



Manor Way, Deeping St. James Peterborough
£230,000 **Freehold**

**Sharman
Quinney**

Key Features



- Well Presented Home
- Kitchen, Lounge and Conservatory
- Two Double Bedrooms
- Spacious Enclosed Gardens
- Garage and Car Port

Accommodation Includes

Entrance Hall

Airing cupboard, further storage cupboard, doors to:

Lounge

5.4m x 3.3m (17'8" x 10'10"). A spacious and bright room with sliding doors leading to:

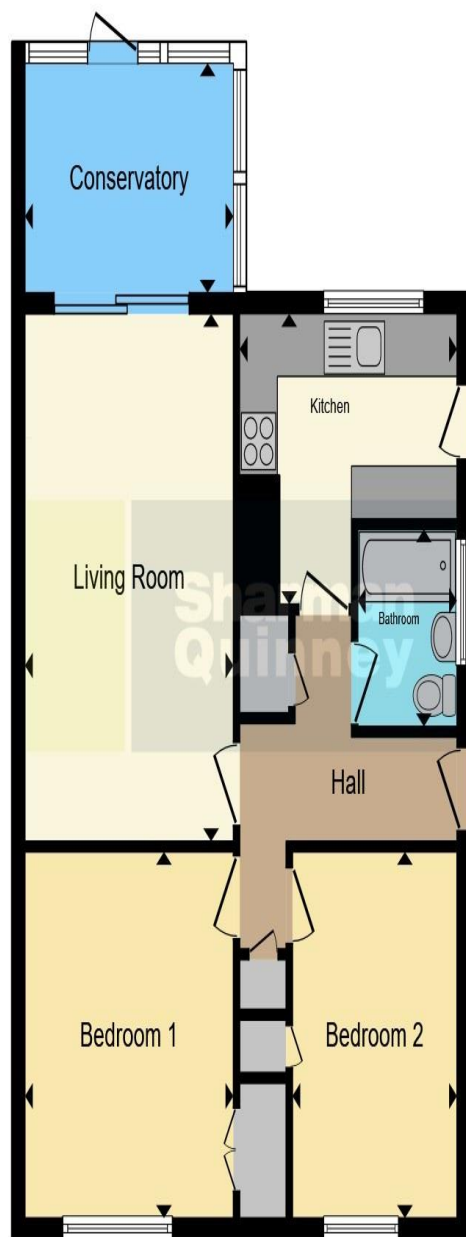
Conservatory

3.3m x 2.2m (10'10" x 7'2"). Door opening on to garden.

Kitchen

3.24m x 3.13m max (10'7" x 10'3" max). Fitted with base and eye level units, space for fridge and freezer, space for cooker, plumbing for washing machine, window to rear, door to side.





Bedroom One
3.4m x 3.3m (11'2" x 10'10"). Window to front, built in double wardrobe.

Bedroom Two
3.4m x 2.5m (11'2" x 8'2"). Window to front, built in storage cupboard.

Bathroom
Fitted with a three piece suite comprising panelled bath, pedestal wash hand basin, WC, window to side.

Outside
To the front of the property is a low maintenance gravelled garden with a driveway to the side providing ample off road parking leading to a car port and the garage beyond.

The rear good sized rear garden enjoys a high level of privacy with mature trees to the rear including a stunning eucalyptus tree, a paved patio seating area and lawns.

Garage
Single garage with up and over door, power and lighting connected.

To view this property call Sharman Quinney on:
01778 343322

Selling your property?

Contact us to arrange a **FREE** home valuation.

 01778 343322

 25 Market Place, Market Deeping,
PETERBOROUGH, Cambridgeshire, PE6 8EA

 marketdeeping@sharmanquinney.co.uk

 www.sharmanquinney.co.uk



 SCAN ME



Sharman Quinney Holdings Limited is registered in England and Wales under company number 4174227, Registered Office is Cumbria House, 16-20 Hockliffe Street, Leighton Buzzard, Bedfordshire, LU7 1GN. VAT Registration Number is 500 2481 05.

1: These particulars do not constitute part or all of an offer or contract. 2: The measurements indicated are supplied for guidance only and as such must be considered incorrect. 3: Potential buyers are advised to recheck the measurements before committing to any expense. 4: Sharman Quinney has not tested any apparatus, equipment, fixtures, fittings or services and it is the buyers interests to check the working condition of any appliances. 5: Sharman Quinney has not sought to verify the legal title of the property and buyers must obtain verification from their legal representative. 6: Intending purchasers will be asked to produce identification documentation at a later stage and we would ask your co-operation in order that there will be no delay in agreeing the sale. Ref: MRD203927 - 0003