



Chapel Avenue, Wisbech St. Mary Wisbech
OIEO £180,000 Freehold

**Sharman
Quinney**

Key Features



- Two Double Bedroom
- Quiet Cul De Sac Location
- Off Road Parking
- Enclosed Rear Garden
- Close to Village Amenities

Lounge - 4.42m x 4.03m (14'5" x 13'2")

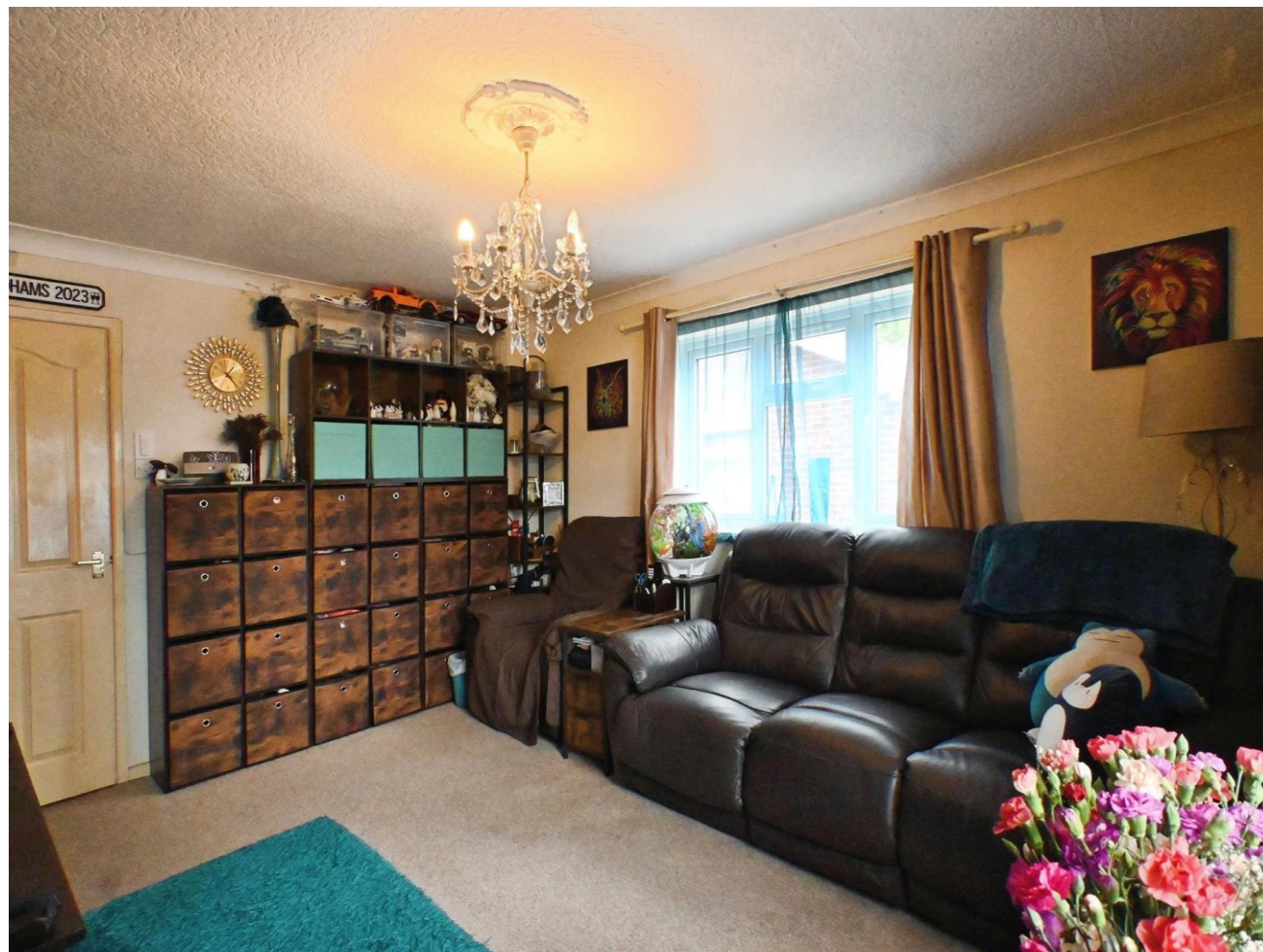
Kitchen - 4.53m x 2.74m (14'8" x 8'9") built in larder

Office/Dining Room - 3.65m x 2.05m (11'9" x 6'7")

Bedroom 1 - 4.24m x 3.46m (13'9" x 11'3") Built in wardrobe

Bedroom 2 - 3.53m x 3.26m (11'9" x 6'7")

Shower Room - 3.47m x 1.57m (11'3" x 5'1")







This floor plan is for illustrative purposes only. It is not drawn to scale. Any measurements, floor areas (including any total floor area), openings and orientation are approximate. No details are guaranteed, they cannot be relied upon for any purpose and they do not form part of any agreement. No liability is taken for any error, omission or misstatement. A party must rely upon its own inspection(s). Powered by www.focalagent.com

To view this property call Sharman Quinney on:
01354 661166

Selling your property?

Contact us to arrange a **FREE** home valuation.

 01354 661166

 8 Broad Street, MARCH, Cambridgeshire, PE15 8TG

 march@sharmanquinney.co.uk

 www.sharmanquinney.co.uk



 SCAN ME



Sharman Quinney Holdings Limited is registered in England and Wales under company number 4174227, Registered Office is Cumbria House, 16-20 Hockliffe Street, Leighton Buzzard, Bedfordshire, LU7 1GN. VAT Registration Number is 500 2481 05.

1: These particulars do not constitute part or all of an offer or contract. 2: The measurements indicated are supplied for guidance only and as such must be considered incorrect. 3: Potential buyers are advised to recheck the measurements before committing to any expense. 4: Sharman Quinney has not tested any apparatus, equipment, fixtures, fittings or services and it is the buyers interests to check the working condition of any appliances. 5: Sharman Quinney has not sought to verify the legal title of the property and buyers must obtain verification from their legal representative. 6: Intending purchasers will be asked to produce identification documentation at a later stage and we would ask your co-operation in order that there will be no delay in agreeing the sale. Ref: MRC206769 - 0005

