



Hurfords

East View Main Road, Tallington Stamford Freehold: £675,000



# Key Features



- Spacious four-bedroom detached dormer house
- Large driveway with excellent parking and set well back from the road
- Beautiful rear garden with open field views
- Part-converted garage offering storage plus flexible use
- Generous open-plan kitchen/dining space

Tucked back privately from the road behind a generous gravel driveway, this attractive detached dormer house immediately gives the sense of space and privacy. The driveway provides excellent parking and leads to the garage, part-converted to create additional usable space while still retaining practical storage.

On entering the home, the wide hallway sets the tone for the light, spacious layout. To the right, the lounge enjoys a lovely dual aspect and a warm, welcoming feel, centred around a characterful fireplace. It offers an ideal space for family relaxation or entertaining.

The heart of the home is the superb open-plan kitchen and dining area. The kitchen provides extensive worktop and storage space, flowing





seamlessly into the dining area through a large open archway. This creates an inviting, social layout perfect for family life. From here, views and access out to the garden enhance the sense of openness.

A useful utility room sits just off the kitchen, with further access into the garage's converted area, which offers flexible use as storage, workshop, craft space or hobby room. A ground-floor office provides an ideal workspace, and there is also a cloakroom for added convenience.

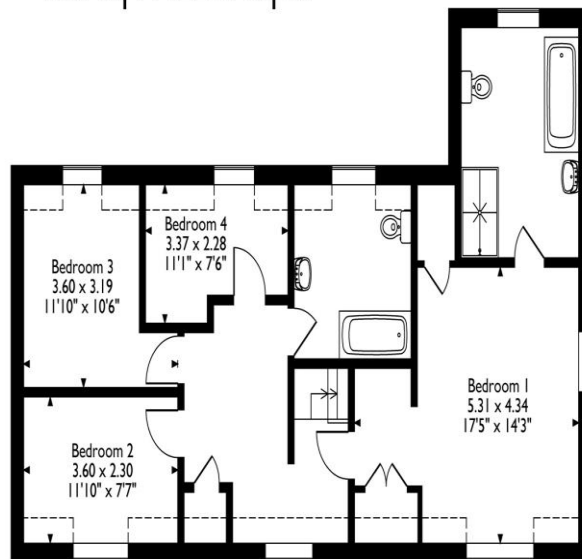
Upstairs, the dormer design provides four generous bedrooms, each benefiting from natural light and charming roof angles. The main bedroom enjoys a particularly spacious layout with pleasant views over the garden. The family bathroom is well-presented, offering both a bath and separate shower.

Outside, the rear garden is a standout feature—expansive, private and backing onto open fields with rural views. It provides excellent space for families, gardening enthusiasts or anyone who enjoys peaceful outdoor living.

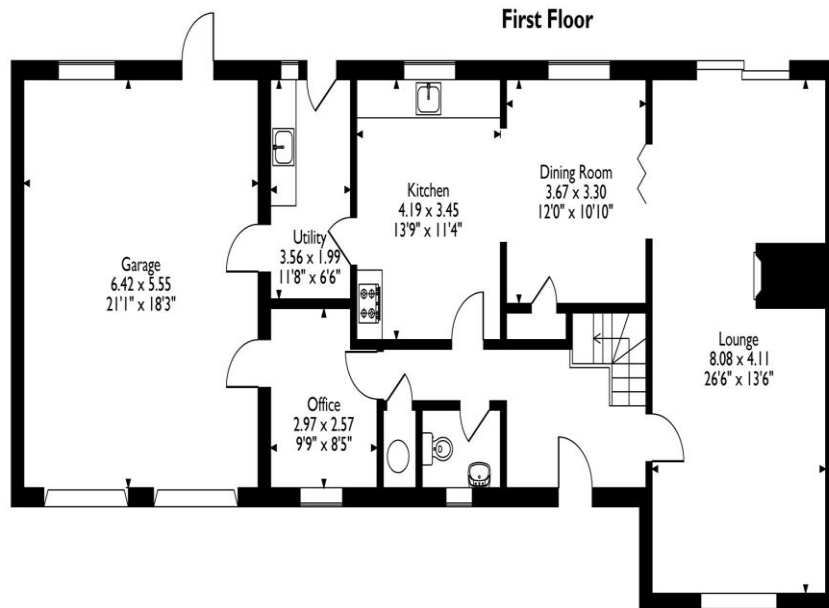
The property sits in the popular village of Tallington, known for its friendly community, convenient access to Stamford, the A1 and local schools. The village also offers lovely



East View, Main Road, Tallington, Stamford, Lincolnshire  
Approximate Gross Internal Area  
210 Sq M / 2261 Sq Ft



First Floor



Ground Floor

Please note that the location of doors, windows and other items are approximate and this floorplan is to be used for illustrative purposes only. Unauthorized reproduction is prohibited.

countryside walks, Tallington Lakes leisure facilities and a local shop, a fantastic setting for family life.



# Selling your property?

Contact us to arrange a FREE home valuation.

 01780 752 136

 38 St. Marys Street, STAMFORD, Lincolnshire, PE9 2DS

 [stamford@hurfords.co.uk](mailto:stamford@hurfords.co.uk)

 [www.hurfords.co.uk](http://www.hurfords.co.uk)



 SCAN ME



Hurfords is a trading name of Sharman Quinney Holdings Limited which is registered in England and Wales under company number 4174227, Registered Office is Cumbria House, 16-20 Hockliffe Street, Leighton Buzzard, Bedfordshire, LU7 1GN. VAT Registration Number is 500 2481 05.

1: These particulars do not constitute part or all of an offer or contract. 2: The measurements indicated are supplied for guidance only and as such must be considered incorrect. 3: Potential buyers are advised to recheck the measurements before committing to any expense. 4: Hurfords has not tested any apparatus, equipment, fixtures, fittings or services and it is the buyers interests to check the working condition of any appliances. 5: Hurfords has not sought to verify the legal title of the property and buyers must obtain verification from their legal representative. 6: Intending purchasers will be asked to produce identification documentation at a later stage and we would ask your co-operation in order that there will be no delay in agreeing the sale. Ref: SFD204325 - 0002

