



Hurford's

Tinwell Road, Stamford Freehold: £550,000

Key Features

3 1 D C

- 3 Bedroom End Terrace Period Property
- Beautifully Presented Throughout
- Character Features
- Landscaped South Facing Enclosed Garden
- Opportunity to Add a Driveway STP

Hurford's welcomes to the market this beautifully presented period home in a prime location on Tinwell Road, Stamford. The property benefits from being an end-of-terrace, offering a generous garden to the rear and side, with the potential to add a driveway, subject to approval.

Upon entering, you're greeted by a spacious hallway leading to the first-floor staircase. To the left, the formal lounge exudes charm with a Victorian-style open fireplace and a large bay window, creating a cosy retreat. Moving toward the rear, the dining room showcases stripped pine flooring, a sash window allowing plenty of natural light, and another elegant period fireplace an ideal space for entertaining.

At the back of the property, the contemporary



kitchen has been tastefully updated with sleek base units, an induction hob, an oven with a warming drawer, and premium integrated appliances. Adjacent to the kitchen, a good-sized utility area provides space for white goods and access to a convenient downstairs WC perfect for entertaining guests.

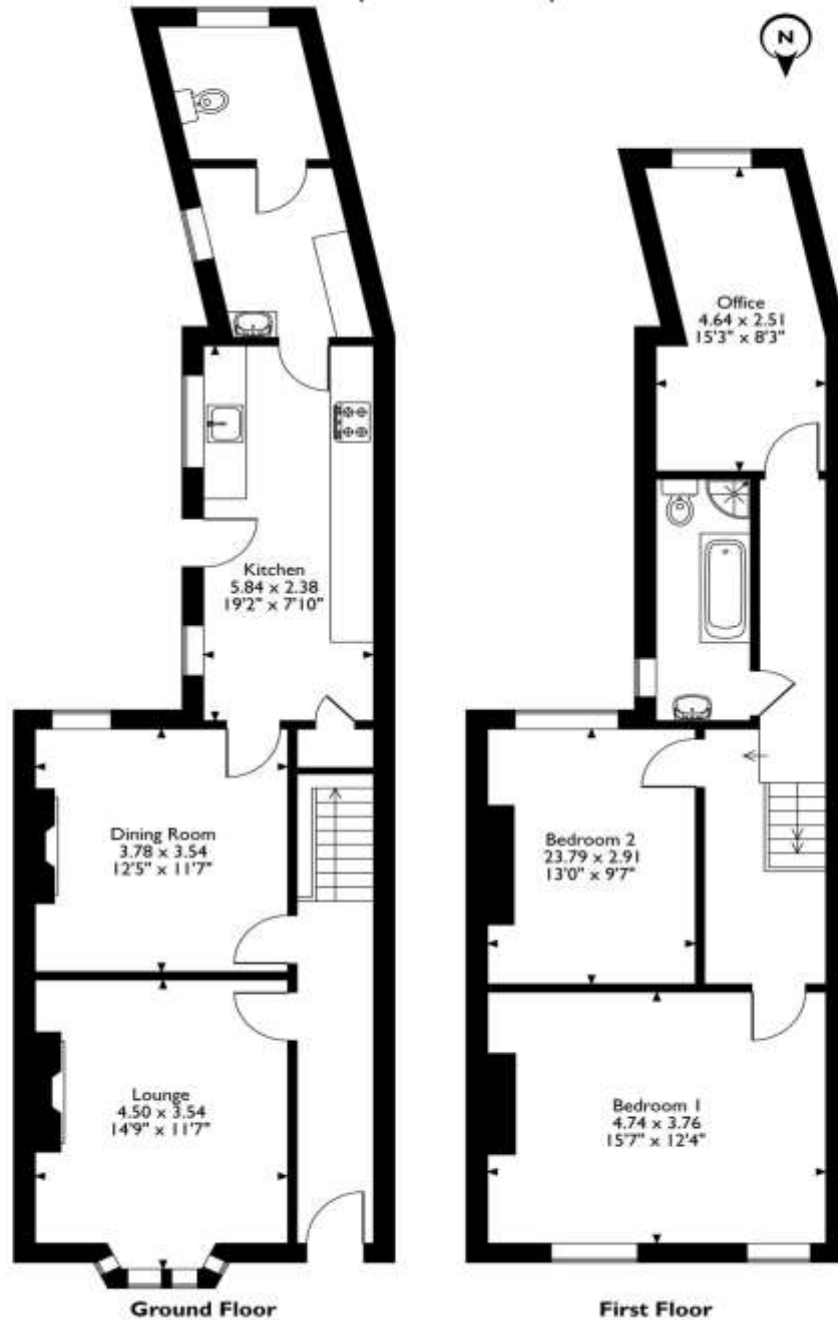
Upstairs, the master bedroom at the front is bright and spacious, with two solid sash windows allowing in ample light. The second bedroom, another well-sized double, sits off the generous landing. Above the kitchen, the recently updated family bathroom is beautifully appointed with a large freestanding bath, a walk-in shower, and a WC. A third bedroom at the rear, currently used as a home office, adds versatility to the home.

The garden has been completely re-landscaped, featuring raised beds with sleepers, a modern paved entertaining area, and a formal lawn. The end-of-terrace position provides valuable side access with a storage shed, while the south-facing orientation ensures sunlight throughout the day without being overlooked.

Overall, this stunning period home is finished to an exceptional standard, blending character with modern updates. A viewing is highly recommended to appreciate its full potential.




25, Tinwell Road, Stamford, Lincolnshire
Approximate Gross Internal Area
120 Sq M/1291 Sq Ft



Please note that the location of doors, windows and other items are approximate and this floorplan is to be used for illustrative purposes only. Unauthorised reproduction is prohibited.

Selling your property?

Contact us to arrange a FREE home valuation.

 01780 752136

 38 St. Marys Street, STAMFORD, Lincolnshire, PE9 2DS

 stamford@hurfords.co.uk

 www.hurfords.co.uk



 SCAN ME



Hurfords is a trading name of Sharman Quinney Holdings Limited which is registered in England and Wales under company number 4174227, Registered Office is Cumbria House, 16-20 Hockliffe Street, Leighton Buzzard, Bedfordshire, LU7 1GN. VAT Registration Number is 500 2481 05.

1: These particulars do not constitute part or all of an offer or contract. 2: The measurements indicated are supplied for guidance only and as such must be considered incorrect. 3: Potential buyers are advised to recheck the measurements before committing to any expense. 4: Hurfords has not tested any apparatus, equipment, fixtures, fittings or services and it is the buyers interests to check the working condition of any appliances. 5: Hurfords has not sought to verify the legal title of the property and buyers must obtain verification from their legal representative. 6: Intending purchasers will be asked to produce identification documentation at a later stage and we would ask your co-operation in order that there will be no delay in agreeing the sale. Ref: SFD204062 - 0001

