



Hereward Place, Stamford Freehold

£675,000

Hurfords

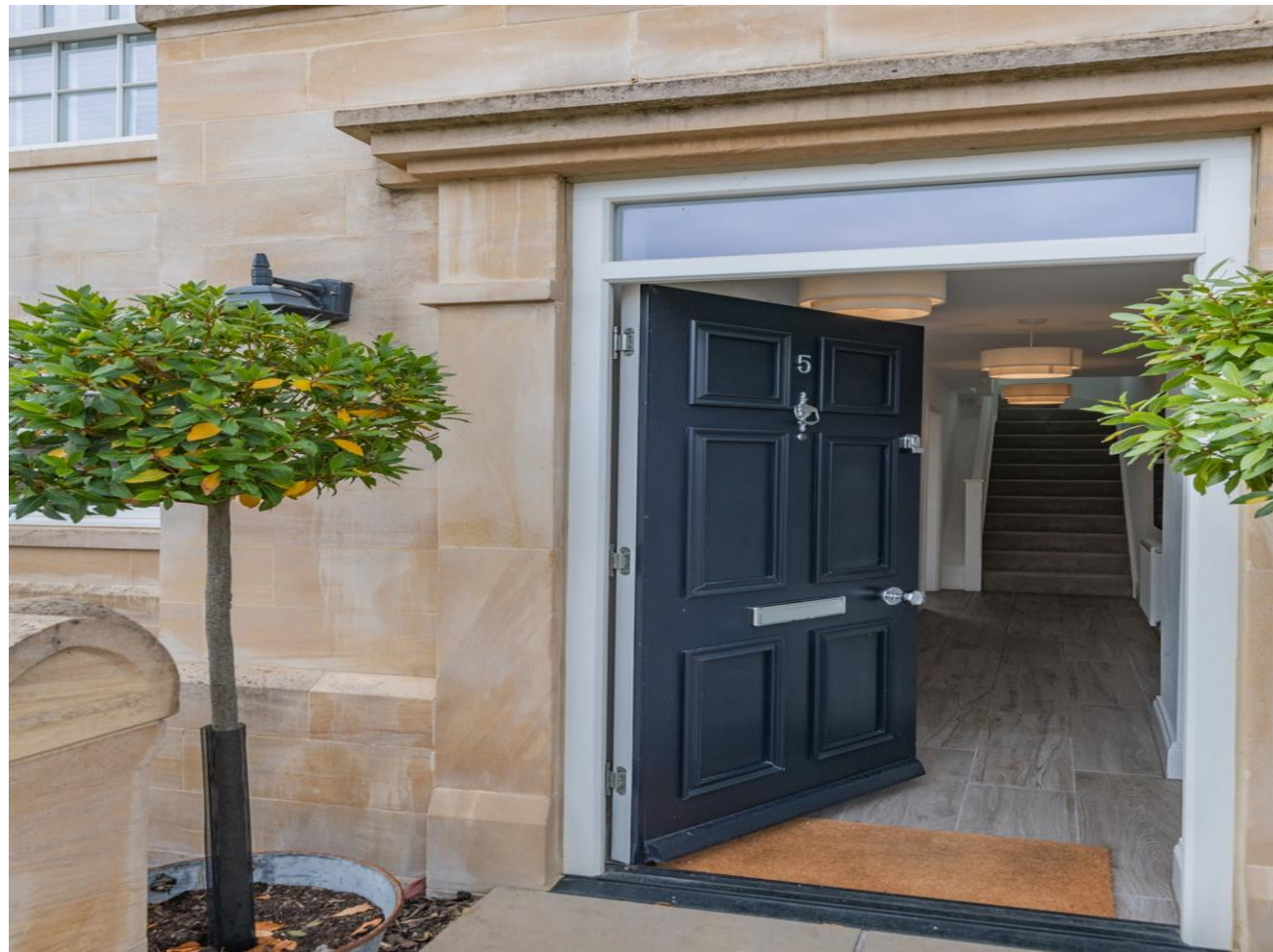
Key Features



- Beautifully Presented 3 Double Bedroom Town House
- Stone Built in 2018
- Premium Development in Stamford
- Enclosed Rear Garden
- Large Single Garage

Introducing this stunning three-story stone townhouse, nestled in the prestigious Cecil Square development. Built by renowned developers Morris Homes in 2018, this beautifully presented property exudes sophistication, tucked away in the heart of this exclusive community.

Step through the front door into a spacious entrance hall with ample storage, setting the tone for the thoughtful design found throughout. To your left, a convenient downstairs WC awaits-perfect for guests-while the hallway leads you into the true heart of the home: an exceptional open-plan kitchen, dining, and snug area. Designed for both style and function, this space features premium appliances, luxurious finishes, and bifold doors that seamlessly open out to a charming, low-



The first floor is equally impressive. A generously sized double bedroom sits alongside a grand lounge that spans the full width of the property. Double doors lead out to a private balcony, creating the perfect space to relax or entertain, while the room itself offers an abundance of space for cozy evenings or social gatherings.

Ascend to the second floor, where two additional bedrooms await, including a lavish master suite complete with its own en-suite shower room. A stylish family bathroom and a well-placed airing cupboard add further convenience to this top floor.

Outside, the rear garden offers a beautifully paved area, perfect for summer barbecues or unwinding with a glass of wine. The property also boasts a large single garage for extra storage or parking.

Positioned in an enviable location, this townhouse is perfect for commuters with easy access to the A1 and a short walk to Stamford train station. You're also just a stone's throw away from the charming Stamford Meadows, the town centre, and the renowned Endowed

To view this property call Hurfords on:
01954 710620

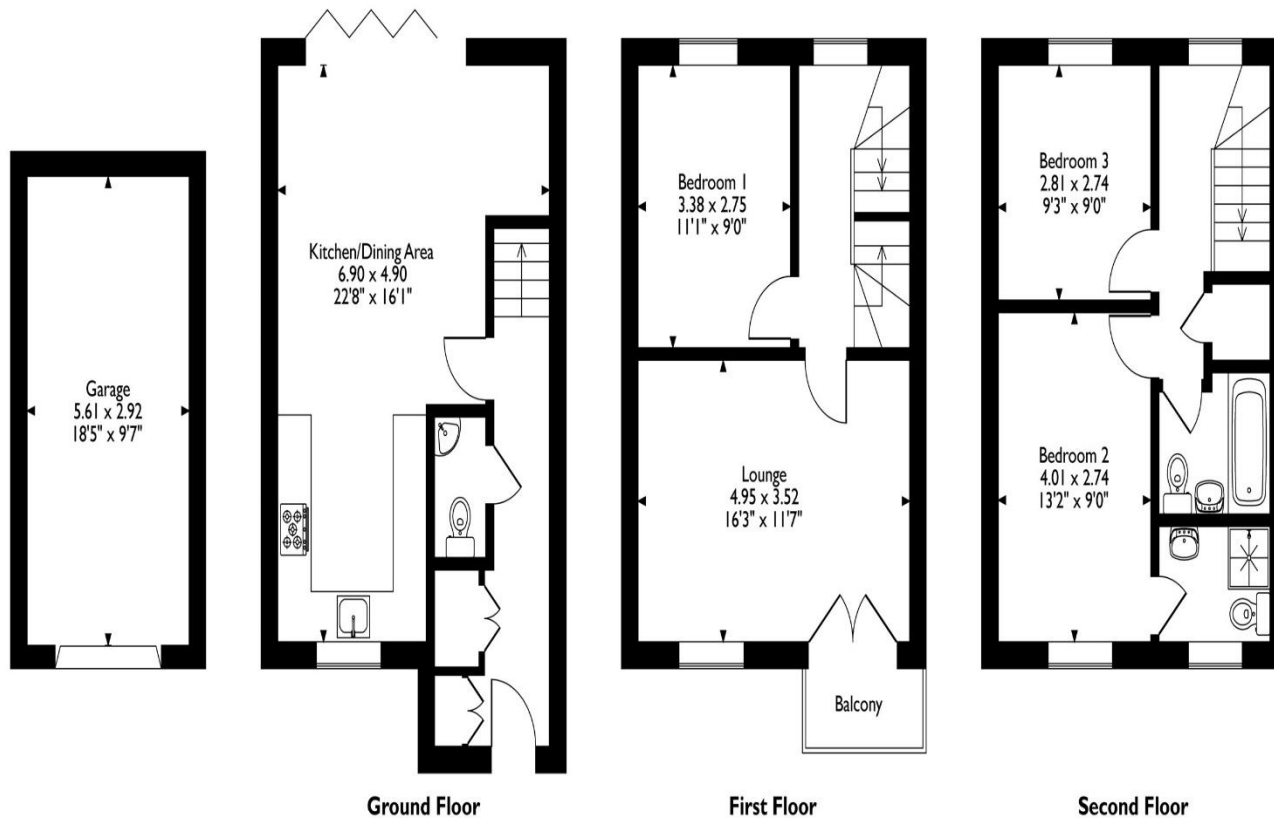


5 Hereward Place, Stamford, Lincolnshire

Approximate Gross Internal Area
Main House = 104 Sq M/1120 Sq Ft

Garage = 16 Sq M/172 Sq Ft

Total = 120 Sq M/1292 Sq Ft




Please note that the location of doors, windows and other items are approximate and this floorplan is to be used for illustrative purposes only. Unauthorized reproduction is prohibited.

Schools. This property truly offers the best of modern living, in a setting that combines elegance and practicality.

Selling your property?

Contact us to arrange a FREE home valuation.

 01780 752136

 38 St. Marys Street, STAMFORD, Lincolnshire, PE9 2DS

 stamford@hurfords.co.uk

 www.hurfords.co.uk



 SCAN ME



Hurfords is a trading name of Sharman Quinney Holdings Limited which is registered in England and Wales under company number 4174227, Registered Office is Cumbria House, 16-20 Hockliffe Street, Leighton Buzzard, Bedfordshire, LU7 1GN. VAT Registration Number is 500 2481 05.

1: These particulars do not constitute part or all of an offer or contract. 2: The measurements indicated are supplied for guidance only and as such must be considered incorrect. 3: Potential buyers are advised to recheck the measurements before committing to any expense. 4: Hurfords has not tested any apparatus, equipment, fixtures, fittings or services and it is the buyers interests to check the working condition of any appliances. 5: Hurfords has not sought to verify the legal title of the property and buyers must obtain verification from their legal representative. 6: Intending purchasers will be asked to produce identification documentation at a later stage and we would ask your co-operation in order that there will be no delay in agreeing the sale. Ref: SFD204000 - 0007

