

Tolethorpe Square, PE9 1LD
Stamford
Lincolnshire
£230,000

Hurfords



2



1



D



A

- Well Presented 2 Bedroom Home
- End Terrace
- Kitchen/Diner
- Beautifully Presented Garden
- Side Access
- Quiet Cul-de-Sac Location
- Great FTB/Investment Home

20 Tolethorpe Square Stamford Lincolnshire PE9 1LD

Positioned in a quiet cul-de-sac location easily accessible to Stamford town centre is this well-presented 2-bedroom home. The ground floor is comprising of a formal lounge, a great room with plenty of space for furniture and a large window bringing in bags of light to the room. Moving through you enter the kitchen/dining room to the rear. The kitchen offers a range of base and wall units painted in a tasteful colour providing plenty of storage. There is space for a large range cooker, fridge freezer and washing machine. Our current vendors comfortably have a table with 4 chairs in the dining space, a great spot for when entertaining. Additionally, there is a cupboard under the stairs providing storage and a door accessing the side of the home for the front and the garden.

Moving upstairs there are 2 good sized bedrooms. The master bedroom is a great sized double to the front and benefits from fitted wardrobe space. Bedroom 2 is currently utilised as a home office with a pull-out double bed and is still a good-sized bedroom. These two bedrooms share the family bathroom which has been tastefully decorated and features a bath with shower over, vanity unit, W/C and heated towel rail.

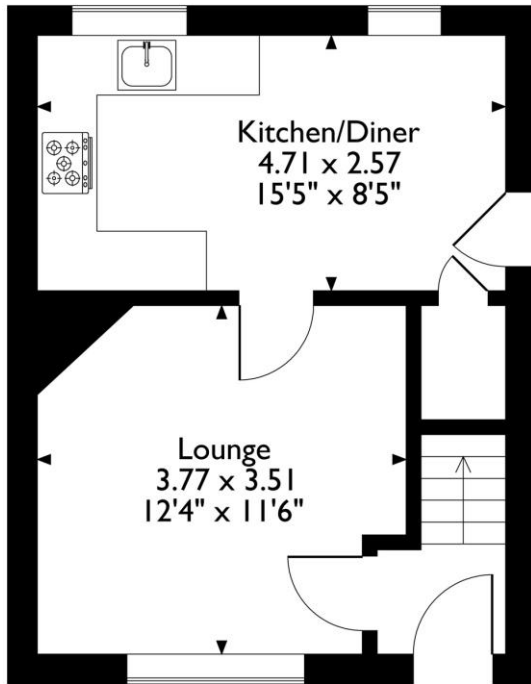
Externally to the front is a low maintenance garden with a picket fence with access to the side of the property. To the rear is a beautifully presented enclosed garden updated with a paved area for outdoor dining leading to a decked area to the end of the garden to catch the evening sun on a raised decked area and access to a shed. The garden features plenty of lawn and a raised bed to break the garden up with mature plants.

This home is ready to move in to and a fabulous First-Time Buyer opportunity or investment home and simply must be viewed!

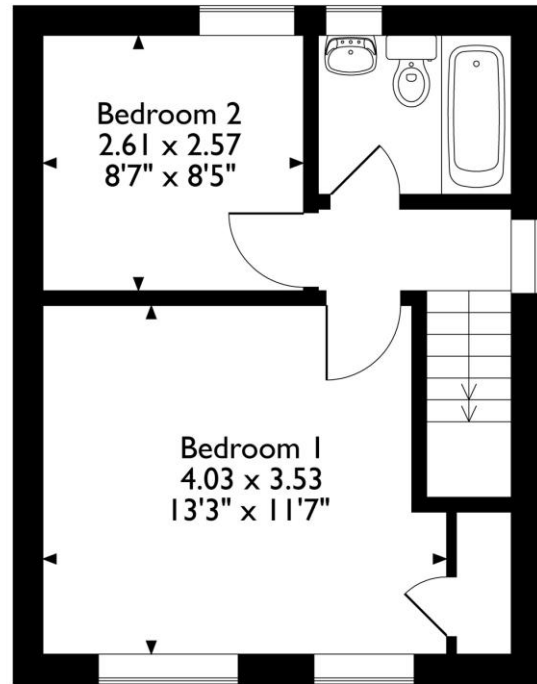


Hurfords

20 Tolethorpe Square, Stamford, Lincolnshire
Approximate Gross Internal Area
58 Sq M/627 Sq Ft



Ground Floor



First Floor

Please note that the location of doors, windows and other items are approximate and this floorplan is to be used for illustrative purposes only. Unauthorized reproduction is prohibited.



Rooms/Measurements

Lounge 12'4" x 11'6"
Kitchen/Diner 15'5" x 8'5"
Bedroom One 13'3" x 11'7"
Bedroom Two 8'7" x 8'5"

TENURE: FREEHOLD



Hurfords



SCAN ME

Selling your property?
Contact us to arrange a FREE home valuation.

01780 752136

38 St. Mary's Street, Stamford, Lincolnshire, PE9 2DS

stamford@hurfords.co.uk

www.hurfords.co.uk

Hurfords is a trading name of Sharman Quinney Holdings Limited which is registered in England and Wales under company number 4174227, Registered Office is Cumbria House, 16-20 Hockliffe Street, Leighton Buzzard, Bedfordshire, LU7 1GN. VAT Registration Number is 500 2481 05. 1: These particulars do not constitute part or all of an offer or contract. 2: The measurements indicated are supplied for guidance only and as such must be considered incorrect. 3: Potential buyers are advised to recheck the measurements before committing to any expense. 4: Hurfords has not tested any apparatus, equipment, fixtures, fittings or services and it is the buyer's interests to check the working condition of any appliances. 5: Hurfords has not sought to verify the legal title of the property and buyers must obtain verification from their legal representative. 6: Intending purchasers will be asked to produce identification documentation at a later stage and we would ask your co-operation in order that there will be no delay in agreeing the sale. Ref: SFD203926 PDAF 0001

