



Bridle Cottage Main Street, Southorpe Stamford Freehold £700,000

Key Features



- Beautifully Presented 3 Bedroom Stone Barn Conversion
- Modernised Throughout to a Premium Standard
- Character Features Throughout
- Planning Permission Granted to Extend
- Home Office Space

Upon entering, a spacious porch welcomes you with its stone flooring, leading seamlessly into the reception areas. Directly ahead lies a sizeable boot room for coats and shoes, alongside a convenient downstairs W/C and a well-appointed laundry cupboard beneath the staircase, perfect for housing white goods. To the left, the formal lounge exudes character with exposed beams, complemented by contemporary neutral lighting and decor. An external door provides access to the garden, ideal for summer relaxation. On the right, the kitchen captivates with its stunning design, boasting premium appliances including integrated Neff Ovens, an Induction Hob, Integrated Fridge & Freezer, Dishwasher, and a stylish wine fridge. The kitchen's brushed gold accents and quartz worktops enhance its allure, creating an exceptional space for entertaining. Bi-fold doors



seamlessly merge indoor and outdoor dining experiences during warmer months. The dining room, elevated on a split level, features exposed brickwork and ample space for multiple diners, along with additional storage. Adjacent is the study, which doubles as a guest bedroom, complete with its own en-suite shower room and a captivating mezzanine floor, showcasing the home's history.

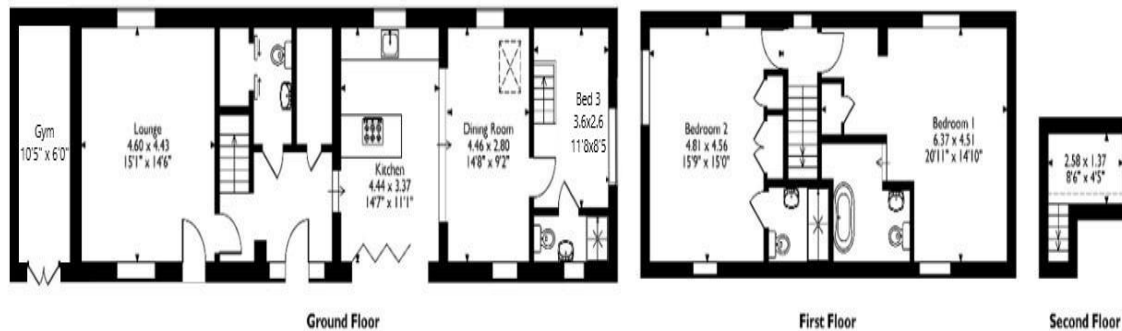
Ascending to the first floor, the barn's charm continues to unfold. Both bedrooms boast vaulted ceilings, accentuating the building's heritage with exposed timber beams. Bedroom 2, currently utilised as a children's room, offers ample storage and a luxurious en-suite shower room with floor-to-ceiling tiles and an exposed stone wall. Bedroom 1, the master suite, impresses with its spacious layout and a large truss highlighting the room's history. This opulent room features an open-plan en-suite bathroom, cleverly divided with different lighting and height zones, showcasing a roll-top bath, basin, and W/C. Externally, a timber-clad indoor room, accessible via double doors, serves as a gym but offers versatility as a games room or office space.

The property benefits from full planning permission to extend the ground floor, enhancing its appeal further. The fully enclosed garden

To view this property call Hurfords on:
01954 710620



Bridle Cottage, Main Street, Southorpe, Stamford, Lincolnshire
Approximate Gross Internal Area
138 Sq M/1485 Sq Ft



Please note that the location of doors, windows and other items are approximate and this floorplan is to be used for illustrative purposes only. Unauthorized reproduction is prohibited.

provides a safe haven for families, with mature beds, a lawn area, and a paved space for alfresco dining and relaxation. The rear garden offers privacy and tranquility, creating an idyllic countryside retreat. A gravel drive at the front provides ample off-road parking.

A viewing of this exceptional property is essential to fully appreciate its quality craftsmanship and inviting ambiance, presenting a turnkey opportunity for buyers.

Selling your property?

Contact us to arrange a FREE home valuation.

 01780 752136

 38 St. Marys Street, STAMFORD, Lincolnshire, PE9 2DS

 stamford@hurfords.co.uk

 www.hurfords.co.uk



 SCAN ME



Hurfords is a trading name of Sharman Quinney Holdings Limited which is registered in England and Wales under company number 4174227, Registered Office is Cumbria House, 16-20 Hockliffe Street, Leighton Buzzard, Bedfordshire, LU7 1GN. VAT Registration Number is 500 2481 05.

1: These particulars do not constitute part or all of an offer or contract. 2: The measurements indicated are supplied for guidance only and as such must be considered incorrect. 3: Potential buyers are advised to recheck the measurements before committing to any expense. 4: Hurfords has not tested any apparatus, equipment, fixtures, fittings or services and it is the buyers interests to check the working condition of any appliances. 5: Hurfords has not sought to verify the legal title of the property and buyers must obtain verification from their legal representative. 6: Intending purchasers will be asked to produce identification documentation at a later stage and we would ask your co-operation in order that there will be no delay in agreeing the sale. Ref: SFD203622 - 003

