



Broadstone Drive, Hampton Water Peterborough
£265,000 Freehold

**Sharman
Quinney**

Key Features



- Semi-Detached House
- 3 Bedrooms
- Kitchen/Diner
- Driveway
- Close to Local Amenities

As you step inside, you'll be greeted by the warm and welcoming hallway leading you through to the heart of the home and downstairs cloakroom.

The lovely lounge offers the perfect space for the family to relax and unwind in together after a long day's work, adjacent is the light and airy kitchen/dining room which is a real showstopper ,featuring sleek countertops and top of the line integrated appliances, ideal for the whole family to enjoy their evening meals together or simply to enjoy a quick snack ,this kitchen has you covered.

As we step upstairs, you'll find the three well-proportioned bedrooms, bedroom 1 offers a peaceful retreat and boasts built in wardrobes, the additional bedrooms are ideal for the children,



guests or home office, depending on your needs, family bathroom.

Outside is the real highlight of the property the generous rear garden, perfect for the family to enjoy the outdoor space, imagine hosting family bar be cues, gardening to your hearts content or simply enjoying the fresh air in your own private oasis.

Parking, no problem, the driveway to the side provides ample off-road parking for two cars.

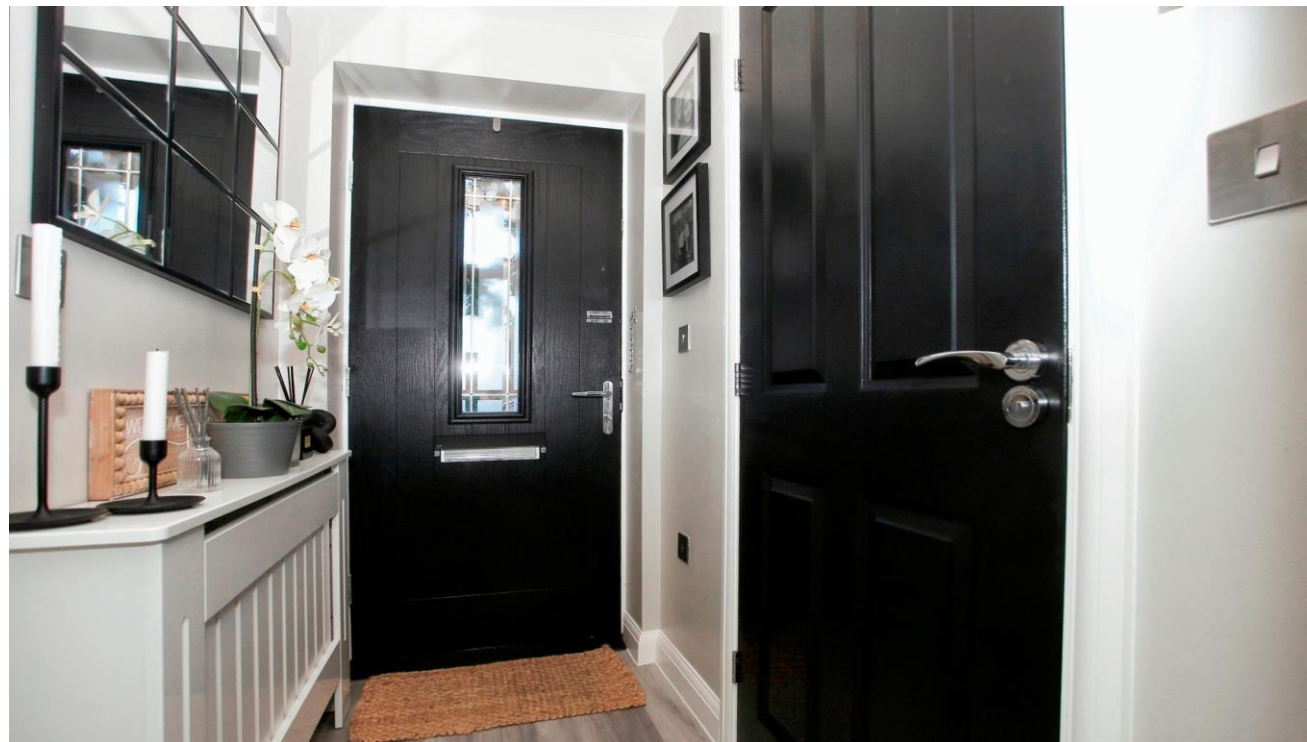
Broadstone Drive is a popular family friendly neighbourhood within easy reach of shops, schools, lake land walks and the all-important transport links.

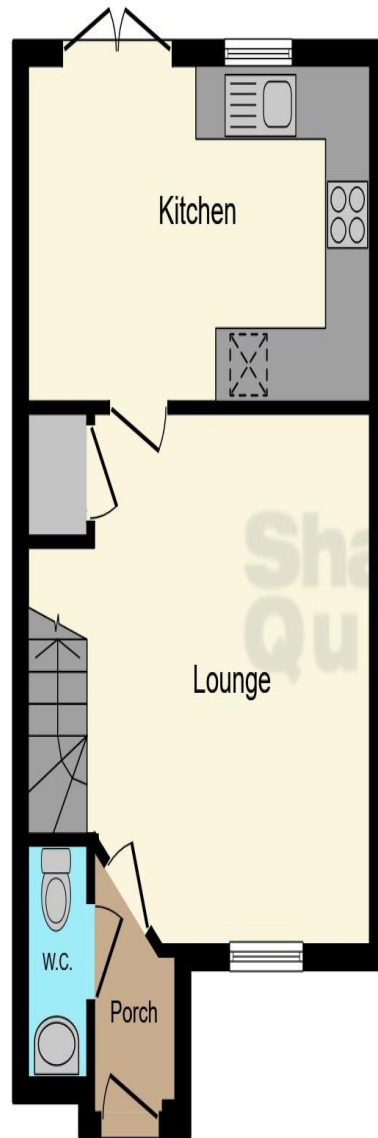
Entrance Hall
7ft max x 3.5" max (irregular shaped room)

Downstairs cloakroom
6.3' max x 2.7" max

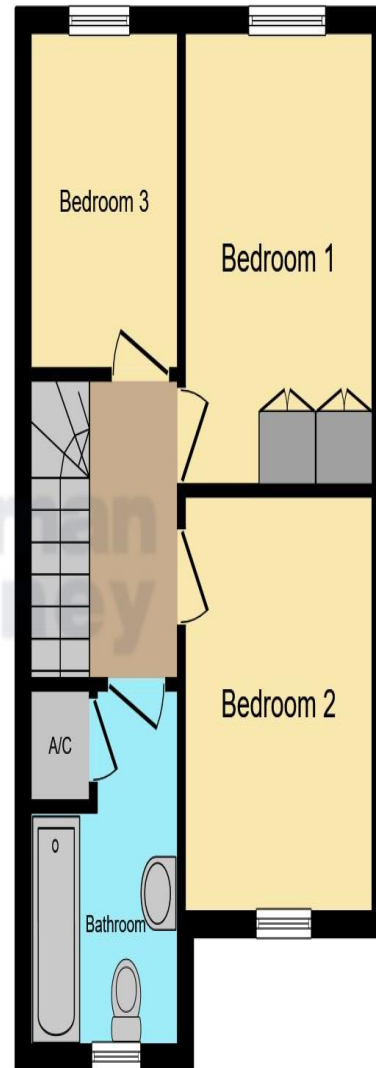
Lounge
14.9' max x 14.4" max (including stairs)

Kitchen/Diner
14.9' x 8.8"





Ground Floor



First Floor

First floor landing
8.3' max x 6.5" max

Bedroom 1
12.1' max x 8.1" max (inc wardrobes)

Bedroom 2
11.2' x 8.1"

Bedroom 3
8.9' x 6.6"

Family Bathroom

This floor plan is for illustrative purposes only. It is not drawn to scale. Any measurements, floor areas (including any total floor area), openings and orientation are approximate. No details are guaranteed, they cannot be relied upon for any purpose and they do not form part of any agreement. No liability is taken for any error, omission or misstatement. A party must rely upon its own inspection(s). Powered by www.focalagent.com

To view this property call Sharman Quinney on:
01733 245400

Selling your property?

Contact us to arrange a **FREE** home valuation.

 01733 245400

 Unit 19 Maltings Square, Broadway Shopping Centre, Yaxley, PE7 3EW

 yaxley@sharmanquinney.co.uk

 www.sharmanquinney.co.uk



 SCAN ME



Sharman Quinney Holdings Limited is registered in England and Wales under company number 4174227, Registered Office is Cumbria House, 16-20 Hockliffe Street, Leighton Buzzard, Bedfordshire, LU7 1GN. VAT Registration Number is 500 2481 05.

1: These particulars do not constitute part or all of an offer or contract. 2: The measurements indicated are supplied for guidance only and as such must be considered incorrect. 3: Potential buyers are advised to recheck the measurements before committing to any expense. 4: Sharman Quinney has not tested any apparatus, equipment, fixtures, fittings or services and it is the buyers interests to check the working condition of any appliances. 5: Sharman Quinney has not sought to verify the legal title of the property and buyers must obtain verification from their legal representative. 6: Intending purchasers will be asked to produce identification documentation at a later stage and we would ask your co-operation in order that there will be no delay in agreeing the sale. Ref: YAX203822 - 0001

