



Andrewes Close, Farcet Peterborough
£280,000 Freehold

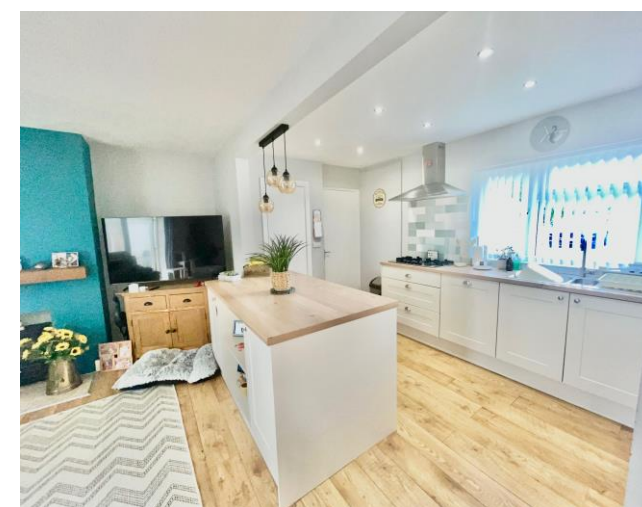
**Sharman
Quinney**

Key Features



- Established End Terraced Bungalow
- Three Bedrooms + En-Suite Shower Room
- Open Plan lounge/Dining & Kitchen Area
- Conservatory + utility Room
- Refitted Family Bathroom

Located in a Quiet Cul-De-Sac in the Village of Farcet which is in walking distance to the Crown Lakes Country Park. In brief the accommodation comprises of Entrance Hall with doors to, Bedrooms Two and Three, the Refitted Three Piece Family Bathroom, Open Plan Lounge/Dining and Kitchen, the Refitted Kitchen Area has a range of base and eye level units, cupboards and drawers, worktop space, stainless steel single unit, built-in dishwasher, double oven, microwave, wine cooler, fridge / freezer, door to the Inner Way which has double glazed sliding doors to the front, door to the Utility/ Storage Room which has plumbing for a washing machine. Lounge/Dining Area has a door to bedroom one and double glazed double doors open out into the Conservatory with double glazed windows and French doors to the rear garden, Bedroom One



benefits from having French doors opening out to the rear garden, door to the Three Piece En-Suite Shower Room, Outside frontage is open plan, set back from the main road which provides on street parking, Side gated access to the Enclosed Rear Garden, which is laid mainly to lawn with a paved patio seating area, it also benefits from having a Garden Office which would be ideal if you work from home, it has power, lighting and heating, double glazed door and windows, garden also has a brick built storage shed with power and lighting.

Entrance Hall - 8'6" x 4'8"

Open Plan Lounge/Dining & Kitchen:

Lounge/Dining Area - 16'6"max 12'8"max

(including chimney breast)

Conservatory - 19'2" x 9'7"

Bedroom 1 - 12'9" x 10'4"

En-Suite Shower Room - 5'8"max x 3'9"max
(excluding shower cubicle)

Bedroom 2 - 13'1" x 9'2"

Bedroom 3 - 10'8" x 6'9"

Family Bathroom - 8'8" x 6'6"

Inner Hallway - 5'1" 3'6"

Utility Room - 6'8" x 3'1"

Garden Office - 17'6" x 9'9"

Brick Storage shed - 10'7" x 5'5"



To view this property call Sharman Quinney on:
01733 245400

Selling your property?

Contact us to arrange a **FREE** home valuation.

 01733 245400

 Unit 19 Maltings Square, Broadway Shopping Centre, Yaxley, PE7 3EW

 yaxley@sharmanquinney.co.uk

 www.sharmanquinney.co.uk



 SCAN ME



Sharman Quinney Holdings Limited is registered in England and Wales under company number 4174227, Registered Office is Cumbria House, 16-20 Hockliffe Street, Leighton Buzzard, Bedfordshire, LU7 1GN. VAT Registration Number is 500 2481 05.

1: These particulars do not constitute part or all of an offer or contract. 2: The measurements indicated are supplied for guidance only and as such must be considered incorrect. 3: Potential buyers are advised to recheck the measurements before committing to any expense. 4: Sharman Quinney has not tested any apparatus, equipment, fixtures, fittings or services and it is the buyers interests to check the working condition of any appliances. 5: Sharman Quinney has not sought to verify the legal title of the property and buyers must obtain verification from their legal representative. 6: Intending purchasers will be asked to produce identification documentation at a later stage and we would ask your co-operation in order that there will be no delay in agreeing the sale. Ref: YAX203769 - 0001

