



Sheepwalk, Paston Peterborough
Offers In Excess Of £180,000 Freehold

**Sharman
Quinney**

Key Features



- Garage
- Enclosed Rear Garden
- Downstairs Cloakroom
- Solar Panels
- Lounge Diner
- Three Bedrooms

Cloakroom

Fitted with a two piece suite comprising a wash hand basin with mixer tap and a WC, radiator, frosted UPVC double glazed window to the front.

Kitchen 3.96m x 2.49m (13' x 8'2")

Fitted with a matching range of base and eye level units, worktop space over, sink with mixer tap and tiled splashbacks, built in oven and four ring gas hob extractor hood over, plumbing for washing machine and dishwasher, space for a fridge freezer, ceramic tiled flooring, UPVC double glazed window to the front.

Walk In Storage Cupboard 4.06m x 0.91m (13'4" x 3')

Lounge 6.02m maximum x 3.53m (19'9"



maximum x 11'7")

Stairs, office space with desk and shelving, two radiators, UPVC double glazed window to rear, UPVC double glazed door leading out to rear garden.

First Floor Landing

Two built in storage cupboards, loft access, doors to:

Bedroom One 3.63 x 3.27 (11'11" x 10'7" maximum)

Radiator, fitted wardrobes, UPVC double glazed window to the rear.

Bedroom Two 3.07 x 3.20 (10'1" x 10'4")

Radiator, fitted wardrobes, UPVC double glazed window to the front.

Bedroom Three 2.79m x 2.64m (9'2" x 8'8")

Radiator, UPVC double glazed window to the rear.

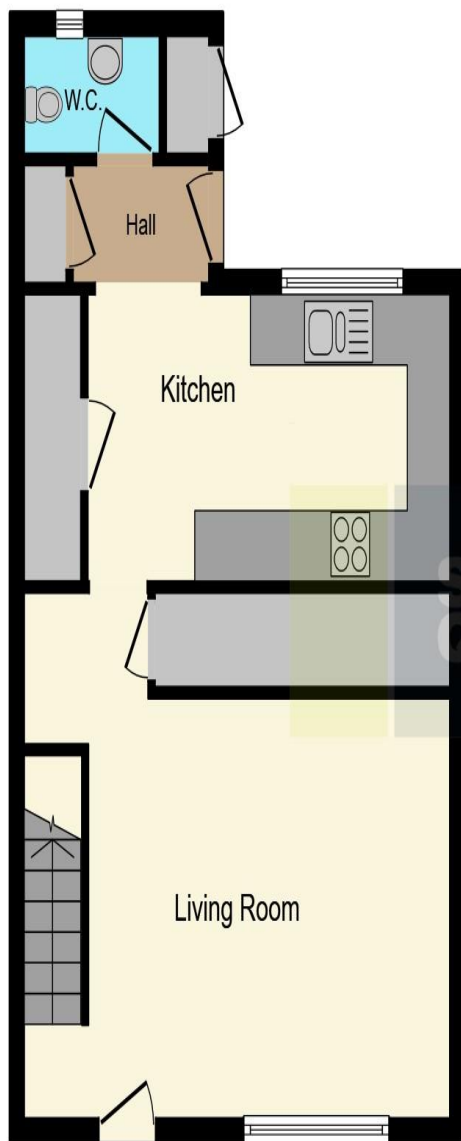
Bathroom

Fitted with a three piece suite comprising bath with mixer tap, shower attachment and shower rail, wash hand basin with mixer tap and a WC, Radiator, UPVC double glazed window to the front.

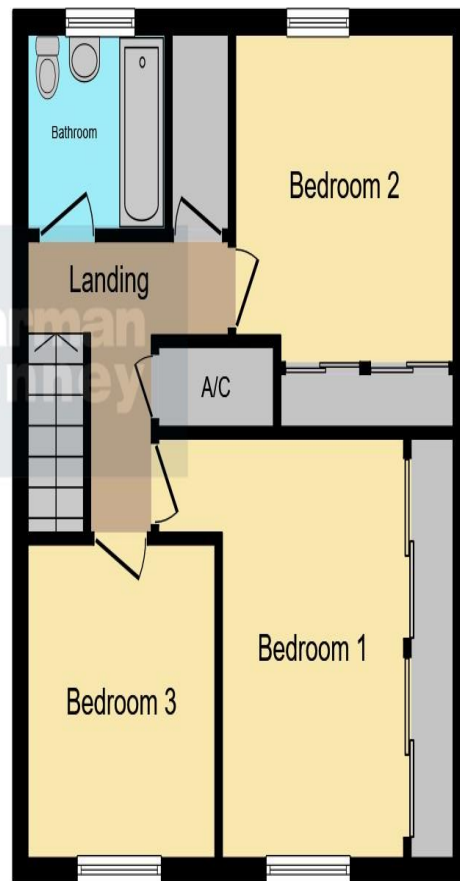
Outside

The rear garden is enclosed and mainly laid to lawn, paved patio areas. Garage with metal up and over door.





Ground Floor



First Floor


This floor plan is for illustrative purposes only. It is not drawn to scale. Any measurements, floor areas (including any total floor area), openings and orientation are approximate. No details are guaranteed, they cannot be relied upon for any purpose and they do not form part of any agreement. No liability is taken for any error, omission or misstatement. A party must rely upon its own inspection(s). Powered by www.focalagent.com

To view this property call Sharman Quinney on:
01733 575757

Selling your property?

Contact us to arrange a **FREE** home valuation.

 01733 575757

 Loxley Centre, Werrington, Peterborough, Cambridgeshire, PE4 5BW

 werrington@sharmanquinney.co.uk

 www.sharmanquinney.co.uk



 SCAN ME



Sharman Quinney Holdings Limited is registered in England and Wales under company number 4174227, Registered Office is Cumbria House, 16-20 Hockliffe Street, Leighton Buzzard, Bedfordshire, LU7 1GN. VAT Registration Number is 500 2481 05.

1: These particulars do not constitute part or all of an offer or contract. 2: The measurements indicated are supplied for guidance only and as such must be considered incorrect. 3: Potential buyers are advised to recheck the measurements before committing to any expense. 4: Sharman Quinney has not tested any apparatus, equipment, fixtures, fittings or services and it is the buyers interests to check the working condition of any appliances. 5: Sharman Quinney has not sought to verify the legal title of the property and buyers must obtain verification from their legal representative. 6: Intending purchasers will be asked to produce identification documentation at a later stage and we would ask your co-operation in order that there will be no delay in agreeing the sale. Ref: WER205197 - 0005

