



Mead Close, Peterborough  
**£280,000 Freehold**

**Sharman  
Quinney**



# Key Features



- Three Bedrooms
- Re-Fitted Kitchen
- Sun Room
- Outside Gym
- Off Road Parking

## GROUND FLOOR

### ENTRANCE HALL

UPVC Double glazed entrance door. Tower radiator. Tiled flooring. Stairs to first floor. Wall mounted boiler under stairs.

LOUNGE: UPVC Double glazed window to front. Radiator. Log burner. Opening to;

KITCHEN/DINER: UPVC Double glazed window to side. Fitted with a range of base and wall units. Sink and drainer. Integrated dishwasher. Cooker. Radiator. UPVC Double glazed doors to rear.

SUN ROOM: UPVC Double glazed French doors to rear. Radiator. Tiled flooring.





#### UTILITY AREA

Space for washing machine. Fitted units.

#### WET ROOM

Low level WC. Shower. Tiled flooring.

#### FIRST FLOOR

##### LANDING

UPVC Double glazed window to side. Loft access.

BEDROOM ONE: UPVC Double glazed window to front. Radiator. Laminate flooring.

BEDROOM TWO: UPVC Double glazed window to rear. Radiator. Built in storage cupboard.

BEDROOM THREE: UPVC Double glazed window to front. Radiator. Parquet flooring.

#### BATHROOM

UPVC Frosted double glazed window to side. Low level WC. Wash hand basin. Bath with mixer taps and shower attachment. Shower cubicle. Tiled walls.

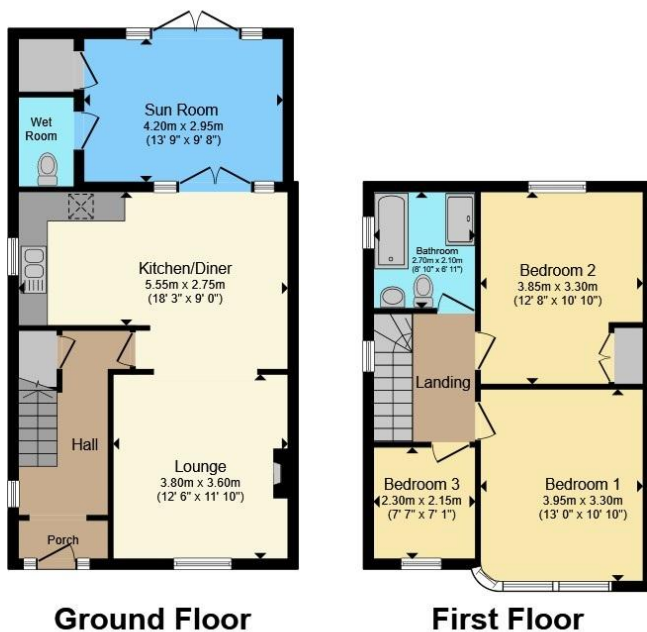
#### OUTSIDE

##### FRONT

Driveway providing off road parking.

##### REAR GARDEN





Enclosed by fencing. Side access gate. Patio area. Laid to lawn with shrub borders. Decorative gravel footpath. Wooden garden shed. Outside bar area. Insulated brick and timber constructed room with power and lighting connected, currently used as a gym.

Total floor area 102.4 m<sup>2</sup> (1,103 sq.ft.) approx

This floor plan is for illustrative purposes only. It is not drawn to scale. Any measurements, floor areas (including any total floor area), openings and orientation are approximate. No details are guaranteed, they cannot be relied upon for any purpose and they do not form part of any agreement. No liability is taken for any error, omission or misstatement. A party must rely upon its own inspection(s). Powered by [www.propertybox.io](http://www.propertybox.io)

Sharman  
Quinney

To view this property call Sharman Quinney on:  
**01733 575757**

# Selling your property?

Contact us to arrange a **FREE** home valuation.

 01733 575757

 Loxley Centre, Werrington, Peterborough,  
Cambridgeshire, PE4 5BW

 [werrington@sharmanquinney.co.uk](mailto:werrington@sharmanquinney.co.uk)

 [www.sharmanquinney.co.uk](http://www.sharmanquinney.co.uk)



 SCAN ME



Sharman Quinney Holdings Limited is registered in England and Wales under company number 4174227, Registered Office is Cumbria House, 16-20 Hockliffe Street, Leighton Buzzard, Bedfordshire, LU7 1GN. VAT Registration Number is 500 2481 05.

1: These particulars do not constitute part or all of an offer or contract. 2: The measurements indicated are supplied for guidance only and as such must be considered incorrect. 3: Potential buyers are advised to recheck the measurements before committing to any expense. 4: Sharman Quinney has not tested any apparatus, equipment, fixtures, fittings or services and it is the buyers interests to check the working condition of any appliances. 5: Sharman Quinney has not sought to verify the legal title of the property and buyers must obtain verification from their legal representative. 6: Intending purchasers will be asked to produce identification documentation at a later stage and we would ask your co-operation in order that there will be no delay in agreeing the sale. Ref: WER205746 - 0001

