



Harris Close, Newborough Peterborough
£220,000 Freehold

**Sharman
Quinney**

Key Features



- Two Double Bedrooms
- Study
- Open Plan Kitchen/lounge
- Garage
- Enclosed Rear Garden

GROUND FLOOR

ENTRANCE HALL: Entrance door. Radiator. Stairs to first floor.

UTILITY/GARAGE: Up and over door to front. Two UPVC Double glazed windows to rear. Double glazed door to rear garden. Fitted base unit. Stainless steel sink and drainer with mixer tap. Radiator. Wall mounted boiler.

FIRST FLOOR

LANDING: UPVC Double glazed window to front. Radiator. Stairs to second floor.

KITCHEN/LOUNGE: UPVC Double glazed window to front and rear. Fitted with a range of base and



wall units. Stainless steel sink and drainer with mixer tap. Built in oven and fitted hob with cooker hood over. Two radiators.

STUDY: UPVC Double glazed window to rear. Radiator.

SECOND FLOOR

LANDING: Loft access.

BEDROOM: Two UPVC Double glazed windows to front. Two radiators.

BEDROOM: Skylight to rear. Radiator.

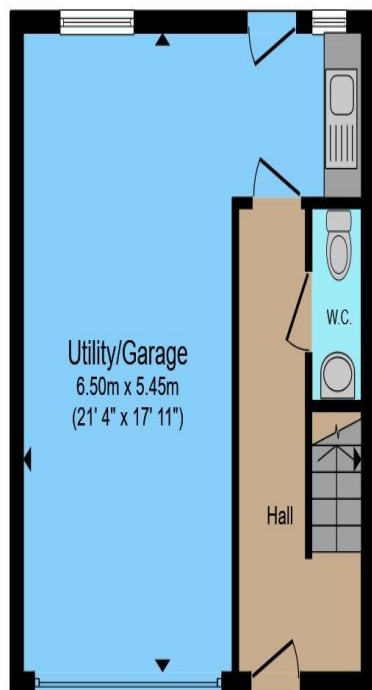
BATHROOM: Skylight to rear. Low level WC. Wash hand basin with mixer tap. Bath with mixer tap and mains shower over. Heated towel rail.

OUTSIDE

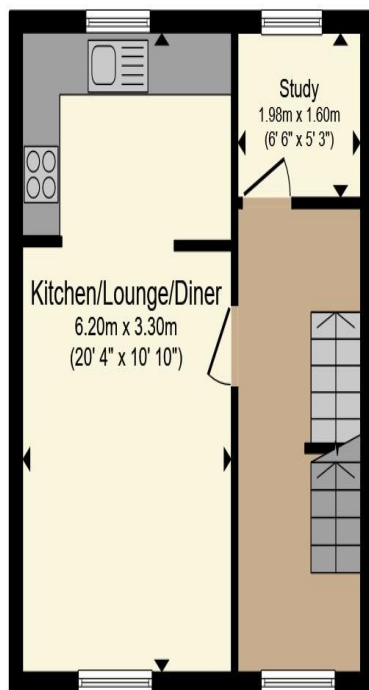
FRONT: Driveway providing off road parking.

REAR GARDEN: Enclosed by fencing. Mainly laid to gravel. Patio area.

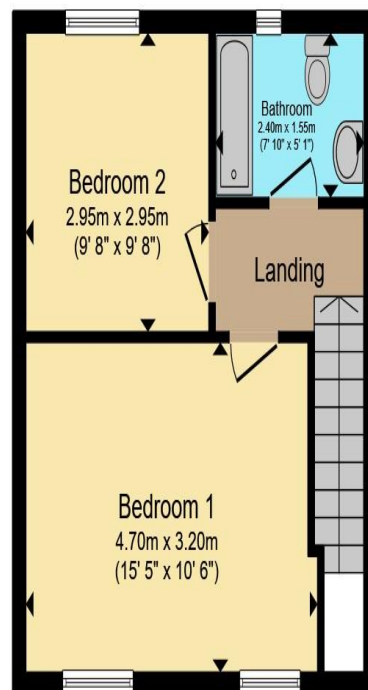




Ground Floor



First Floor



Second Floor

Total floor area 101.3 m² (1,090 sq.ft.) approx

This floor plan is for illustrative purposes only. It is not drawn to scale. Any measurements, floor areas (including any total floor area), openings and orientation are approximate. No details are guaranteed, they cannot be relied upon for any purpose and they do not form part of any agreement. No liability is taken for any error, omission or misstatement. A party must rely upon its own inspection(s). Powered by www.propertybox.io


**Sharman
Quinney**

To view this property call Sharman Quinney on:
01733 575757

Selling your property?

Contact us to arrange a **FREE** home valuation.

 01733 575757

 Loxley Centre, Werrington, Peterborough,
Cambridgeshire, PE4 5BW

 werrington@sharmanquinney.co.uk

 www.sharmanquinney.co.uk



 SCAN ME



Sharman Quinney Holdings Limited is registered in England and Wales under company number 4174227, Registered Office is Cumbria House, 16-20 Hockliffe Street, Leighton Buzzard, Bedfordshire, LU7 1GN. VAT Registration Number is 500 2481 05.

1: These particulars do not constitute part or all of an offer or contract. 2: The measurements indicated are supplied for guidance only and as such must be considered incorrect. 3: Potential buyers are advised to recheck the measurements before committing to any expense. 4: Sharman Quinney has not tested any apparatus, equipment, fixtures, fittings or services and it is the buyers interests to check the working condition of any appliances. 5: Sharman Quinney has not sought to verify the legal title of the property and buyers must obtain verification from their legal representative. 6: Intending purchasers will be asked to produce identification documentation at a later stage and we would ask your co-operation in order that there will be no delay in agreeing the sale. Ref: WER205726 – 0001

