



Dover Road, Peterborough  
**£220,000** **Freehold**

**Sharman  
Quinney**

# Key Features



- Three Bedrooms
- Two Reception Rooms
- Study
- Off Road Parking
- Enclosed Rear Garden

## GROUND FLOOR

**ENTRANCE HALL:** Glazed entrance door. UPVC Double glazed window to side. Radiator. Stairs to first floor.

**LOUNGE:** 4.59m x 3.98m (15'8" max x 13'8" max) Television point. Radiator. Wood and glazed doors to;

**DINING ROOM:** 3.08m x 2.46m (10'11" x 8'10") UPVC Double glazed French doors to rear. Radiator.

**LOBBY:** UPVC Double glazed door. Loft access. Laminate flooring.

**STUDY:** 1.53m x 1.55m (5'4" x 5'9") UPVC



Frosted double glazed window to rear.

KITCHEN: 5.81m x 2.46m (19'8" max x 8'10" max) UPVC Double glazed window to front. Fitted with a range of base and wall units. Stainless steel sink and drainer with mixer tap. Space for cooker, washing machine, under counter fridge and freezer. Storage cupboard housing wall mounted boiler. Radiator. Laminate flooring.

## FIRST FLOOR

LANDING: UPVC Double glazed window to front. Built in storage cupboard.

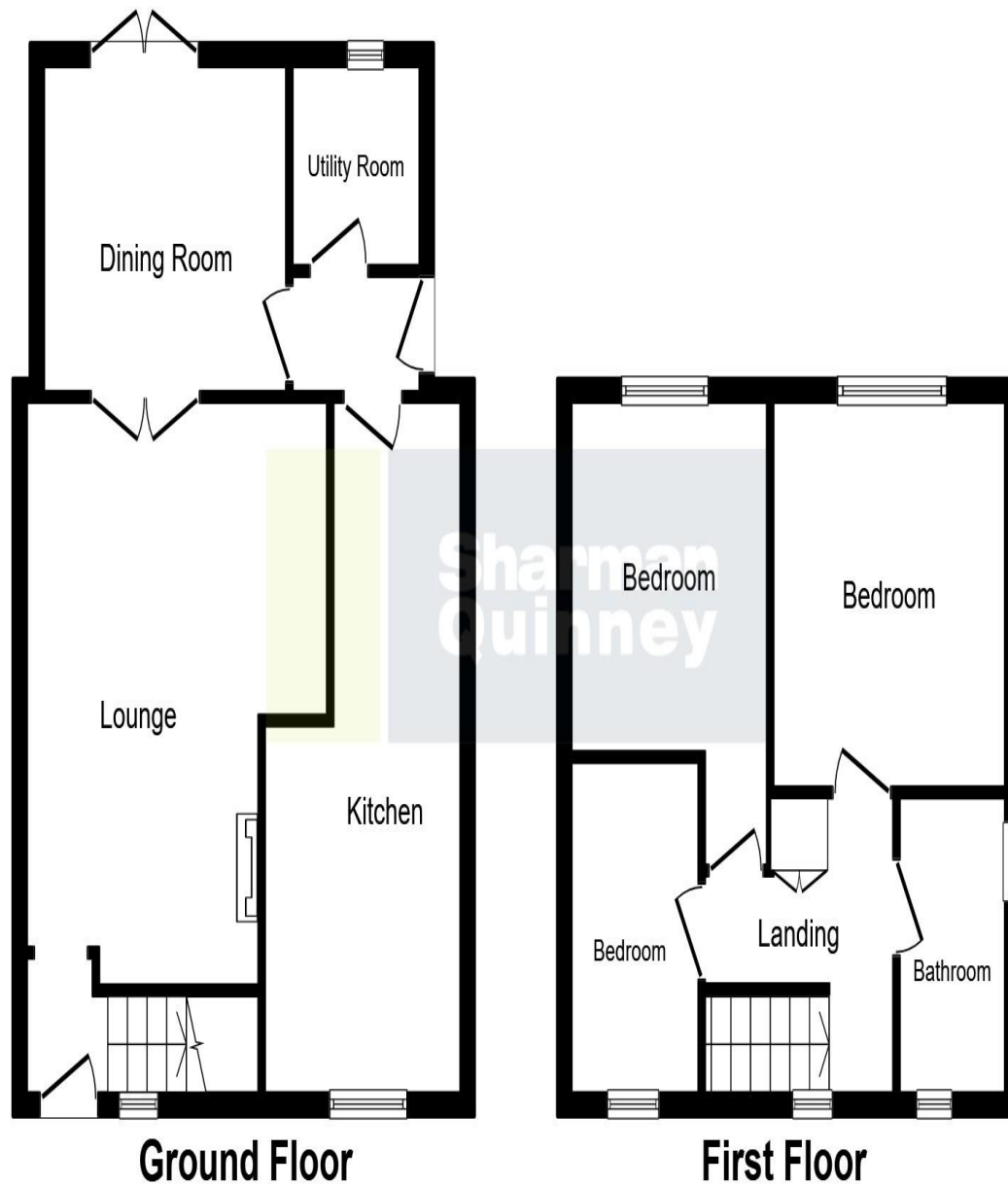
BEDROOM: 3.07m x 3.05m (10'8" max x 10'1" max) UPVC Double glazed window to rear. Radiator.

BEDROOM: 2.76m x 2.46m (9'6" plus recess x 8'10" max) UPVC Double glazed window to rear. Radiator.

BEDROOM: 2.45m x 1.55m (8'4" max x 5'11" max) UPVC Double glazed window to front. Radiator.

BATHROOM: UPVC Frosted double glazed window to front. Low level WC. Wash hand basin. Bath with wall mounted electric shower. Radiator. Tiled walls.





## OUTSIDE

**FRONT:** Laid to gravel and concrete providing off road parking.


**REAR GARDEN:** Enclosed by hedging. Side access gate. Patio area. Laid to lawn. Wooden garden shed. Brick built store currently used as a games room.

To view this property call Sharman Quinney on:  
**01733 575757**

# Selling your property?

Contact us to arrange a **FREE** home valuation.

 01733 575757

 Loxley Centre, Werrington, Peterborough,  
Cambridgeshire, PE4 5BW

 [werrington@sharmanquinney.co.uk](mailto:werrington@sharmanquinney.co.uk)

 [www.sharmanquinney.co.uk](http://www.sharmanquinney.co.uk)



 SCAN ME



Sharman Quinney Holdings Limited is registered in England and Wales under company number 4174227, Registered Office is Cumbria House, 16-20 Hockliffe Street, Leighton Buzzard, Bedfordshire, LU7 1GN. VAT Registration Number is 500 2481 05.

1: These particulars do not constitute part or all of an offer or contract. 2: The measurements indicated are supplied for guidance only and as such must be considered incorrect. 3: Potential buyers are advised to recheck the measurements before committing to any expense. 4: Sharman Quinney has not tested any apparatus, equipment, fixtures, fittings or services and it is the buyers interests to check the working condition of any appliances. 5: Sharman Quinney has not sought to verify the legal title of the property and buyers must obtain verification from their legal representative. 6: Intending purchasers will be asked to produce identification documentation at a later stage and we would ask your co-operation in order that there will be no delay in agreeing the sale. Ref: WER205736 - 0002

