



Ainsdale Drive, Peterborough
£425,000 Freehold

**Sharman
Quinney**

Key Features



- Four Bedrooms
- En-Suite To Master
- Lounge/Diner
- Kitchen/Diner
- Study
- Utility
- Double Garage

GROUND FLOOR

ENTRANCE HALL: UPVC Double glazed entrance door. Radiator. Stairs to first floor.

CLOAKROOM: Low level WC. Wash hand basin. Fitted cupboard.

STUDY: 3.07m x 2.14m (10'08" x 7'03") UPVC Double glazed window to side. Radiator.

LOUNGE/DINER: (L-Shape) 6.41m x 4.91m (21'06" max x 16'11" max) UPVC Double glazed window to front and side. Two radiators.

KITCHEN AREA: 3.06m x 3.06m (10'04" x 10'06") UPVC Frosted double glazed window to side. Fitted with a range of base and wall units. Sink



and drainer with mixer tap. Integrated fridge/freezer. Freestanding cooker and dishwasher. Opening to;

FAMILY/DINING AREA: 5.18m x 2.44m (17'01" x 8'03" max) UPVC Double glazed window to side and rear. UPVC Double glazed French doors to rear. Radiator.

UTILITY: 2.45m x 2.15m (8'5" x 7'06") UPVC Double glazed window to rear. Fitted with a range of base and wall units. Stainless steel sink and drainer with mixer tap. Wall mounted boiler. Radiator.

FIRST FLOOR

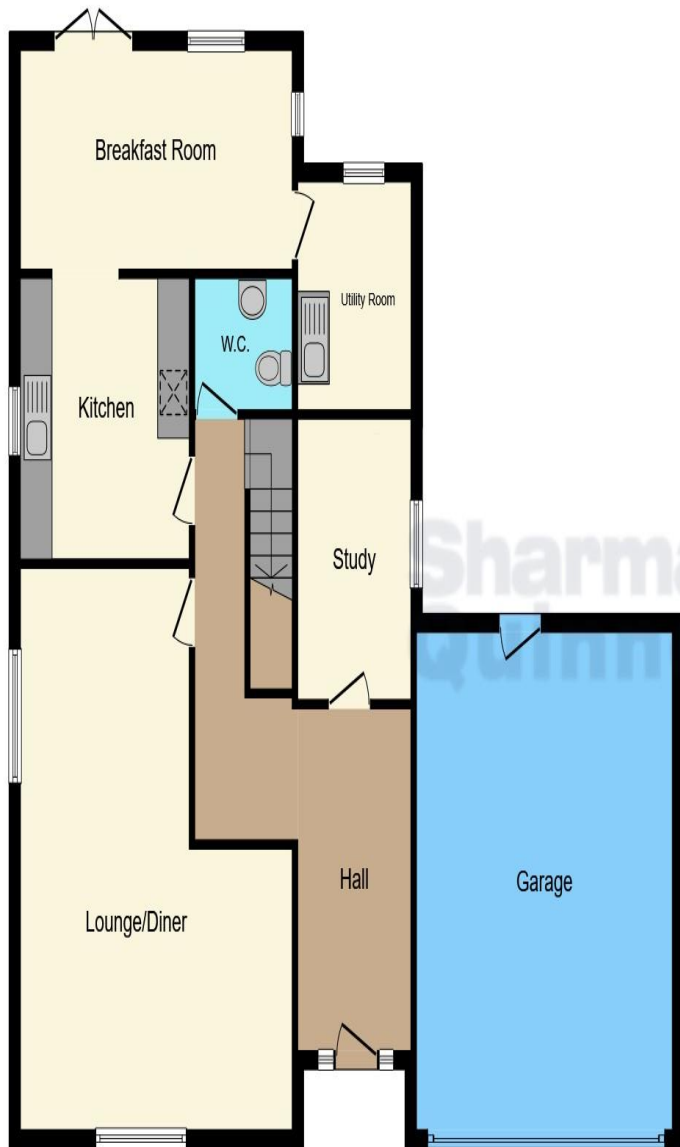
LANDING: UPVC Double glazed window to side. Radiator.

BEDROOM: 5.51m x 3.65m (18'10" max x 12' max) UPVC Double glazed window to rear. Radiator. Fitted wardrobes.

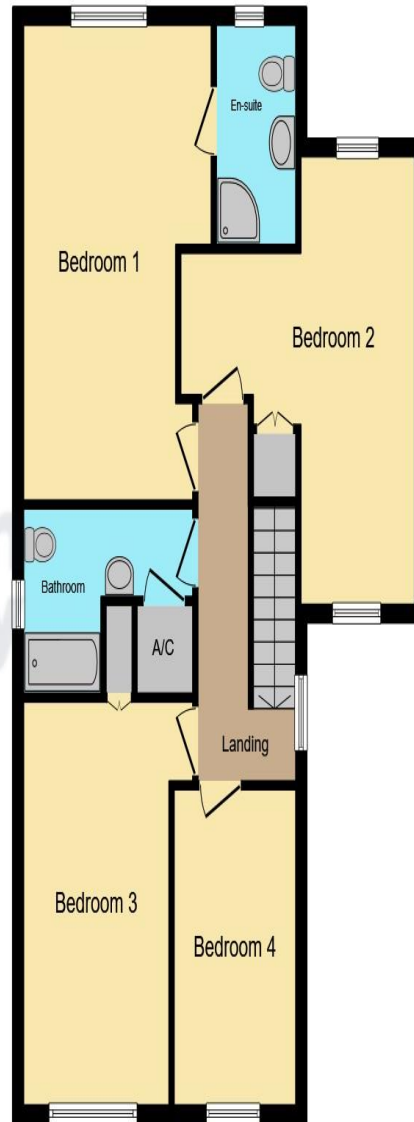
EN-SUITE: UPVC Frosted double glazed window to rear. Low level WC. Wash hand basin with mixer tap set in vanity unit. Shower cubicle with electric shower. Radiator.

BEDROOM: 4.87m x 4.89m (16'01" max x 16'05" max) (T-Shape) UPVC Double glazed window to front and rear. Radiator. Built in cupboard.





Ground Floor



First Floor

BEDROOM: 4.28m x 2.75m (14'07" max x 9'04" plus recess) UPVC Double glazed window to front. Radiator. Built in cupboard.

BEDROOM: 3.37m x 2.44m (11'08" x 8'03") UPVC Double glazed window to front. Radiator.

BATHROOM: UPVC Frosted double glazed window to side. Low level WC. Wash hand basin. Bath with mains shower over. Radiator. Built in cupboard.

OUTSIDE

FRONT: Driveway laid to block paving. Shrub borders.

DOUBLE GARAGE: Electric roller door. Power and lighting. Personal door to garden.

REAR GARDEN: Enclosed by fencing and wall. Patio area. Laid to lawn area with shrub borders. Decorative slate chip areas.

This floor plan is for illustrative purposes only. It is not drawn to scale. Any measurements, floor areas (including any total floor area), openings and orientation are approximate. No details are guaranteed, they cannot be relied upon for any purpose and they do not form part of any agreement. No liability is taken for any error, omission or misstatement. A party must rely upon its own inspection(s). Powered by www.focalagent.com

To view this property call Sharman Quinney on:
01733 575757

Selling your property?

Contact us to arrange a **FREE** home valuation.

 01733 575757

 Loxley Centre, Werrington, Peterborough,
Cambridgeshire, PE4 5BW

 werrington@sharmanquinney.co.uk

 www.sharmanquinney.co.uk



 SCAN ME



Sharman Quinney Holdings Limited is registered in England and Wales under company number 4174227, Registered Office is Cumbria House, 16-20 Hockliffe Street, Leighton Buzzard, Bedfordshire, LU7 1GN. VAT Registration Number is 500 2481 05.

1: These particulars do not constitute part or all of an offer or contract. 2: The measurements indicated are supplied for guidance only and as such must be considered incorrect. 3: Potential buyers are advised to recheck the measurements before committing to any expense. 4: Sharman Quinney has not tested any apparatus, equipment, fixtures, fittings or services and it is the buyers interests to check the working condition of any appliances. 5: Sharman Quinney has not sought to verify the legal title of the property and buyers must obtain verification from their legal representative. 6: Intending purchasers will be asked to produce identification documentation at a later stage and we would ask your co-operation in order that there will be no delay in agreeing the sale. Ref: WER205359 - 0001

