



Sunnymead, Werrington Peterborough
Guide Price £225,000 Freehold

**Sharman
Quinney**

Key Features



- No Onward Chain
- Detached Bungalow
- Refitted Wet Room
- Two Bedrooms
- Ample Off Road Parking
- Sought After Location

Ground Floor

Part glazed UPVC door to:

Entrance Hall

Glazed door into the lounge:

Lounge 3.8m x 3.5m (12'4" x 11'4")

UPVC double glazed window to the front, fitted gas fire, door to the kitchen and door to the inner hallway, and TV point.



Kitchen 3.6m 1.6m (9'8"x 5'2")

Single drainer sink unit with tiled splash back, UPVC double glazed window to the front, further fitted storage cupboards, one wall mounted wall cupboard, wall mounted gas boiler, recess for an electric cooker and washing machine, double radiator, recess space for a fridge freezer and a half glazed UPVC door to the side

Inner Hall

Doors leading to:

Bedroom 1 3.2 min x 3m (10'4"min x 9'8")

UPVC double glazed window to the rear, twin double doors to built in wardrobe, loft hatch, and radiator.

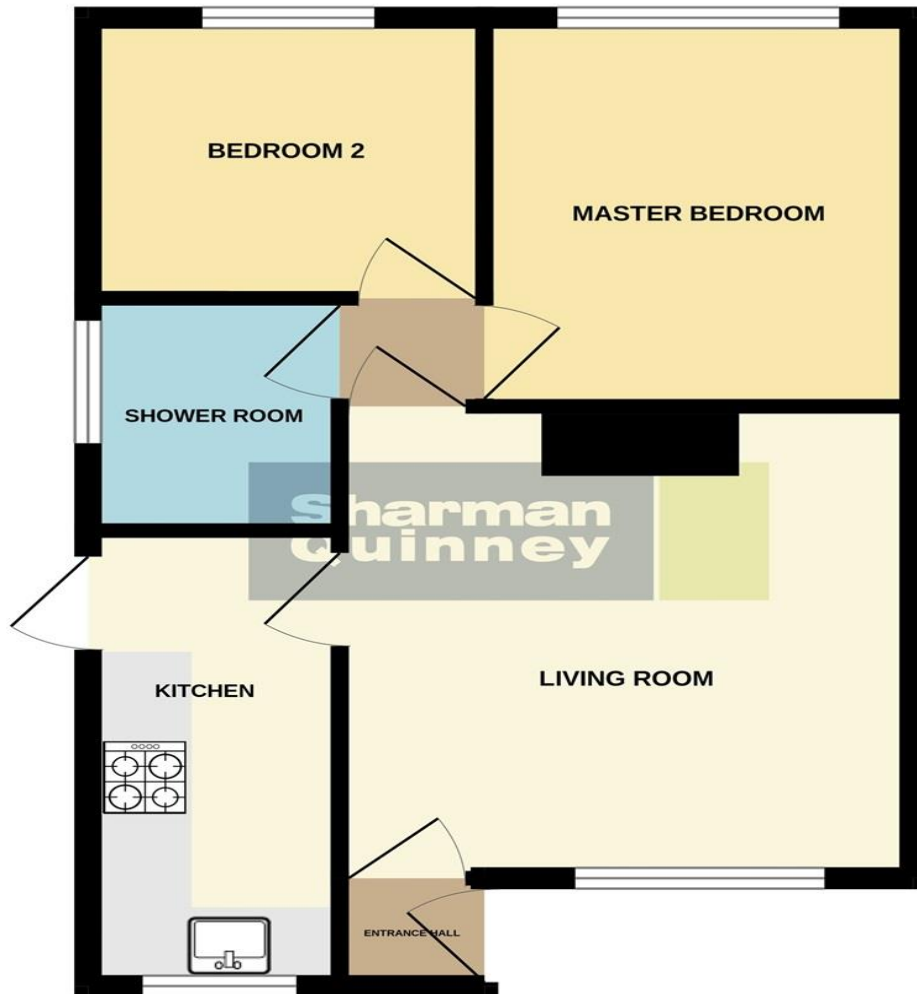
Bedroom 2 2.5m x 1.6m min (8'2" x 5'2") UPVC double glazed window to the rear, door to airing cupboard and separate door to storage cupboard/wardrobe .

Wet Room

Refitted to offer a modern wet room with wet floor, electric shower, wash and basin, low level WC, shower curtain, fully tiled walls, UPVC double glazed window to the side, radiator, and extractor fan.



GROUND FLOOR



Outside

Front

The front is open plan and laid to lawn with long driveway offering off road parking to side gate. There is the option of changing the fence and gate to allow for additional off road parking to the side of the bungalow.

Rear

Low maintenance garden with slabbed patio garden area, a small central lawn area, a block paved patio area, and two timber sheds.


NB: The sale of this property is subject to grant of probate. Please seek an update from the branch with regards to the potential timeframes involved.

To view this property call Sharman Quinney on:
01733 575757

Selling your property?

Contact us to arrange a **FREE** home valuation.

 01733 575757

 Loxley Centre, Werrington, Peterborough, Cambridgeshire, PE4 5BW

 werrington@sharmanquinney.co.uk

 www.sharmanquinney.co.uk



 SCAN ME



Sharman Quinney Holdings Limited is registered in England and Wales under company number 4174227, Registered Office is Cumbria House, 16-20 Hockliffe Street, Leighton Buzzard, Bedfordshire, LU7 1GN. VAT Registration Number is 500 2481 05.

1: These particulars do not constitute part or all of an offer or contract. 2: The measurements indicated are supplied for guidance only and as such must be considered incorrect. 3: Potential buyers are advised to recheck the measurements before committing to any expense. 4: Sharman Quinney has not tested any apparatus, equipment, fixtures, fittings or services and it is the buyers interests to check the working condition of any appliances. 5: Sharman Quinney has not sought to verify the legal title of the property and buyers must obtain verification from their legal representative. 6: Intending purchasers will be asked to produce identification documentation at a later stage and we would ask your co-operation in order that there will be no delay in agreeing the sale. Ref: WER205126 - 0001

