



Sapperton, Werrington Peterborough  
**Guide Price £330,000 - £350,000 Freehold**

**Sharman  
Quinney**



# Key Features



- Detached
- Sought After Location
- Two Bathrooms
- Large Open Plan Lounge Diner
- Ideal Family Home
- Ample Off Road Parking & Garage

## Ground Floor

Part glazed UPVC door to;

## Entrance Hall

Stairs to the first floor and landing with storage cupboard under, UPVC double glazed window to the front, radiator and doors to:

## Cloakroom

Fitted with a two piece suite comprising wash hand basin and low-level WC, UPVC obscure double glazed window to front, ceramic tiled flooring and feature walls.

## Lounge Area 5.3m x 3.3m (17'4" x 10'9")

UPVC double glazed patio doors and matching window to the rear garden, laminate flooring radiator and walk through to:





Dining Area. 3.3m x 2.6m (10'9" x 8'6")  
Ornate fireplace surround, and UPVC double glazed window to the side. Door to the hallway.

Kitchen 3.3m x 2.6m (10'9" x 8'6")  
Single stainless steel circular sink unit with mixer tap over, tiled splash back, UPVC double glazed window to the front, range of fitted drawer and base units, fitted worktops, four ring gas hob with glass and stainless steel extractor canopy hood over, recess with plumbing for a washing machine, recess space for a fridge freezer, radiator, and a part glazed UPVC door to the side.

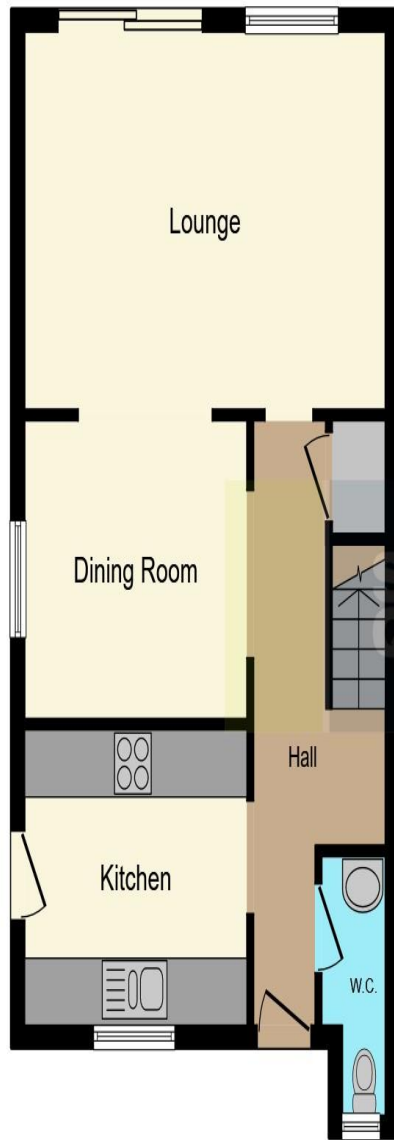
First Floor

Landing  
UPVC double glazed window to the side, loft hatch, linen cupboard housing a combination boiler.

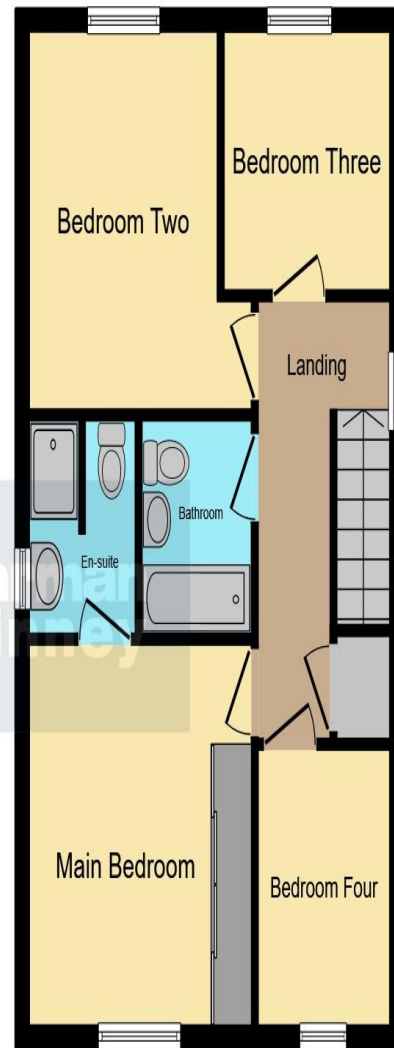
Bedroom 1 3.4m x 3.4 m (11'1" x 11'1")  
UPVC double glazed window to the front, radiator and picture rail.

En Suite Shower Room  
Three piece suite with shower cubicle with mains shower, and low level WC, fully tiled floor, feature wet walls, recess lighting, and radiator.





**Ground Floor**



**First Floor**

Bedroom 2 3.4m x 2.9m (11'1" x 9'6")  
UPVC double glazed window to the rear, and radiator.

Bedroom 3 2.4m x 2.3m (7'2" x 6'10")  
UPVC double glazed window to the front, and radiator.

Bedroom 4 2.4m 1.8m (7'2" x 5'4"0  
UPVC double glazed window to the front, and radiator.

Bathroom  
Fitted with three piece suite comprising bath with shower over, wash hand basin, low-level WC, heated towel rail, UPVC double glazed window to front.

Outside  
To the rear there is a garage and parking. The enclosed rear garden is hardstanding and makes for a low maintenance garden.


This floor plan is for illustrative purposes only. It is not drawn to scale. Any measurements, floor areas (including any total floor area), openings and orientation are approximate. No details are guaranteed, they cannot be relied upon for any purpose and they do not form part of any agreement. No liability is taken for any error, omission or misstatement. A party must rely upon its own inspection(s). Powered by [www.focalagent.com](http://www.focalagent.com)

To view this property call Sharman Quinney on:  
**01733 575757**

# Selling your property?

Contact us to arrange a **FREE** home valuation.

 01733 575757

 Loxley Centre, Werrington, Peterborough, Cambridgeshire, PE4 5BW

 [werrington@sharmanquinney.co.uk](mailto:werrington@sharmanquinney.co.uk)

 [www.sharmanquinney.co.uk](http://www.sharmanquinney.co.uk)



 SCAN ME



Sharman Quinney Holdings Limited is registered in England and Wales under company number 4174227, Registered Office is Cumbria House, 16-20 Hockliffe Street, Leighton Buzzard, Bedfordshire, LU7 1GN. VAT Registration Number is 500 2481 05.

1: These particulars do not constitute part or all of an offer or contract. 2: The measurements indicated are supplied for guidance only and as such must be considered incorrect. 3: Potential buyers are advised to recheck the measurements before committing to any expense. 4: Sharman Quinney has not tested any apparatus, equipment, fixtures, fittings or services and it is the buyers interests to check the working condition of any appliances. 5: Sharman Quinney has not sought to verify the legal title of the property and buyers must obtain verification from their legal representative. 6: Intending purchasers will be asked to produce identification documentation at a later stage and we would ask your co-operation in order that there will be no delay in agreeing the sale. Ref: WER205131 - 0001

