



Tanglewood, Werrington Peterborough
£240,000 **Freehold**

**Sharman
Quinney**

Key Features



- Enclosed Rear Garden
- Three Bedrooms
- Off Road Parking
- Kitchen/Diner
- Garage

Ground Floor

PVCu double part glazed entrance door to:

Porch

Doors to:

Lounge

4.35m x 3.20m (20'2" x 12'5" maximum)

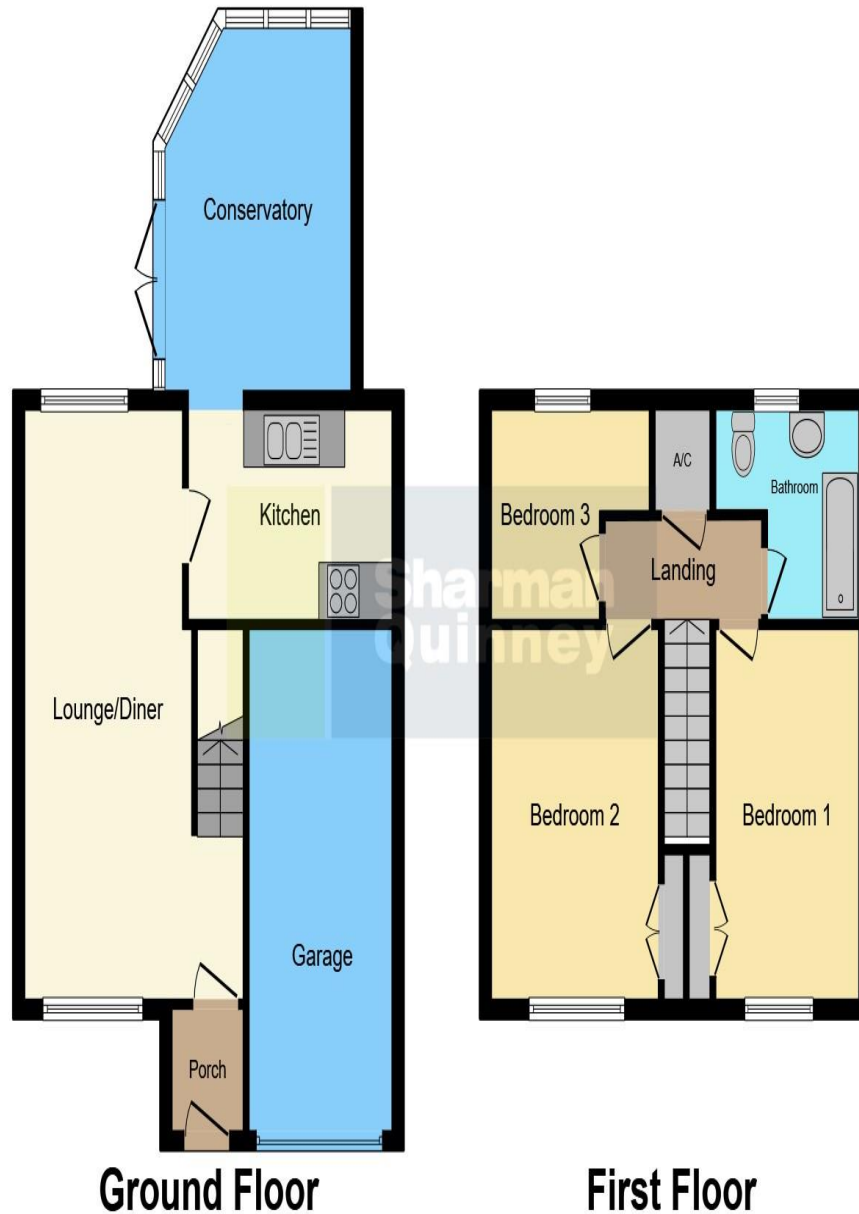
PVCu double glazed windows to the front and rear, two radiators, stairs, door to:

Kitchen/Diner

3.44m x 4.81m (20'10" x 10'3" minimum)

Fitted with a matching range of base and eye level units with worktop space over, sink unit, space for cooker, dryer, plumbing for washing machine and dishwasher, two radiators, PVCu double glazed windows to the rear, PVCu double glazed doors leading out to the garden.





Ground Floor

First Floor

First Floor

Landing

Built in airing cupboard, door to:

Bedroom 1

4.38m x 2.56m (12'4" x 9')

PVCu double glazed window to front, radiator, built in wardrobe.

Bedroom 2

3.29m x 3.62m (12'5" x 8'6")

PVCu double glazed window to front, radiator, built in wardrobe.

Bedroom 3

2.68m x 2.89m (7'6" maximum x 9'3" maximum)

PVCu double glazed window to rear, radiator.

Bathroom

Fitted with three piece suite comprising bath with shower over, wash hand basin, low-level WC, heated towel rail, PVCu obscure double glazed window to rear.

Outside

To the front there is a drive way leading to the single garage. The enclosed rear garden is mainly laid to lawn.


To view this property call Sharman Quinney on:
01733 575757

This floor plan is for illustrative purposes only. It is not drawn to scale. Any measurements, floor areas (including any total floor area), openings and orientation are approximate. No details are guaranteed, they cannot be relied upon for any purpose and they do not form part of any agreement. No liability is taken for any error, omission or misstatement. A party must rely upon its own inspection(s). Powered by www.focalagent.com

Selling your property?

Contact us to arrange a **FREE** home valuation.

 01733 575757

 Loxley Centre, Werrington, Peterborough,
Cambridgeshire, PE4 5BW

 werrington@sharmanquinney.co.uk

 www.sharmanquinney.co.uk



 SCAN ME



Sharman Quinney Holdings Limited is registered in England and Wales under company number 4174227, Registered Office is Cumbria House, 16-20 Hockliffe Street, Leighton Buzzard, Bedfordshire, LU7 1GN. VAT Registration Number is 500 2481 05.

1: These particulars do not constitute part or all of an offer or contract. 2: The measurements indicated are supplied for guidance only and as such must be considered incorrect. 3: Potential buyers are advised to recheck the measurements before committing to any expense. 4: Sharman Quinney has not tested any apparatus, equipment, fixtures, fittings or services and it is the buyers interests to check the working condition of any appliances. 5: Sharman Quinney has not sought to verify the legal title of the property and buyers must obtain verification from their legal representative. 6: Intending purchasers will be asked to produce identification documentation at a later stage and we would ask your co-operation in order that there will be no delay in agreeing the sale. Ref: WER205124 - 0005