



Reeves Way, Peterborough
£250,000 Freehold

**Sharman
Quinney**

Key Features



- Three Bedrooms
- Semi-detached
- Driveway
- Rear Garden
- Close to Local Schools and Amenities

The property benefits from a spacious driveway providing off-road parking for two vehicles. Internally, the accommodation is both versatile and well laid out, comprising two generous reception rooms offering flexible living and dining space. To the side of the property is a useful utility room, adding practicality and additional storage.

Upstairs, the home offers three well-proportioned bedrooms, all finished to a high standard, along with a modern family bathroom. Throughout, the property has been maintained to an excellent standard, allowing a purchaser to move straight in with minimal work required.

Located in a desirable residential area, Reeves Way offers convenient access to local amenities, schools, and transport links, making this an



attractive opportunityh for a wide range of buyers.

Entrance Porch

Entrance Hall

Lounge

Kitchen

Porch

W/C

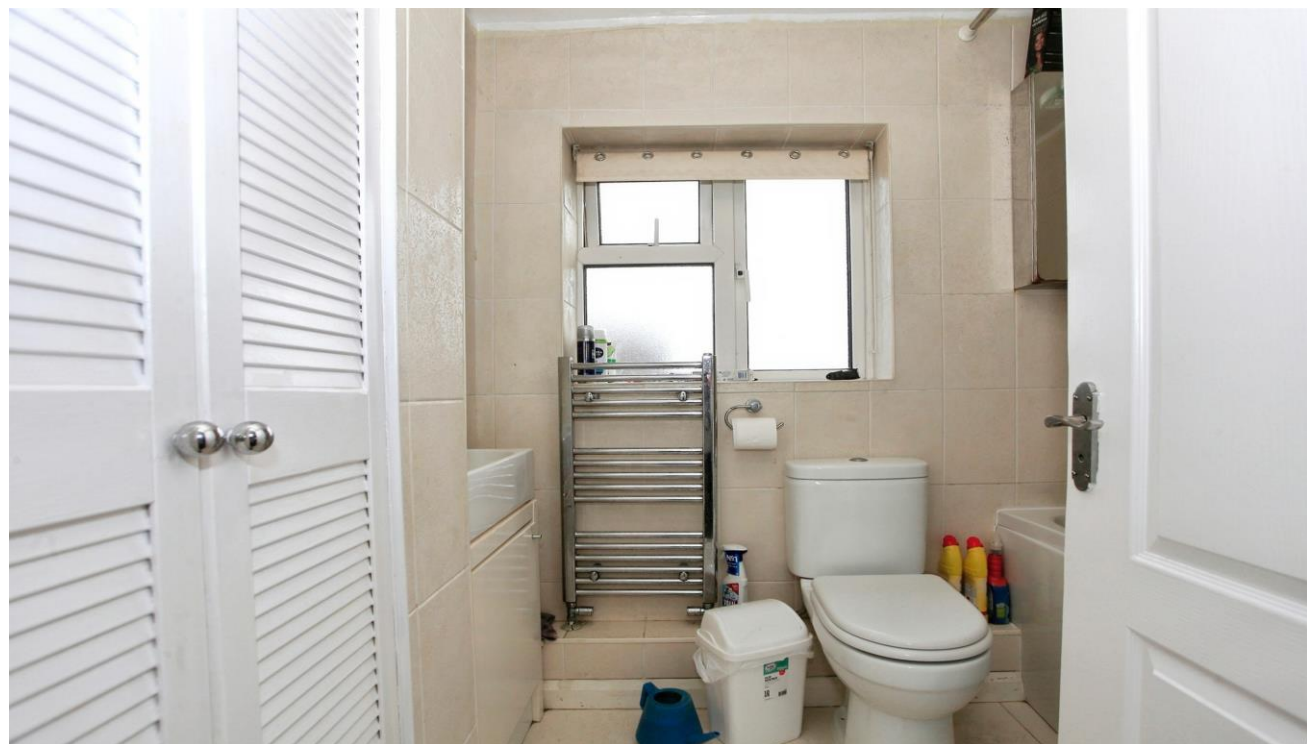
First Floor Landing

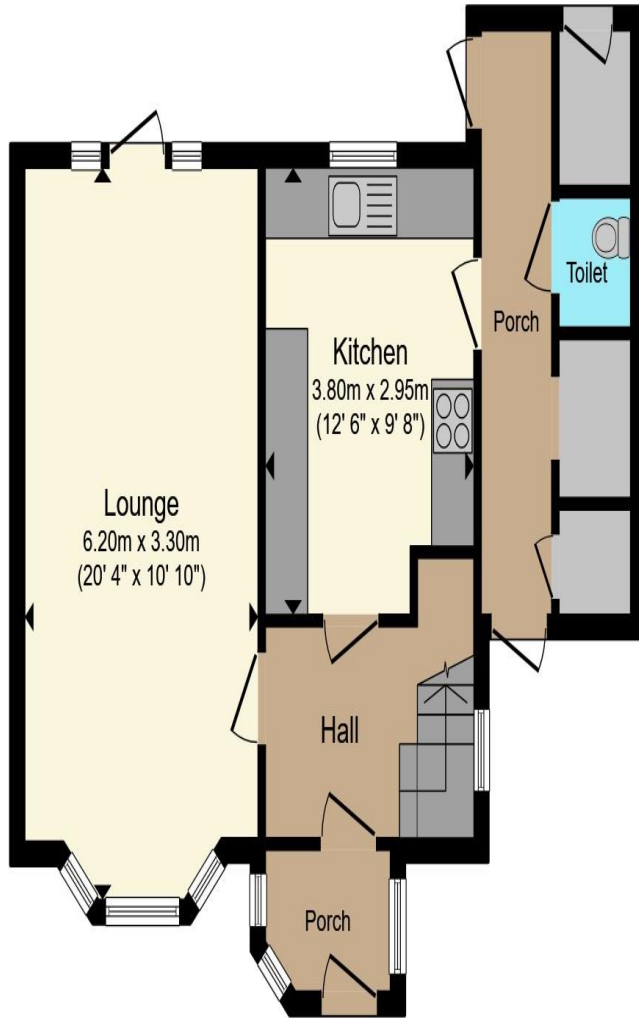
Bedroom One

Bathroom

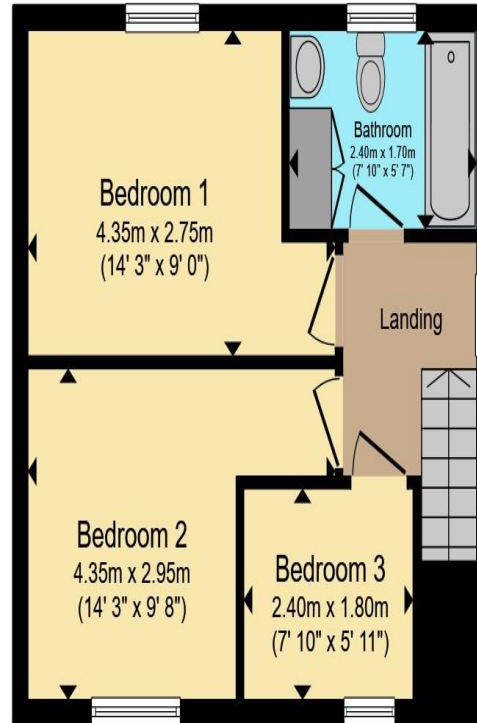
Bedroom Two

Bedroom Three





Ground Floor



First Floor

Total floor area 86.4 m² (930 sq.ft.) approx

This floor plan is for illustrative purposes only. It is not drawn to scale. Any measurements, floor areas (including any total floor area), openings and orientation are approximate. No details are guaranteed, they cannot be relied upon for any purpose and they do not form part of any agreement. No liability is taken for any error, omission or misstatement. A party must rely upon its own inspection(s). Powered by www.propertybox.io

**Sharman
Quinney**

To view this property call Sharman Quinney on:
01733 897896

Selling your property?

Contact us to arrange a **FREE** home valuation.

 01733 897896

 70 Albert Place, PETERBOROUGH,
Cambridgeshire, PE1 1DD

 peterborough@sharmanquinney.co.uk

 www.sharmanquinney.co.uk



 SCAN ME



Sharman Quinney Holdings Limited is registered in England and Wales under company number 4174227, Registered Office is Cumbria House, 16-20 Hockliffe Street, Leighton Buzzard, Bedfordshire, LU7 1GN. VAT Registration Number is 500 2481 05.

1: These particulars do not constitute part or all of an offer or contract. 2: The measurements indicated are supplied for guidance only and as such must be considered incorrect. 3: Potential buyers are advised to recheck the measurements before committing to any expense. 4: Sharman Quinney has not tested any apparatus, equipment, fixtures, fittings or services and it is the buyers interests to check the working condition of any appliances. 5: Sharman Quinney has not sought to verify the legal title of the property and buyers must obtain verification from their legal representative. 6: Intending purchasers will be asked to produce identification documentation at a later stage and we would ask your co-operation in order that there will be no delay in agreeing the sale. Ref: PTB205789 - 0001

