



Walkers Way, Bretton Peterborough
£450,000 Freehold

**Sharman
Quinney**

Key Features



- Executive Detached Home. Well Presented
- Four Bedrooms. Three Reception Rooms
- Two Bathrooms. Double Garage
- Sought After Location. No Onward Chain

Easy access to the hospital, the railway station, city centre and local schools

Entrance Hall
Door to large and spacious entrance hall with stairs to first floor and landing, radiator and doors to the following rooms:

Study/office 9'1 x 7'9"

Sealed unit double glazed window to side, three doors to built in storage cupboards with three door cupboards above, and radiator.

Family Lounge. 19'10" by 11'7"

Feature fireplace surround with matching hearth, inset gas coal fire, UPVC double glazed patio doors to the rear garden, sealed unit double glazed window to the front, two radiators, and TV point.

Dining Room 11'3" by 9'8"

UPVC double glazed window to rear overlooking



the garden, radiator, glazed double doors leading in the entrance hall, radiator, and door to the kitchen.

Kitchen 11'3" by 10'6"

Single drainer sink unit with mixer tap over and tiled splash backs and drainer, UPVC double glazed window to rear, good range of fitted quality drawer and base units fitted worktops over and matching wall cupboards. Integrated four ring gas hob with oven under and extractor hood. Additional storage cupboards, plumbing for dishwasher, washing machine, radiator, and archway leading to utility room.

Utility Room. 9'1" by 7'9"

Fitting worktops with wall mounted gas boiler, radiator and door to side.

Stairs to First Floor and Landing

Window to front, loft access, and doors to the following rooms:

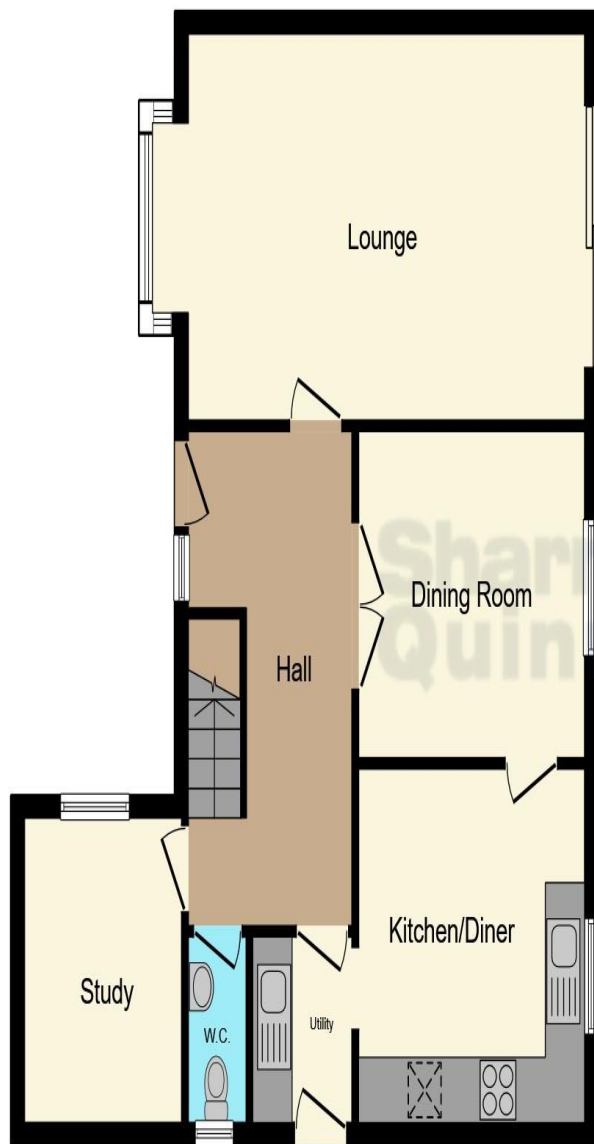
Bedroom One. 13'5" by 10'1" excluding door recess

UPVC double glazed window to rear, twin mirror fronted built in wardrobes with insert storage by with hanging rail and shelving, radiator, and, door to ensuite shower room.

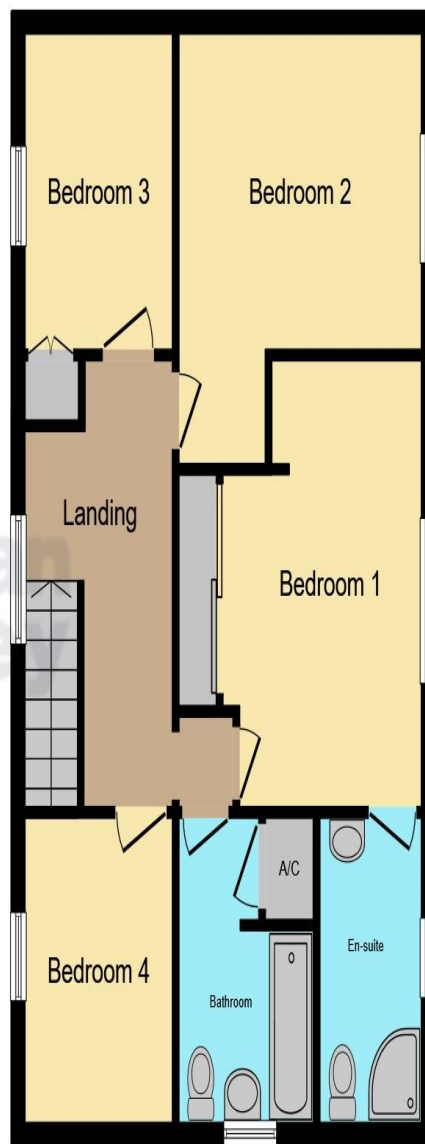
En Suite Shower Room

Three piece suite with shower cubicle with mains shower, vanity wash hand basin, with drawers





Ground Floor



First Floor

under, low level WC, radiator, airing cupboard, radiator, fully tiled walls, UPVC double glazed window.

Bedroom Two 12'1" by 9'8"
UPVC double glazed window to rear, and radiator.

Bedroom Three. 9'1" by 7'4"
Sealed unit double glazed window to front, built in storage cupboard/wardrobe, and radiator.

Bedroom Four. 8' 11" by 7'4"
Sealed unit double glazed window to front, and radiator.

Bathroom
Three-piece suit comprising of panelled bath with shower over and tiled surround, vanity wash hand basin with drawers under, boxed in low-level WC, door to airing cupboard, fully tiled walls and UPVC double glazed window to side.

Outside
Front
This property situated in a quiet cul-de-sac and is situated on a generous side plot with ample off-

This floor plan is for illustrative purposes only. It is not drawn to scale. Any measurements, floor areas (including any total floor area), openings and orientation are approximate. No details are guaranteed, they cannot be relied upon for any purpose and they do not form part of any agreement. No liability is taken for any error, omission or misstatement. A party must rely upon its own inspection(s). Powered by www.focalagent.com

To view this property call Sharman Quinney on:
01733 897896

Selling your property?

Contact us to arrange a **FREE** home valuation.

 01733 897896

 70 Albert Place, PETERBOROUGH,
Cambridgeshire, PE1 1DD

 peterborough@sharmanquinney.co.uk

 www.sharmanquinney.co.uk



 SCAN ME



Sharman Quinney Holdings Limited is registered in England and Wales under company number 4174227, Registered Office is Cumbria House, 16-20 Hockliffe Street, Leighton Buzzard, Bedfordshire, LU7 1GN. VAT Registration Number is 500 2481 05.

1: These particulars do not constitute part or all of an offer or contract. 2: The measurements indicated are supplied for guidance only and as such must be considered incorrect. 3: Potential buyers are advised to recheck the measurements before committing to any expense. 4: Sharman Quinney has not tested any apparatus, equipment, fixtures, fittings or services and it is the buyers interests to check the working condition of any appliances. 5: Sharman Quinney has not sought to verify the legal title of the property and buyers must obtain verification from their legal representative. 6: Intending purchasers will be asked to produce identification documentation at a later stage and we would ask your co-operation in order that there will be no delay in agreeing the sale. Ref: PTB206724 - 0004

