



Dunsberry, Bretton Peterborough
£300,000 **Freehold**

**Sharmar
Quinney**

Key Features



- Three Bedrooms
- Dining Area
- Downstairs Cloakroom
- Off Road Parking
- Enclosed Rear Garden

Ground Floor

PVCu double part glazed entrance door to:

Porch
Doors to:

Cloakroom

Fitted with a two piece suite comprising wash hand basin and low-level WC.

Lounge

5.61m x 6.01m (19'9" maximum x 16'10" maximum) PVCu double glazed window to front, radiator.

Dining Area

3.18m x 2.36m (10'5" x 7'9") PVCu double glazed



doors to garden, radiator.

Kitchen

3.25m x 2.67m (10'8" x 8'9") Fitted with a matching range of base and eye level units with worktop space over, sink unit, built in oven and hob, plumbing for washing machine, PVCu double glazed window to rear.

First Floor

Landing

Doors to:

Bedroom One

3.51m x 3.12m (11'6" x 10'3") PVCu double glazed window to front, radiator, built in wardrobe.

Bedroom Two

2.77m x 2.57m (9'1" maximum x 8'5") PVCu double glazed window to rear, radiator, built in wardrobe.

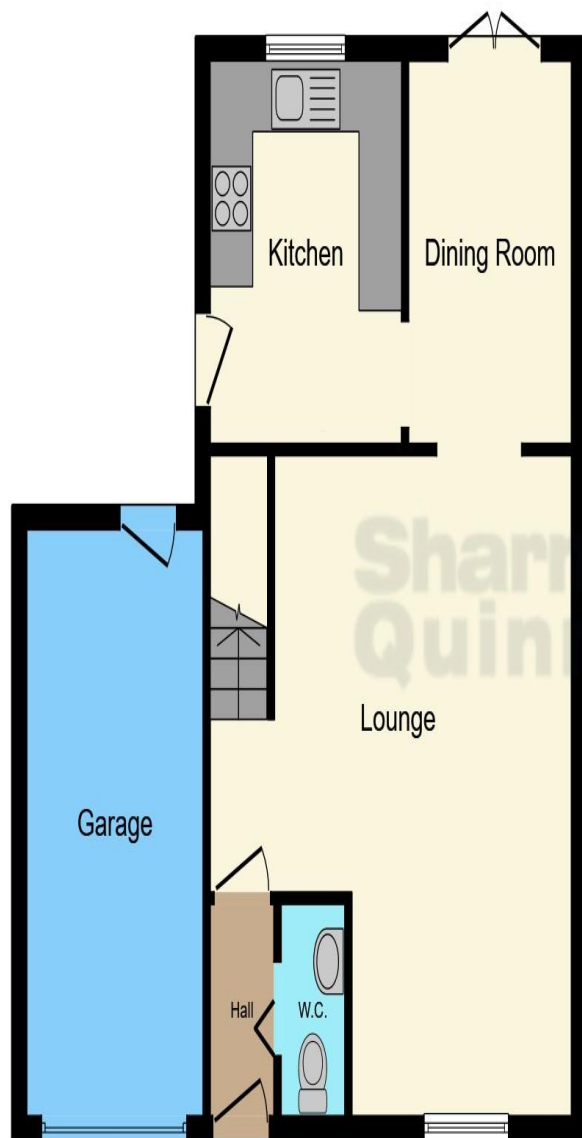
Bedroom Three

2.59m x 1.93m (8'6" x 6'4") PVCu double glazed window to front, radiator.

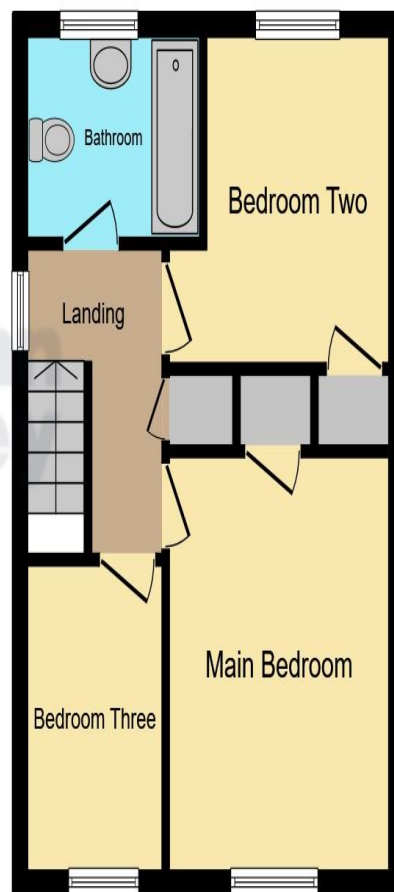
Bathroom

Fitted with a three piece suite comprising bath with shower over, wash hand basin, low-level WC, PVCu obscure double glazed window to rear.





Ground Floor



First Floor

Outside

Driveway to the front leading to garage 16'4" x 8'2" (4.98m x 2.49m). The enclosed rear garden is laid to lawn with flower and shrub borders.

This floor plan is for illustrative purposes only. It is not drawn to scale. Any measurements, floor areas (including any total floor area), openings and orientation are approximate. No details are guaranteed, they cannot be relied upon for any purpose and they do not form part of any agreement. No liability is taken for any error, omission or misstatement. A party must rely upon its own inspection(s). Powered by www.focalagent.com

To view this property call Sharman Quinney on:
01733 897896

Selling your property?

Contact us to arrange a **FREE**
home valuation.

 01733 897896

 70 Albert Place, PETERBOROUGH,
Cambridgeshire, PE1 1DD

 peterborough@sharmanquinney.co.uk

 www.sharmanquinney.co.uk



 SCAN ME



Sharman Quinney Holdings Limited is registered in England and Wales under company number 4174227, Registered Office is Cumbria House, 16-20 Hockliffe Street, Leighton Buzzard, Bedfordshire, LU7 1GN. VAT Registration Number is 500 2481 05.

1: These particulars do not constitute part or all of an offer or contract. 2: The measurements indicated are supplied for guidance only and as such must be considered incorrect. 3: Potential buyers are advised to recheck the measurements before committing to any expense. 4: Sharman Quinney has not tested any apparatus, equipment, fixtures, fittings or services and it is the buyers interests to check the working condition of any appliances. 5: Sharman Quinney has not sought to verify the legal title of the property and buyers must obtain verification from their legal representative. 6: Intending purchasers will be asked to produce identification documentation at a later stage and we would ask your co-operation in order that there will be no delay in agreeing the sale. Ref: PTB206576 - 0003

