



Vere Road, Peterborough  
£320,000 **Freehold**

**Sharman  
Quinney**

# Key Features



- Four Bedrooms
- Downstairs Shower Room
- Upstairs Bathroom
- Off Road Parking
- Enclosed Rear Garden

## GROUND FLOOR

**ENTRANCE HALL:** Entrance door. Stairs to first floor.

**LOUNGE:** 3.95m x 3.52m (12'11" x 11'6") UPVC Double glazed bay window to front. Radiator. Feature fireplace. Opening to;

**DINING ROOM:** 3.93m x 3.07m (12'10" x 10'0") UPVC Double glazed window to rear. Radiator.

**KITCHEN:** 3.99m x 2.84m (13'1" x 9'3") UPVC Double glazed window to side. Door to garden. Fitted with a range of base and wall units. Stainless steel sink and drainer with mixer tap. Built in double oven. Fitted hob with cooker hood



over. Heated towel rail. Opening to;

FAMILY ROOM: 4.69m x 4.08m (15'4" x 13'4")  
UPVC Double glazed windows and French doors to rear.

SHOWER ROOM: UPVC Frosted double glazed window. Low level WC. Wash hand basin with mixer tap set in vanity unit. Shower cubicle. Heated towel rail.

## FIRST FLOOR

LANDING: Stairs to second floor.

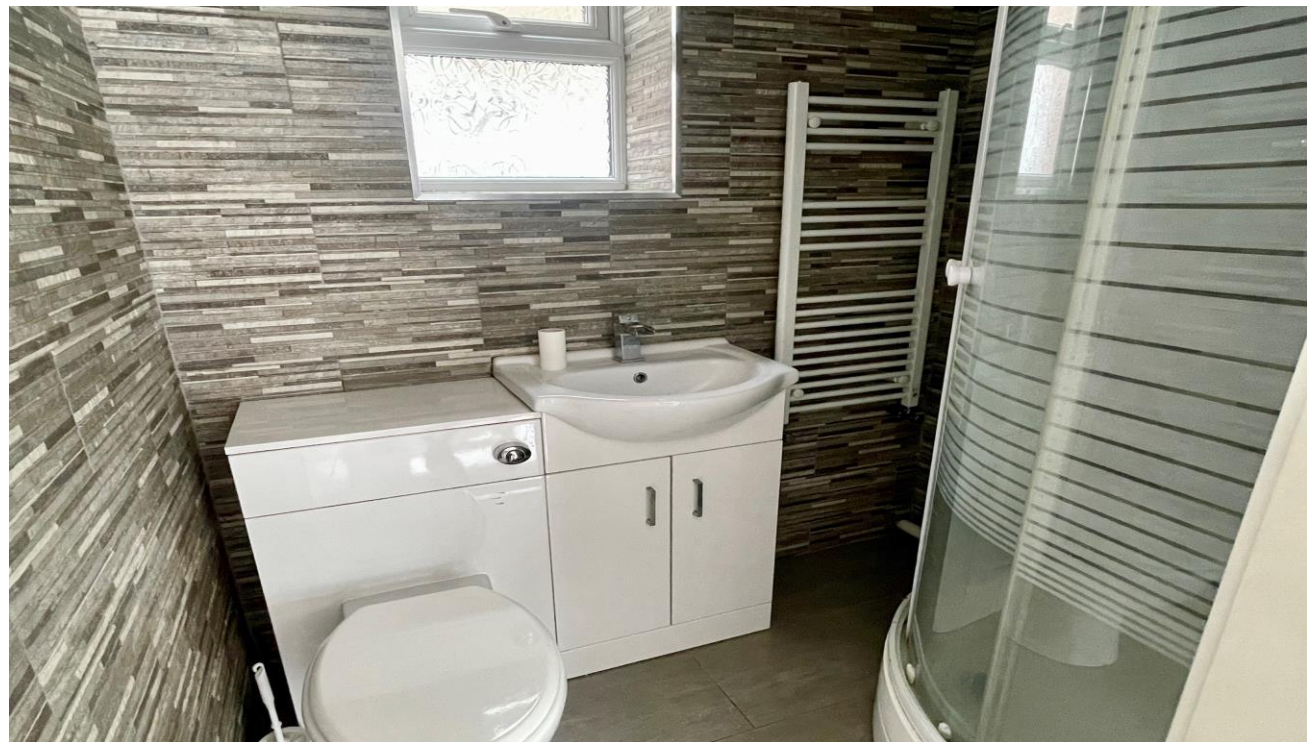
BEDROOM ONE: 3.90m x 2.98m max (12'9" x 9'9" max)  
UPVC Double glazed bay window to front. Radiator. Fitted wardrobes.

BEDROOM TWO: 3.86m max x 3.01m max (12'7" max x 9'10" max)  
UPVC Double glazed window to rear. Radiator. Fitted wardrobes.

BEDROOM FOUR: 2.96m x 1.82m (9'8" x 5'11")  
UPVC Double glazed window to front. Radiator.

BATHROOM: 2.80m x 2.06m (9'2" x 6'9") UPVC Frosted double glazed window to rear. Low level WC. Wash hand basin with mixer tap set in vanity unit. Shower cubicle. Bath. Heated towel rail.

## SECOND FLOOR



## LANDING

BEDROOM THREE: 3.52m x 2.69m (11'6" x 8'9")  
(Restricted height) Two skylight windows. Built in storage.

## OUTSIDE

FRONT: Driveway providing off road parking.


REAR GARDEN: Enclosed by brick wall. Laid to paving.

To view this property call Sharman Quinney on:  
**01733 897896**

# Selling your property?

Contact us to arrange a **FREE** home valuation.

 01733 897896

 70 Albert Place, PETERBOROUGH,  
Cambridgeshire, PE1 1DD

 peterborough@sharmanquinney.co.uk

 [www.sharmanquinney.co.uk](http://www.sharmanquinney.co.uk)



 SCAN ME



Sharman Quinney Holdings Limited is registered in England and Wales under company number 4174227, Registered Office is Cumbria House, 16-20 Hockliffe Street, Leighton Buzzard, Bedfordshire, LU7 1GN. VAT Registration Number is 500 2481 05.

1: These particulars do not constitute part or all of an offer or contract. 2: The measurements indicated are supplied for guidance only and as such must be considered incorrect. 3: Potential buyers are advised to recheck the measurements before committing to any expense. 4: Sharman Quinney has not tested any apparatus, equipment, fixtures, fittings or services and it is the buyers interests to check the working condition of any appliances. 5: Sharman Quinney has not sought to verify the legal title of the property and buyers must obtain verification from their legal representative. 6: Intending purchasers will be asked to produce identification documentation at a later stage and we would ask your co-operation in order that there will be no delay in agreeing the sale. Ref: PTB206522 - 0001

