



Northfield Road, Peterborough
£260,000 **Freehold**

**Sharman
Quinney**

Key Features



- Three Bedrooms
- Two Reception Rooms
- Downstairs Cloakroom
- Off Road Parking
- Garage

GROUND FLOOR

ENTRANCE HALL: Wood and glazed entrance door. UPVC Frosted double glazed window to side. Radiator. Built in under stairs storage cupboard housing wall mounted boiler.

LOUNGE: 4.29m x 3.35m (14'09" max x 11' plus recess) UPVC Double glazed bay window to front. Radiator. Feature fireplace.

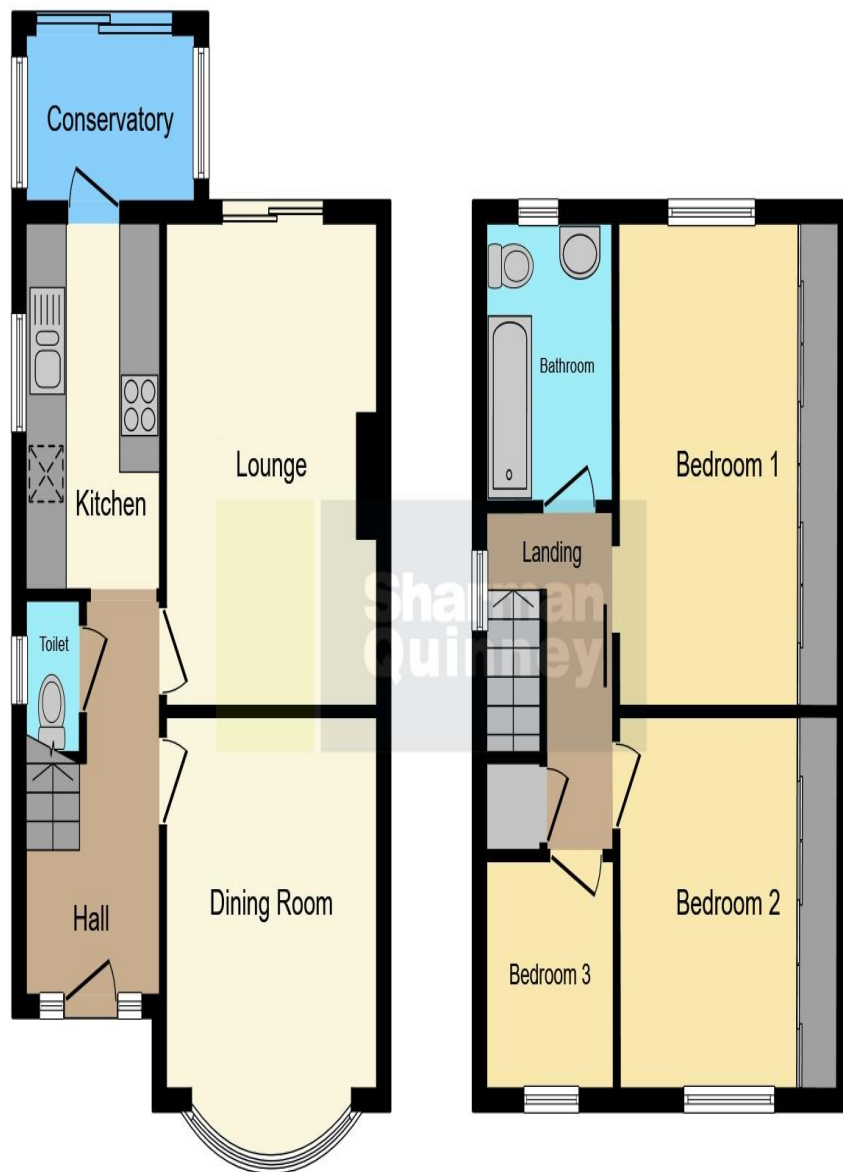
DINING ROOM: 3.97m x 3.06m (13'05" x 10'07" plus recess) Patio doors to rear. Radiator.

KITCHEN: 3.98m x 2.13m (13'09" x 7') UPVC Double glazed window to side. Fitted with a range of base units. Stainless steel sink and drainer with mixer tap. Built in double oven. Fitted hob. Radiator. Breakfast bar. Built in cupboard.

UTILITY/LOBBY: UPVC Double glazed door to rear. Space and plumbing for washing machine. Fitted base unit.

CLOAKROOM: UPVC Double glazed window to side. Low





Ground Floor

First Floor

This floorplan is for illustrative purposes only and is not drawn to scale. Measurements, floor-areas, openings and orientations are approximate. They should not be relied upon for any purpose and do not form any part of an agreement. No liability is taken for any error or mis-statement. All parties must rely on their own inspections.

level WC. Radiator.

FIRST FLOOR

LANDING: UPVC Double glazed window to side.

BEDROOM: 4.58m x 3.35m (15'03" x 11'01" to wardrobes) UPVC Double glazed bay window to front. Radiator. Fitted wardrobes.

BEDROOM: 3.97m x 3'07m (13'04" max x 10'09" plus recess) UPVC Double glazed window to rear. Radiator.

BEDROOM: 2.45m x 1.85m (8'04" x 6'09") UPVC Double glazed window to front. Radiator.

BATHROOM: UPVC frosted double glazed window to side. Low level WC. Wash hand basin with mixer tap set in vanity unit. Bath with mains shower over. Radiator. Built in cupboard.

OUTSIDE

FRONT: Driveway providing off road parking.

GARAGE: Up and over door. Window and personal door to side.


REAR GARDEN: Enclosed by fencing and hedging. Mainly laid to lawn. Planted shrubs and trees.

To view this property call Sharman Quinney on:
01733 897896

Selling your property?

Contact us to arrange a **FREE** home valuation.

 01733 897896

 70 Albert Place, PETERBOROUGH,
Cambridgeshire, PE1 1DD

 peterborough@sharmanquinney.co.uk

 www.sharmanquinney.co.uk



 SCAN ME



Sharman Quinney Holdings Limited is registered in England and Wales under company number 4174227, Registered Office is Cumbria House, 16-20 Hockliffe Street, Leighton Buzzard, Bedfordshire, LU7 1GN. VAT Registration Number is 500 2481 05.

1: These particulars do not constitute part or all of an offer or contract. 2: The measurements indicated are supplied for guidance only and as such must be considered incorrect. 3: Potential buyers are advised to recheck the measurements before committing to any expense. 4: Sharman Quinney has not tested any apparatus, equipment, fixtures, fittings or services and it is the buyers interests to check the working condition of any appliances. 5: Sharman Quinney has not sought to verify the legal title of the property and buyers must obtain verification from their legal representative. 6: Intending purchasers will be asked to produce identification documentation at a later stage and we would ask your co-operation in order that there will be no delay in agreeing the sale. Ref: PTB206308 - 0003