



Quarry Lane, Swaffham Bulbeck, CB25 0LU



## Quarry Lane

Swaffham Bulbeck,  
CB25 0LU

- \*Buy now before stamp duty changes end of March 2025\*
- Velfac aluminium casement windows
- Bespoke handleless kitchen units by Cambridge Kitchens
- Integrated Bosch double oven and induction hob
- Off-street parking for multiple cars
- Central heating via air source heat pump
- Zoned underfloor heating to ground floor
- Generous sized garden
- Turfed garden

\*Buy now before stamp duty changes end of March 2025\*

Presenting a beautiful new semi-detached home with 2 bedrooms, located in the sought after village of Swaffham Bulbeck.

2 1 1

## Offers In The Region Of £360,000



This beautifully designed property features a spacious open-plan living area, modern kitchen with premium appliances, and well-proportioned bedrooms. This home offers a private garden and energy-efficient features throughout. Located just a short drive from Cambridge, the home provides the perfect blend of countryside charm and city convenience. Ideal for growing families and first-time buyers

#### External Windows and Doors

- . Vefac aluminium casement / timber sub-frame composite windows and doors
- . Sliding doors to lounge
- . Aluminium weather canopy to front door
- . Galvanised steel rainwater gutters and downpipes

#### Internal Doors

- . Solid core flush doors with a rebated MDF architrave surround and good quality brushed stainless steel lever handles
- . Mirrored sliding doors to ground floor hall cupboard

#### Heating and Plumbing

- . Zoned underfloor heating to ground floor, aluminium radiators to second floor, pressurized hot water cylinder – all independently controlled and served by an air source heat pump

#### Electrics

- . USB outlet sockets to all bedrooms and kitchen
- . Timed and thermostatically controlled chrome electric towel rails to bathrooms
- . "Ring" door bell
- . Loft mounted TV aerial distributing to all bedrooms and lounge
- . Downlighters to kitchen, hall, utility, pendants to other areas
- . External lights to front and rear doors

#### Floor Coverings

- . Porcelain wood effect plank tiles to the ground floor
- . Porcelanosa floor tiles to bathroom
- . Remaining areas fully carpeted

#### Wall Coverings

- . Porcelanosa wall tiles, recessed mirror detail

#### Kitchens / Utility

- . Bespoke handleless kitchen units by Cambridge kitchens with 12mm compact laminate worktop
- . Integrated Bosch double oven, Bosch induction hob, Bosch undermount canopy extractor hood
- . Integrated CDA 70/30 fridge freezer
- . Integrated CDA 60cm dishwasher
- . Pre-plumbed appliance voids to utility area with worktop and wall unit over
- . Resin composite sinks

#### Sanitaryware

- . Duravit baths with waste filling
- . Duravit back to wall WC's
- . Hansgrohe taps and shower valves
- . Riser rail shower and fixed glass screen over bath
- . Vanity units and sinks to all cloaks & bathrooms

#### Decorations

- . Matt "skimming stone" emulsion to walls
- . Matt white emulsion to ceiling
- . Eggshell "skimming stone" to all internal woodwork

#### External

- . Patio – Grey Sandstone Paving
- . Drive – Rumbled Trio block paving

Turfed rear garden



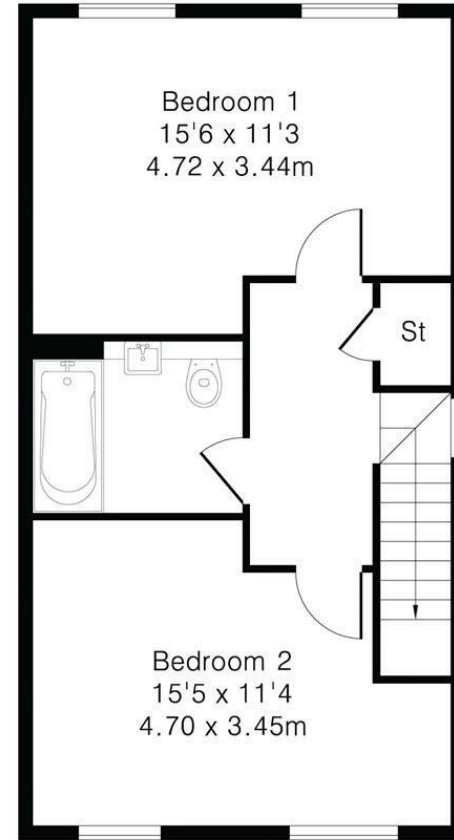
## Approximate Gross Internal Area 926 sq ft - 86 sq m

Ground Floor Area 463 sq ft – 43 sq m

First Floor Area 463 sq ft – 43 sq m



Ground Floor



First Floor

Energy Efficiency Rating		Current	Potential
Very energy efficient - lower running costs			96
(92 plus) A		86	
(81-91) B			
(69-80) C			
(55-68) D			
(39-54) E			
(21-38) F			
(1-20) G			
Not energy efficient - higher running costs			
England & Wales		EU Directive 2002/91/EC	

Clifton House 1-2 Clifton Road, Cambridge, CB1 7EA | 01223 214214 | cheffins.co.uk



IMPORTANT: we would like to inform prospective purchasers that these sales particulars have been prepared as a general guide only. A detailed survey has not been carried out, nor the services, appliances and fittings tested. Room sizes should not be relied upon for furnishing purposes and are approximate. If floor plans are included, they are for guidance only and illustration purposes only and may not be to scale. If there are any important matters likely to affect your decision to buy, please contact us before viewing the property.