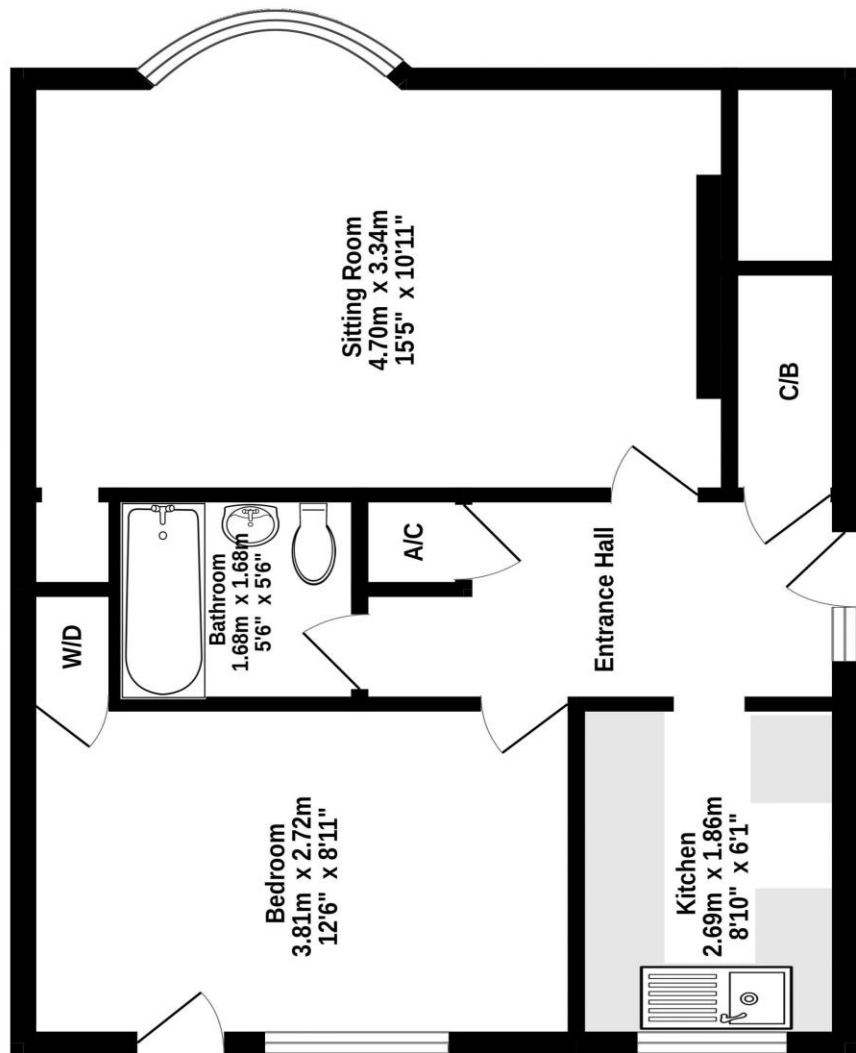




DIRECTIONS: From our High Street office proceed in the Taunton direction passing through the traffic lights taking the first turning right into Buckwell. At the junction go straight ahead, where the property will be seen on the left hand side as indicated by our For Sale board.

Ground Floor



**Wilkie May
& Tuckwood**

Whilst every attempt has been made to ensure the accuracy of the floorplan contained here, measurements of doors, windows, rooms and any other items are approximate and no responsibility is taken for any error, omission or mis-statement. This plan is for illustrative purposes only and should be used as such by any prospective purchaser. The services, systems and appliances shown have not been tested and no guarantee as to their condition or efficiency can be given.
Made with Metropix ©2023

A one double bedroom ground floor apartment of traditional cavity construction with a brick outer leaf under a tiled roof, benefiting from a garage and garden and located within easy walking distance of the town centre. The property is offered to the market with **NO ONWARD CHAIN**.

The accommodation briefly comprises; uPVC front door opens into the hallway with a built in storage cupboard and built in airing cupboard, alongside doors to all rooms. The sitting/dining room lies to the front of the property and provides ample space for all everyday furnishings with a useful alcove and window to the front elevation. The kitchen is fitted with a range of wall and base units with complementary work surfaces and space for appliances.

The sleeping accommodation comprises a double bedroom with built in wardrobe and door to the garden; serviced by the bathroom, fitted with a three piece suite with shower over the bath.

Outside, the property benefits from a lawned garden to the front with a path and steps leading to the front door. The rear garden has been designed with ease of maintenance in mind and is laid to patio with mature shrub borders and a side gate.



- Ground floor apartment
- One double bedroom
- Close walking distance to the town centre
- Garage
- Garden
- **NO ONWARD CHAIN**