

bothams ¹⁸⁷¹



129 Starkholmes Road
Starkholmes, Matlock, DE4 5JA

£1,250



129 Starkholmes Road

Starkholmes, Matlock, DE4 5JA

A rare opportunity to rent this two-bedroom bungalow, nestled in the desirable location of Starkholmes, Matlock and provides easy access to the breathtaking landscapes of the Peak District. The property has been recently renovated throughout and finished to a high standard.

Internally, the property features a newly fitted, contemporary kitchen complete with integrated appliances, including a dishwasher, oven, hob and extractor fan. The property also offers a generously sized lounge, providing ample living space with patio doors leading to the rear garden. The lounge can also accommodate a dining table if required and includes a Samsung 55" flat screen television.

There are two well proportioned double bedrooms and a modern fitted shower room with feature LED mirror.

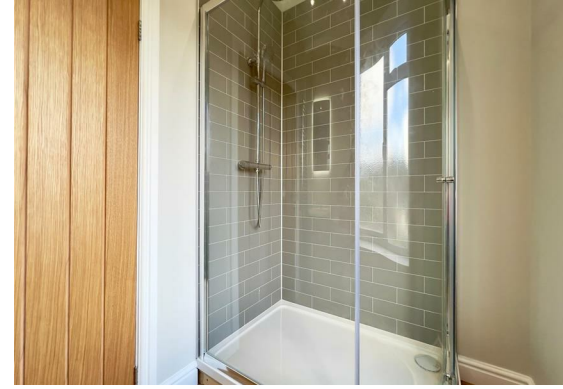
Set within a generous plot the property has an attractive rockery garden to the front and a lawned garden to the rear.

The property also benefits from an off road parking space within close proximity with on road parking spaces available to the front.

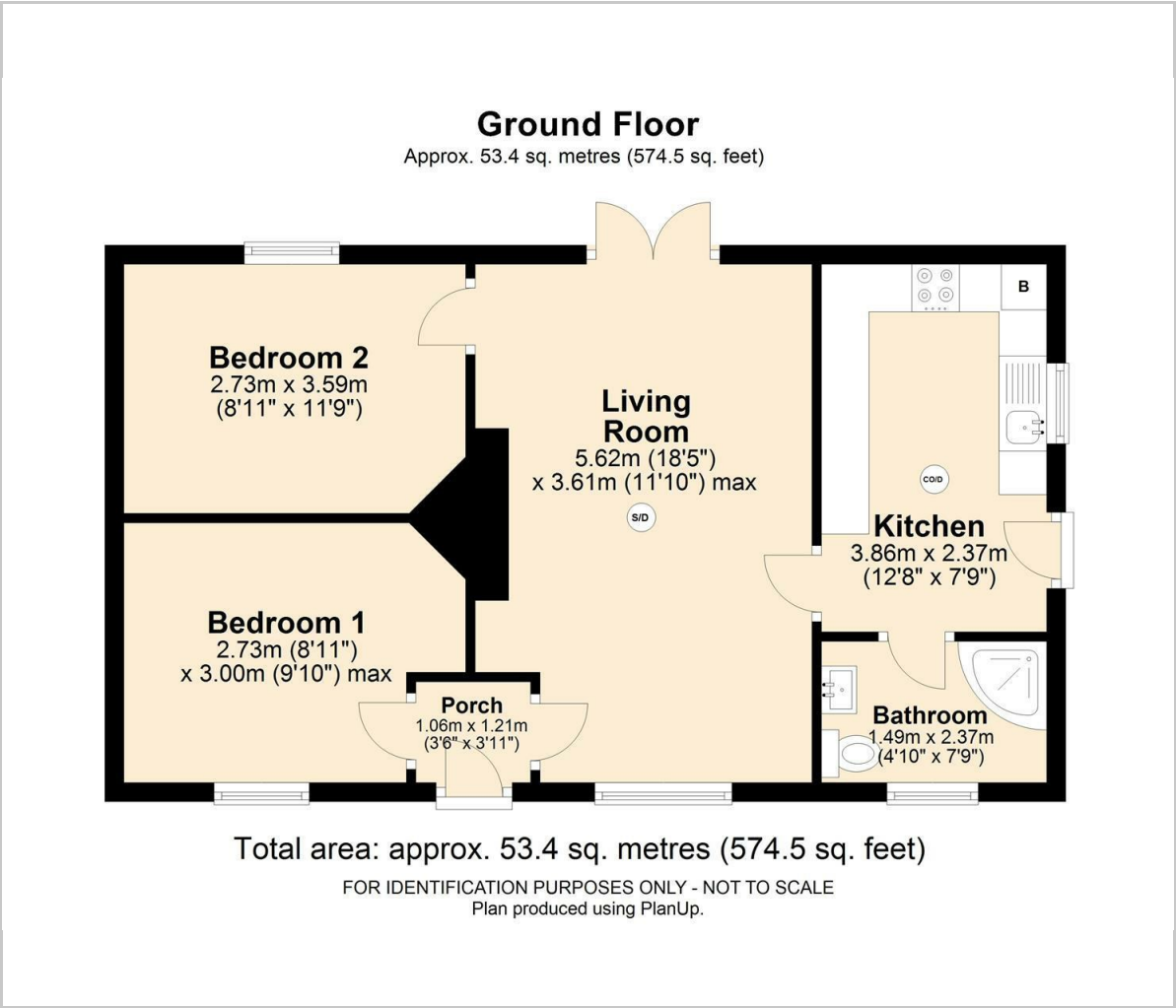
A viewing is highly recommended to truly appreciate the outstanding quality this property presents.

General





Floor Plan



Viewing

Please contact our Chesterfield Residential Office on 01246 233121 if you wish to arrange a viewing appointment for this property or require further information.

These particulars, whilst believed to be accurate are set out as a general outline only for guidance and do not constitute any part of an offer or contract. Intending purchasers should not rely on them as statements of representation of fact, but must satisfy themselves by inspection or otherwise as to their accuracy. No person in this firms employment has the authority to make or give any representation or warranty in respect of the property.

Ravenside House 46 Park Road, Chesterfield, Derbyshire, S40 1XZ
Tel: 01246 233121 Email: enquiries@bothams.co.uk <https://www.bothams.co.uk/>

Area Map



Energy Efficiency Graph

