

bothams <sup>1871</sup>

47 Kirton Road

, Sheffield, S4 7DL

Offers In The Region Of £80,000





## 47 Kirton Road

, Sheffield, S4 7DL

A traditional terrace in the S4 suburb of Sheffield, providing an excellent opportunity to create your ideal home, or an ideal investment opportunity.

Available with no upward chain.

### 47 Kirton Road

### The Accommodation

### Outside

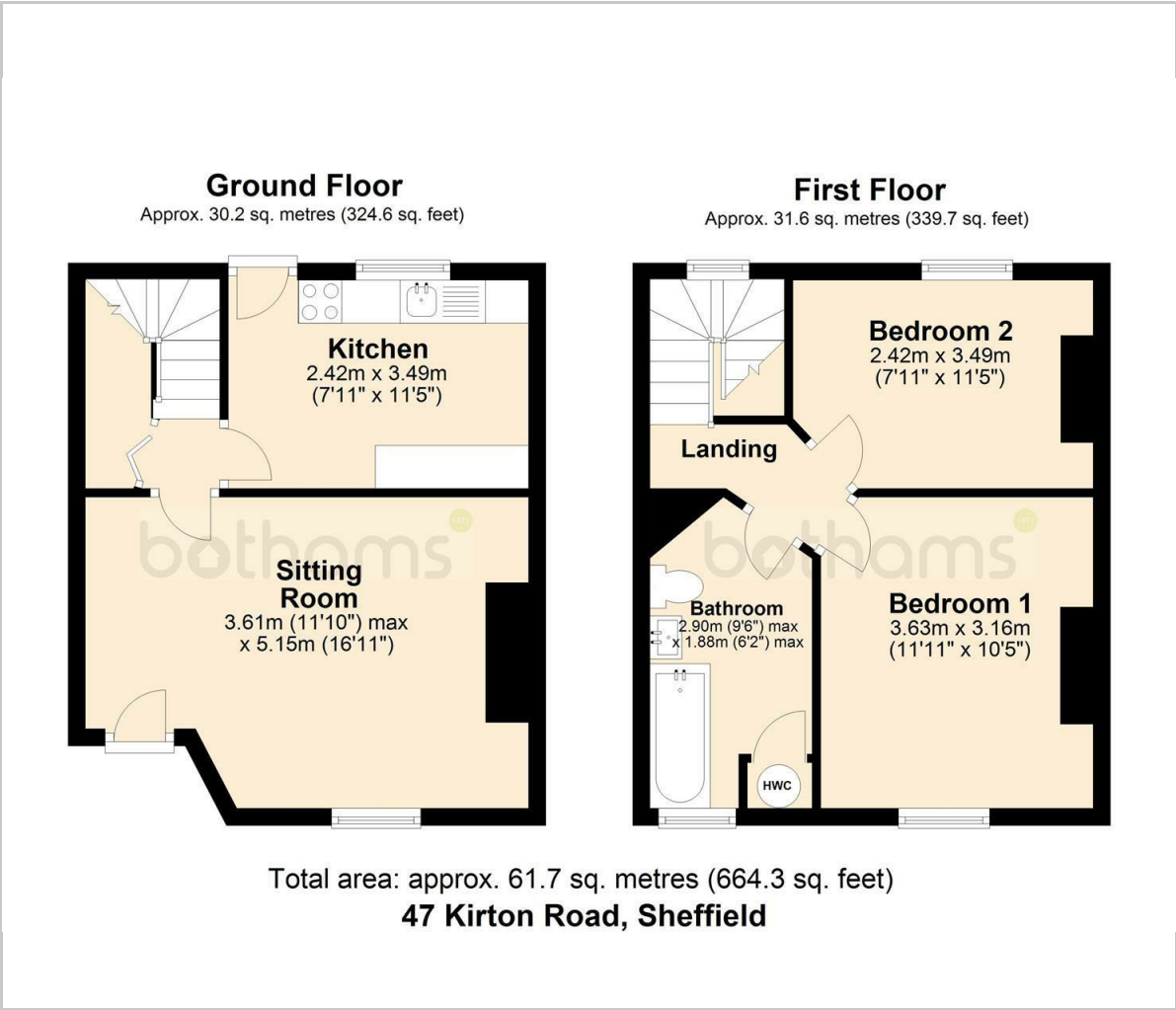
### Material Information







Floor Plan



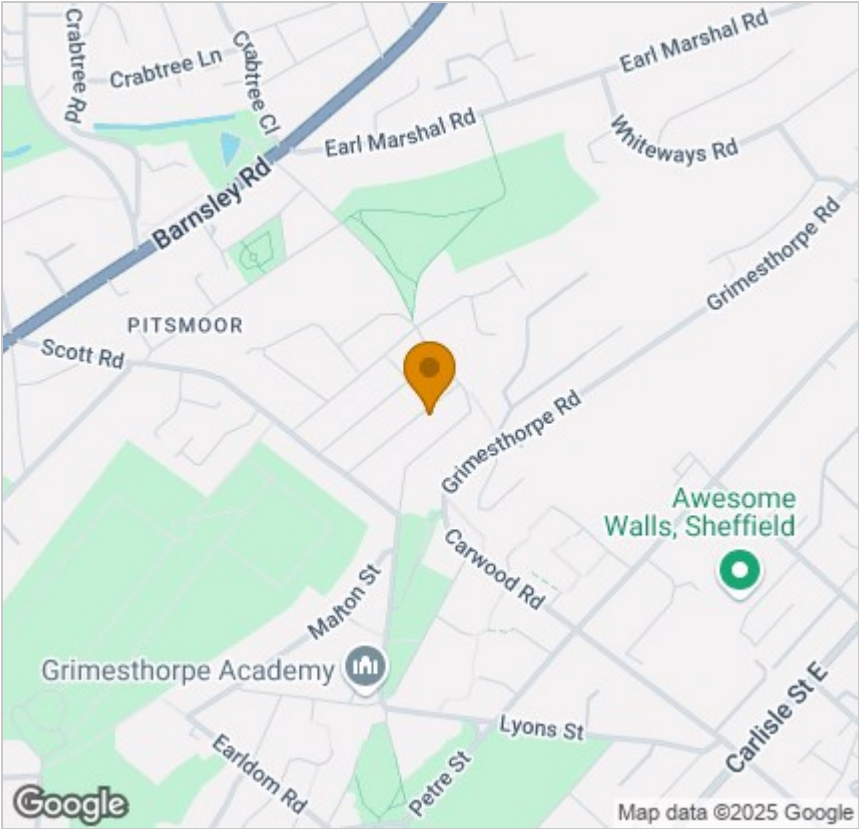
Viewing

Please contact our Chesterfield Residential Office on 01246 233121 if you wish to arrange a viewing appointment for this property or require further information.

These particulars, whilst believed to be accurate are set out as a general outline only for guidance and do not constitute any part of an offer or contract. Intending purchasers should not rely on them as statements of representation of fact, but must satisfy themselves by inspection or otherwise as to their accuracy. No person in this firms employment has the authority to make or give any representation or warranty in respect of the property.

Ravenside House 46 Park Road, Chesterfield, Derbyshire, S40 1XZ  
Tel: 01246 233121 Email: [enquiries@bothams.co.uk](mailto:enquiries@bothams.co.uk) <https://www.bothams.co.uk/>

Area Map



Energy Efficiency Graph

