

bothams <sup>1871</sup>



Annexe, Scarcliffe Hall Farm Main Street

Scarcliffe, Chesterfield, S44 6SZ

£950 Per Calendar Month



## Annexe, Scarcliffe Hall Farm

Scarcliffe, Chesterfield, S44 6SZ

A unique opportunity to rent this two bedroomed cottage, located within the picturesque village of Scarcliffe, Chesterfield.

The property benefits from:

- \*Private driveway entrance to the cottage, providing ample off-road parking.
- \*Spacious rooms throughout, including two double bedrooms.
- \*Substantial character featuring timber beam ceilings.
- \*Part furnished.
- \*Council tax band B

Only from an internal viewing can the character and charm of this beautiful property be fully appreciated.

**Kitchen**

**Lounge**

**Bathroom**

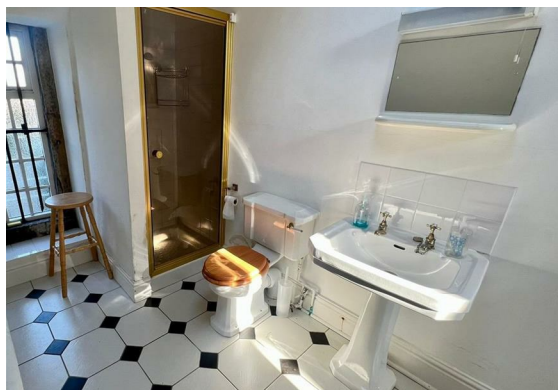
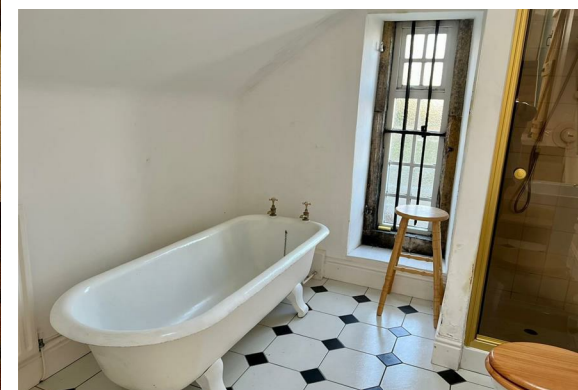
**Bedroom one**

**Bedroom two**

**Additional shower room**

**Outside**

**General**





## Floor Plan



## Viewing

Please contact our Chesterfield Residential Office on 01246 233121 if you wish to arrange a viewing appointment for this property or require further information.

These particulars, whilst believed to be accurate are set out as a general outline only for guidance and do not constitute any part of an offer or contract. Intending purchasers should not rely on them as statements of representation of fact, but must satisfy themselves by inspection or otherwise as to their accuracy. No person in this firm's employment has the authority to make or give any representation or warranty in respect of the property.

Ravenside House 46 Park Road, Chesterfield, Derbyshire, S40 1XZ  
Tel: 01246 233121 Email: [enquiries@bothams.co.uk](mailto:enquiries@bothams.co.uk) <https://www.bothams.co.uk/>

## Area Map



## Energy Efficiency Graph

