



Chiltern Green, West Knighton

Offers Over £330,000

Great opportunity to buy extended semi in West Knighton with views of play area. Porch, hall, lounge, dining room, 4th bedroom/extra reception, wet room, kitchen, 3 bedrooms, shower room. Charming kerb appeal, off-road parking for 4 cars, rear garden. Book a viewing now!

Council Tax band: B

Tenure: Freehold

EPC Energy Efficiency Rating: D





Entrance Porch

Double-glazed windows to the front and side elevations, entered via a double-glazed door providing access to another double-glazed door leading to the hallway.

Hallway

With wood-effect flooring, radiator. Stairs providing access to the first floor landing.

Kitchen 3.82m x 2.00m (12' 6" x 6' 7")

With double glazed window to the front elevation, ceramic tiled flooring, a range of gloss base and wall units, rolled edge laminated work surface, stainless steel sink drainer and mixer tap. Integrated appliances include an inset four ring gas hob, extractor, oven, There is also plumbing and space for a washing machine and a feature chrome ladder radiator.

Lounge 4.99m x 3.36m (16' 4" x 11' 0")

Light and airy living room boasting plenty of natural light coming through the double-glazed window to front elevation, television point, coving to ceiling, wall mounted lights and an opening providing access to the dining room.



Dining Room 2.83m x 2.67m (9' 3" x 8' 9")

Having double-glazed French doors providing views and access to the rear garden, coving to ceiling, a radiator and a door providing access to bedroom four.

Ground Floor Fouth Bedroom 4.79m x 3.18m (15' 9" x 10' 5")

With two double glazed windows to the rear elevation, television point, radiator. Door with access to a downstairs wet room

Ground Floor Wet Room 2.06m x 1.94m (6' 9" x 6' 4")

With corner shower section, low-level WC, wash hand basin, fully tiled walls.

First Floor Landing

With double glazed window to the front elevation.

Bedroom One 3.14m x 3.39m (10' 4" x 11' 1")

Located to the rear of the property, built-in wardrobes, double glazed window to the rear elevation, radiator.

Bedroom Two 3.51m x 2.53m (11' 6" x 8' 4")

Located at the front of the property, laminated flooring, double glazed window, built-in wardrobes and a radiator.

Bedroom Three 2.52m x 2.15m (8' 3" x 7' 1")

With double glazed window to the front elevation and a radiator.

Shower Room 2.18m x 1.80m (7' 2" x 5' 11")

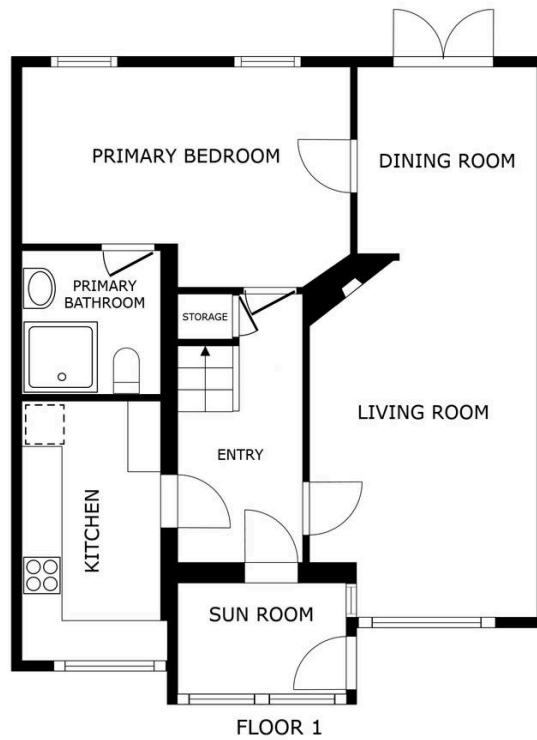
With obscured double glazed window to the rear elevation. Shower cubicle with shower head over, low-level WC, wash hand basin, tiled walls and a radiator.

Garden

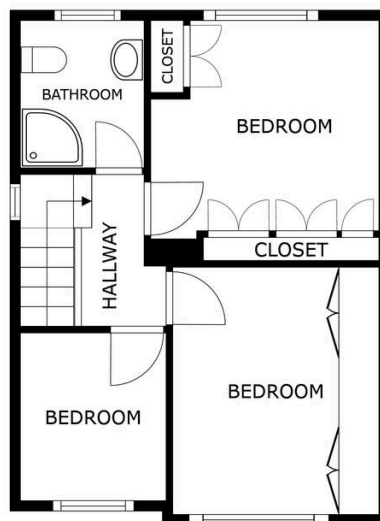
With paved area and lawn area and fence borders.

Driveway

Block paved driveway for multiple cars.



SIZES AND DIMENSIONS ARE APPROXIMATE, ACTUAL MAY VARY.



SIZES AND DIMENSIONS ARE APPROXIMATE, ACTUAL MAY VARY.



We'll keep you moving...



We must inform all prospective purchasers that the measurements are taken by an electronic take and are provided as a guide only and they should not be used as accurate measurements. We have not tested any mains services, gas or electric appliances, or fixtures and fittings mentioned in these details, therefore, prospective purchasers should satisfy themselves before committing to purchase. Intending purchasers must satisfy themselves by inspection or otherwise to the correctness of the statements contained in these particulars. Knightsbridge Estate Agents (nor any person in their employment) has any authority to make any representation or warranty in relation to the property. The floor plans are not to scale, and are intended for use as a guide to the layout of the property only. They should not be used for any other purpose. We are required by law to conduct anti-money laundering checks on all those selling or buying a property. Whilst we retain responsibility for ensuring checks and any ongoing monitoring are carried out correctly, the initial checks are carried out on our behalf by Lifetime Legal who will contact you once you have agreed to instruct us in your sale or had an offer accepted on a property you wish to buy. The cost of these checks is £60 (incl. VAT), which covers the cost of obtaining relevant data and any manual checks and monitoring which might be required. This fee will need to be paid by you in advance of us publishing your property (in the case of a vendor) or issuing a memorandum of sale (in the case of a buyer), directly to Lifetime Legal, and is non-refundable. We will receive some of the fee taken by Lifetime Legal to compensate for its role in the provision of these checks.