

Guilford Drive, Wigston

In Excess of £355,000

A BEAUTIFUL and EXTENDED semi-detached family home with a CONTEMPORARY theme throughout. The accommodation includes a modern style fitted dining kitchen and THREE BEDROOMS.

Council Tax band: C

Tenure: Freehold

EPC Energy Efficiency Rating: C





Entrance Hall

With double glazed door to the front elevation, double glazed door to the side elevation, marble tiled floor, stairs to first floor, under stairs storage cupboard, radiator.

Lounge

27' 3" x 11' 2" (8.30m x 3.41m)

With double glazed bay window to the front elevation, door leading to the fitted dining kitchen, ceiling coving, TV point, radiator.

Extended Fitted Dining Kitchen

18' 6" x 16' 10" (5.65m x 5.12m)

With double glazed window to the side elevation, double glazed French doors to the rear elevation, two double glazed skylight windows, marble tiled floor, part tiled walls, a range of wall and base units with work surface over, sink and drainer unit, inset five ring gas hob, integrated double oven, extractor hood, integrated dishwasher, space for fridge freezer, TV point.



Ground Floor Shower Room

6' 8" x 3' 3" (2.04m x 0.98m)

With shower cubicle, low-level WC, wash hand basin with storage below, tiled walls, tiled floor.

First Floor Landing

With double glazed window to the side elevation, loft access.

Bedroom One

13' 10" x 8' 9" (4.21m x 2.67m)

With double glazed bay window to the front elevation, built-in wardrobes, radiator.

Bedroom Two

13' 2" x 8' 7" (4.01m x 2.62m)

With double glazed window to the rear elevation, built-in wardrobes, radiator.

Bedroom Three

8' 0" x 6' 9" (2.43m x 2.05m)

With double glazed window to the front elevation, radiator.

Bathroom

6' 8" x 5' 6" (2.02m x 1.67m)

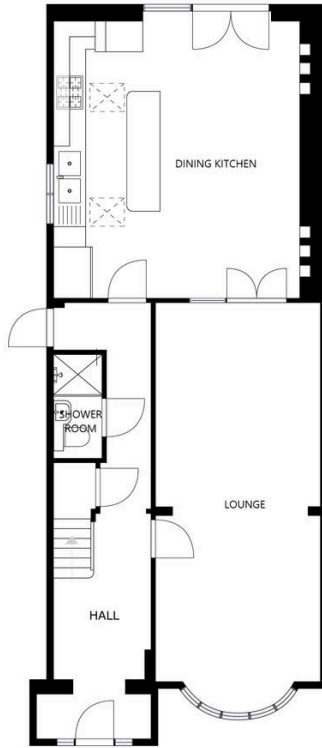
With double glazed window to the rear elevation, bath, low-level WC, wash hand basin, tiled walls, tiled floor, chrome ladder towel rail/radiator.

Rear Garden

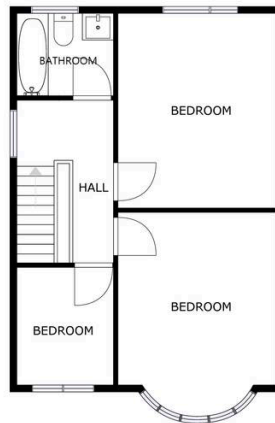
With paved patio seating area, lawn, fencing to perimeter.

Driveway

1 Vehicle.



FLOOR 1



FLOOR 2



We'll keep you moving...



We must inform all prospective purchasers that the measurements are taken by an electronic take and are provided as a guide only and they should not be used as accurate measurements. We have not tested any mains services, gas or electric appliances, or fixtures and fittings mentioned in these details, therefore, prospective purchasers should satisfy themselves before committing to purchase. Intending purchasers must satisfy themselves by inspection or otherwise to the correctness of the statements contained in these particulars. Knightsbridge Estate Agents (nor any person in their employment) has any authority to make any representation or warranty in relation to the property. The floor plans are not to scale, and are intended for use as a guide to the layout of the property only. They should not be used for any other purpose. We are required by law to conduct anti-money laundering checks on all those selling or buying a property. Whilst we retain responsibility for ensuring checks and any ongoing monitoring are carried out correctly, the initial checks are carried out on our behalf by Lifetime Legal who will contact you once you have agreed to instruct us in your sale or had an offer accepted on a property you wish to buy. The cost of these checks is £60 (incl. VAT), which covers the cost of obtaining relevant data and any manual checks and monitoring which might be required. This fee will need to be paid by you in advance of us publishing your property (in the case of a vendor) or issuing a memorandum of sale (in the case of a buyer), directly to Lifetime Legal, and is non-refundable. We will receive some of the fee taken by Lifetime Legal to compensate for its role in the provision of these checks.