



Gold Hill Court, Wigston

£220,000

A MODERN BUILT end town house creating an ideal first time purchase or opportunity to downsize, this attractive home includes a kitchen diner with BUILT-IN APPLIANCES and two double bedrooms.

Council Tax band: B

Tenure: Freehold

EPC Energy Efficiency Rating: B





Entrance Hall

Via a double glazed front door, with wood effect laminate floor, radiator.

Kitchen Diner

10' 8" x 8' 4" (3.25m x 2.53m)

With double glazed window to the front elevation, tiled floor, part tiled walls, a range of wall and base units with work surface over, stainless steel sink, drainer and mixer tap, inset four ring gas hob and oven, extractor hood, glazed splash back, integrated fridge/freezer, plumbing for washing machine, spotlights, radiator.

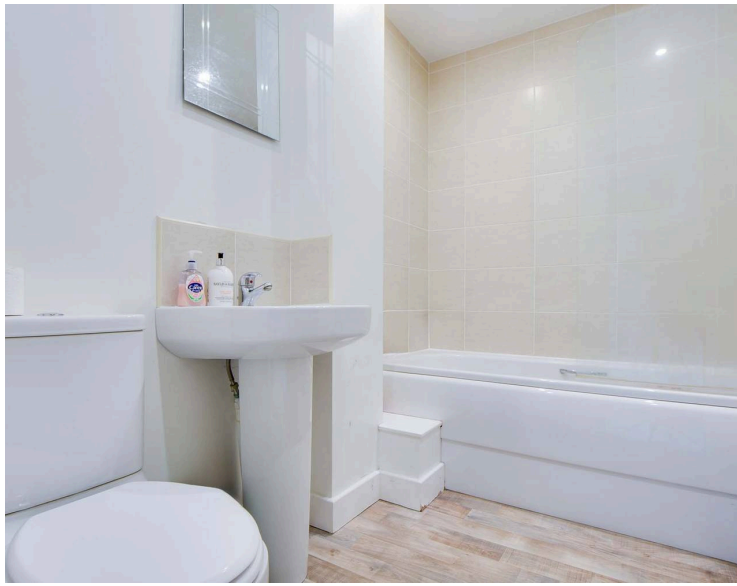
Lounge

12' 9" x 12' 1" (3.88m x 3.68m)

With double glazed French doors to the rear garden, wood effect laminate floor, TV point, stairs to first floor, radiator.

Ground Floor WC

With low-level WC, wash hand basin, part tiled walls, radiator.



First Floor Landing

With loft access leading to partly boarded loft.

Bedroom One

12' 0" x 10' 8" (3.66m x 3.26m)

With double glazed window to the front elevation, radiator.

Bedroom Two

12' 0" x 7' 8" (3.67m x 2.33m)

With double glazed window to the rear elevation, radiator.

Bathroom

8' 5" x 5' 7" (2.56m x 1.71m)

Having bath with mixer shower tap, low-level WC, wash hand basin, part tiled walls, radiator.

Front Garden

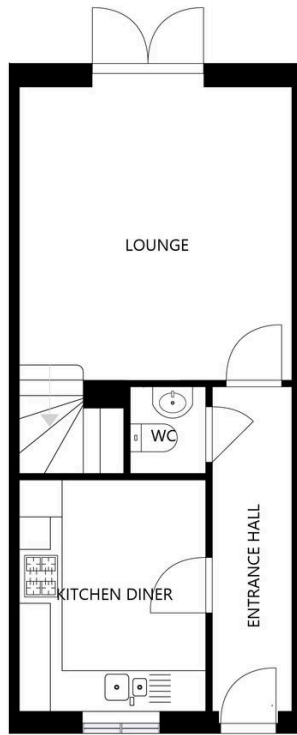
A low maintenance frontage with gravelled area, paved area, pathway.

Rear Garden

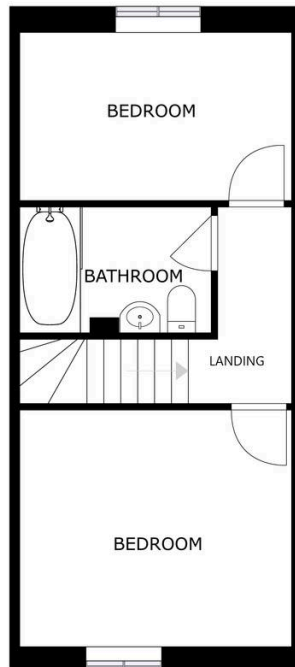
A low maintenance rear garden with paved patio area, gravelled area, lawn, gate to side access, fencing to perimeter.

Parking

Allocated off road parking situated to the front.



FLOOR 1



FLOOR 2



We'll keep you moving...



We must inform all prospective purchasers that the measurements are taken by an electronic take and are provided as a guide only and they should not be used as accurate measurements. We have not tested any mains services, gas or electric appliances, or fixtures and fittings mentioned in these details, therefore, prospective purchasers should satisfy themselves before committing to purchase. Intending purchasers must satisfy themselves by inspection or otherwise to the correctness of the statements contained in these particulars. Knightsbridge Estate Agents (nor any person in their employment) has any authority to make any representation or warranty in relation to the property. The floor plans are not to scale, and are intended for use as a guide to the layout of the property only. They should not be used for any other purpose. We are required by law to conduct anti-money laundering checks on all those selling or buying a property. Whilst we retain responsibility for ensuring checks and any ongoing monitoring are carried out correctly, the initial checks are carried out on our behalf by Lifetime Legal who will contact you once you have agreed to instruct us in your sale or had an offer accepted on a property you wish to buy. The cost of these checks is £60 (incl. VAT), which covers the cost of obtaining relevant data and any manual checks and monitoring which might be required. This fee will need to be paid by you in advance of us publishing your property (in the case of a vendor) or issuing a memorandum of sale (in the case of a buyer), directly to Lifetime Legal, and is non-refundable. We will receive some of the fee taken by Lifetime Legal to compensate for its role in the provision of these checks.