

In Excess of Penney Close, Wigston

£165,000

A well-presented QUARTER HOUSE near WIGSTON town centre, ideal for first-time buyers or investors, with a bright living space, double bedroom, and low-maintenance garden.

Council Tax band: A

Tenure: Freehold

EPC Energy Efficiency Rating: D





Porch

Providing access to:

Living Room

15' 11" x 8' 11" (4.85m x 2.72m)

With a double-glazed window to the front elevation, double-glazed French doors to the garden, electric fire with surround, wood effect flooring, TV point, stairs to the first floor landing and wall-mounted storage heater.

Kitchen

With a double-glazed window to the side elevation, wood effect flooring, a sink and drainer unit with a range of wall and base units with work surfaces over, tiled splash backs, space for a free-standing hob and double oven, extractor hood, plumbing for an appliance and space for a fridge.

Bedroom

13' 10" x 9' 1" (4.22m x 2.77m)

With a double-glazed window to the front elevation and built-in wardrobes.



Shower Room

9' 3" x 6' 7" (2.83m x 2.00m)

With a double-glazed window to the side elevation, shower cubicle with shower head over, WC, wash hand basin, tiled splashbacks, heated wall-mounted feature towel rail and an electric wall-mounted heater.

Front Garden

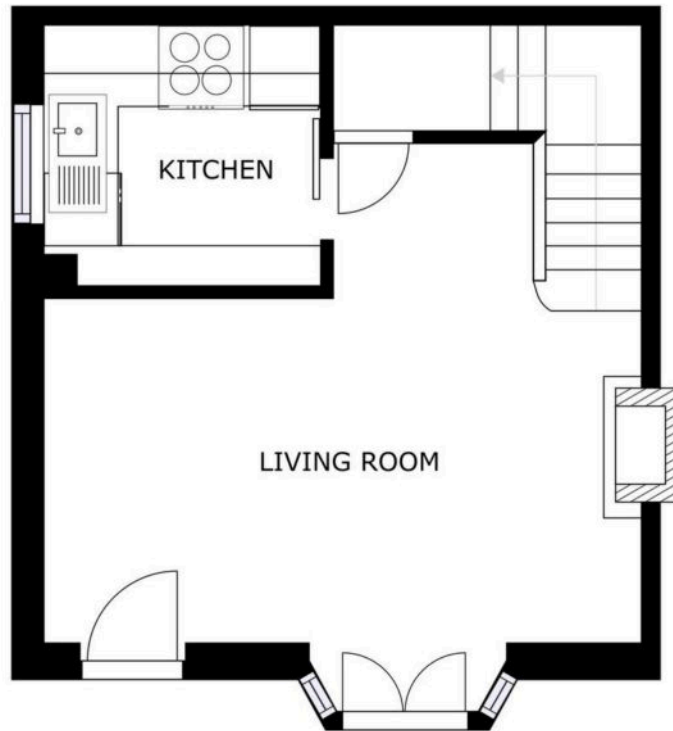
Paved pathway to the side of the property leading to the front door with gated access.

Rear Garden

A low-maintenance slabbed patio rear garden with a garden shed and well-maintained fence perimeter borders.

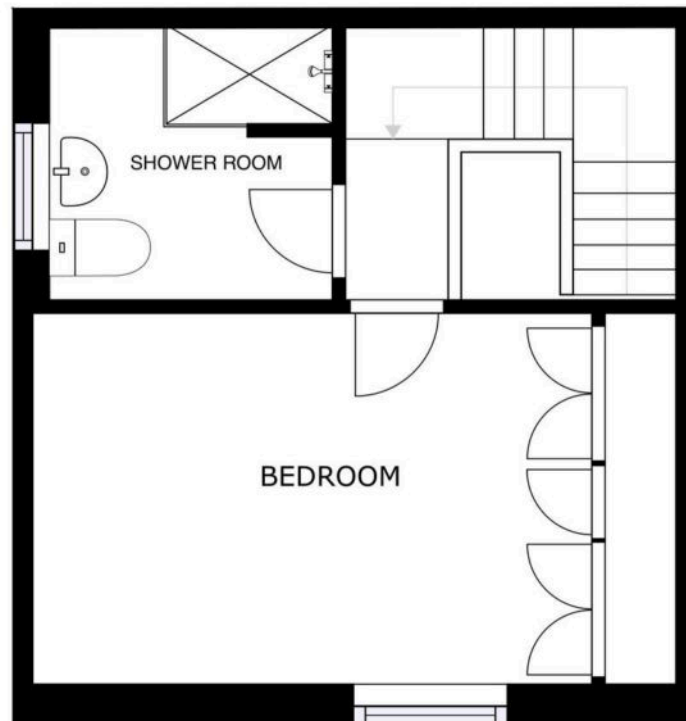
Allocated Parking

1 Vehicle



FLOOR 1

SIZES AND DIMENSIONS ARE APPROXIMATE, ACTUAL MAY VARY.



FLOOR 2

SIZES AND DIMENSIONS ARE APPROXIMATE, ACTUAL MAY VARY.



We'll keep you moving...



We must inform all prospective purchasers that the measurements are taken by an electronic take and are provided as a guide only and they should not be used as accurate measurements. We have not tested any mains services, gas or electric appliances, or fixtures and fittings mentioned in these details, therefore, prospective purchasers should satisfy themselves before committing to purchase. Intending purchasers must satisfy themselves by inspection or otherwise to the correctness of the statements contained in these particulars. Knightsbridge Estate Agents (nor any person in their employment) has any authority to make any representation or warranty in relation to the property. The floor plans are not to scale, and are intended for use as a guide to the layout of the property only. They should not be used for any other purpose. We are required by law to conduct anti-money laundering checks on all those selling or buying a property. Whilst we retain responsibility for ensuring checks and any ongoing monitoring are carried out correctly, the initial checks are carried out on our behalf by Lifetime Legal who will contact you once you have agreed to instruct us in your sale or had an offer accepted on a property you wish to buy. The cost of these checks is £60 (incl. VAT), which covers the cost of obtaining relevant data and any manual checks and monitoring which might be required. This fee will need to be paid by you in advance of us publishing your property (in the case of a vendor) or issuing a memorandum of sale (in the case of a buyer), directly to Lifetime Legal, and is non-refundable. We will receive some of the fee taken by Lifetime Legal to compensate for its role in the provision of these checks.