

Grange Road, Wigston

Offers in Excess of £285,000

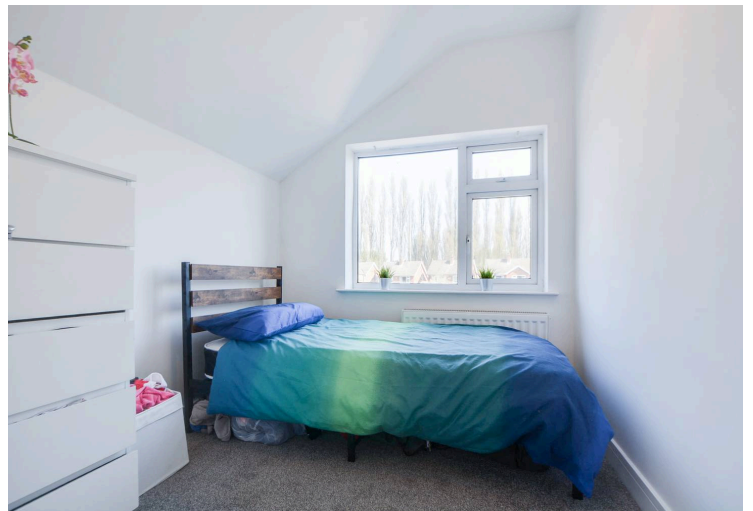
An EXTENDED semi-detached family home located a short distance of KNIGHTON PARK. Versatile accommodation over two floors with an extended contemporary style fitted dining kitchen.

Council Tax band: B

Tenure: Freehold

EPC Energy Efficiency Rating: D





Entrance Hall

With a double glazed front door, tiled floor, stairs to first floor, radiator.

Lounge

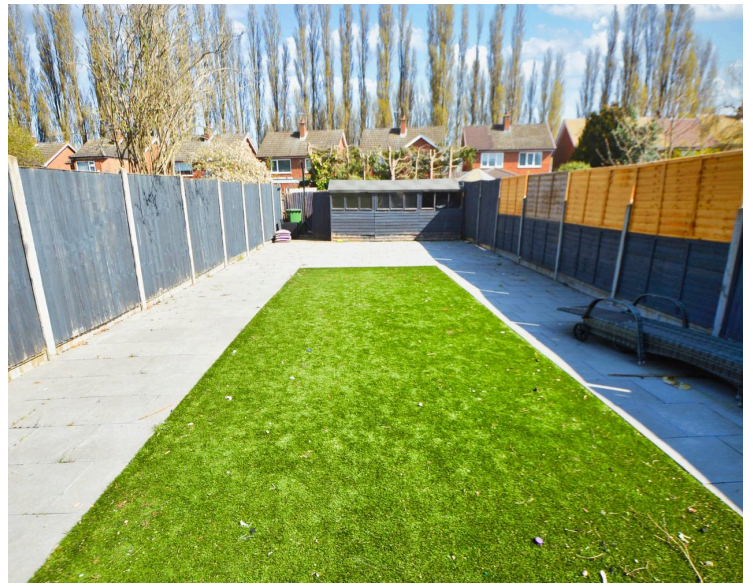
18' 9" x 10' 11" (5.71m x 3.32m)

With double glazed bay window to the front elevation, double glazed French doors leading to dining kitchen, TV point, radiator.

Extended Fitted Dining Kitchen

14' 9" x 15' 3" (4.50m x 4.65m)

Measurement maximises to 16' 9" (5.13m). With double glazed French doors to the rear elevation, double glazed window to the rear elevation, a range of wall and base units with work surface, sink, drainer and mixer tap, part tiled walls, tiled floor, inset four ring gas hob and oven with extractor hood over, plumbing for washing machine, spotlights, radiator.



First Floor Landing

With double glazed window to the side elevation.

Bedroom One

13' 0" x 10' 11" (3.97m x 3.33m)

With double glazed window to the front elevation, chimney breast, TV point, radiator.

Bedroom Two

12' 0" x 9' 6" (3.65m x 2.89m)

With double glazed window to the rear elevation, TV point, radiator.

Bedroom Three

8' 6" x 7' 6" (2.58m x 2.29m)

With double glazed window to the rear elevation, radiator.

Bathroom

6' 0" x 5' 9" (1.84m x 1.75m)

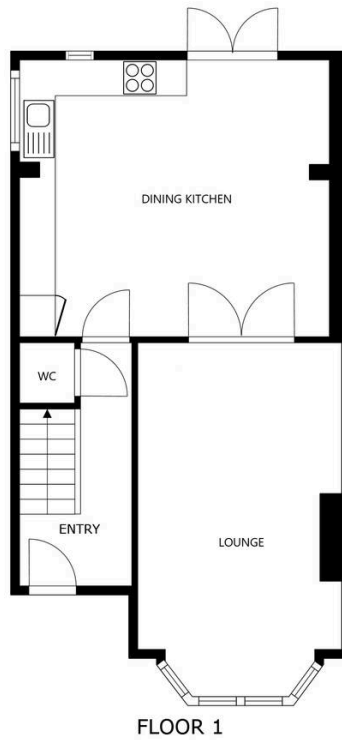
With double glazed window to the front elevation, bath with shower over and shower screen low-level WC, wash hand basin with storage below, tiled walls, chrome towel rail/radiator.

Rear Garden

A lovely rear garden with paved patio seating area, AstroTurf lawn, fencing to perimeter, shed.

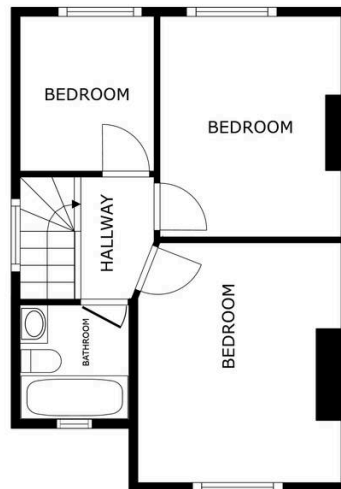
Driveway

For approx two vehicles.



FLOOR 1

SIZES AND DIMENSIONS ARE APPROXIMATE, ACTUAL MAY VARY.



FLOOR 2

SIZES AND DIMENSIONS ARE APPROXIMATE, ACTUAL MAY VARY.



We'll keep you moving...



We must inform all prospective purchasers that the measurements are taken by an electronic take and are provided as a guide only and they should not be used as accurate measurements. We have not tested any mains services, gas or electric appliances, or fixtures and fittings mentioned in these details, therefore, prospective purchasers should satisfy themselves before committing to purchase. Intending purchasers must satisfy themselves by inspection or otherwise to the correctness of the statements contained in these particulars. Knightsbridge Estate Agents (nor any person in their employment) has any authority to make any representation or warranty in relation to the property. The floor plans are not to scale, and are intended for use as a guide to the layout of the property only. They should not be used for any other purpose. We are required by law to conduct anti-money laundering checks on all those selling or buying a property. Whilst we retain responsibility for ensuring checks and any ongoing monitoring are carried out correctly, the initial checks are carried out on our behalf by Lifetime Legal who will contact you once you have agreed to instruct us in your sale or had an offer accepted on a property you wish to buy. The cost of these checks is £60 (incl. VAT), which covers the cost of obtaining relevant data and any manual checks and monitoring which might be required. This fee will need to be paid by you in advance of us publishing your property (in the case of a vendor) or issuing a memorandum of sale (in the case of a buyer), directly to Lifetime Legal, and is non-refundable. We will receive some of the fee taken by Lifetime Legal to compensate for its role in the provision of these checks.