



Crossleys, Fleckney

In Excess of £315,000

An EXTENDED three bedroom DETACHED family home located in Fleckney. To the rear is a paved and lawn rear garden alongside ample off road parking for FOUR VEHICLES and garage to the front.

Council Tax band: C

Tenure: Freehold





Entrance Hall

Via double glazed door with double glazed window to the front elevation, door to garage, dado rail, stairs to first floor, radiator.

Lounge Diner

22' 4" x 14' 4" (6.80m x 4.37m)

With double glazed patio doors to the rear garden, double glazed patio doors to the conservatory, serving hatch, TV point, two radiators.

Conservatory

11' 6" x 11' 2" (3.50m x 3.40m)

A double glazed conservatory with double glazed French doors to the rear garden, power points, radiator.



Extended Fitted Dining Kitchen

19' 0" x 10' 5" (5.79m x 3.18m)

Maximum measurements. With double glazed window to the front elevation, double glazed door to the side elevation, quarry effect ceramic tiled floor, a range of wall and base units with work surface over, stainless steel sink, drainer and mixer tap, part tiled walls, space for gas cooker, extractor hood, space for fridge freezer, spotlights, radiator.

Ground Floor WC

With single glazed window to the side elevation, low-level WC, wash hand basin, part tiled walls.

First Floor Landing

With access to the following rooms:

Bedroom One

14' 1" x 10' 1" (4.28m x 3.08m)

With double glazed window to the rear elevation, built-in wardrobes, radiator.

Bedroom Two

11' 11" x 10' 6" (3.63m x 3.19m)

With double glazed window to the front elevation, built-in wardrobes, spotlights, radiator.

Bedroom Three

13' 2" x 8' 0" (4.01m x 2.44m)

Maximum measurement. With double glazed window to the rear elevation, built-in wardrobes, radiator.

Shower Room

10' 2" x 5' 11" (3.11m x 1.80m)

With double glazed window to the front elevation, shower cubicle, low-level WC, wash hand basin, part tiled walls, chrome ladder towel rail/radiator.

Rear Garden

With paved patio seating area, lawn, flowerbeds and shrubs, fencing to perimeter, shed.

Parking 4 Vehicles

Providing off road parking.

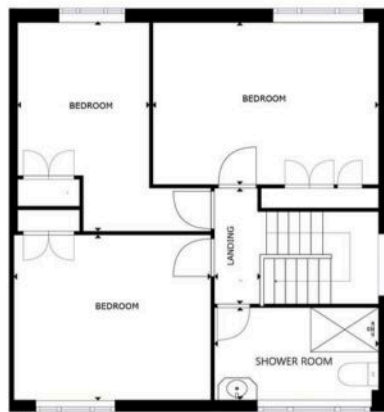
Garage 1 Vehicle

With up and over door to the front elevation.



FLOOR 1

GROSS INTERNAL AREA
FLOOR 1: 87 m², FLOOR 2: 52 m²
TOTAL: 140 m²
SIZES AND DIMENSIONS ARE APPROXIMATE, ACTUAL MAY VARY.



FLOOR 2

FLOOR 1

GROSS INTERNAL AREA
FLOOR 1: 87 m², FLOOR 2: 52 m²
TOTAL: 140 m²
SIZES AND DIMENSIONS ARE APPROXIMATE, ACTUAL MAY VARY.



We'll keep you moving...



We must inform all prospective purchasers that the measurements are taken by an electronic take and are provided as a guide only and they should not be used as accurate measurements. We have not tested any mains services, gas or electric appliances, or fixtures and fittings mentioned in these details, therefore, prospective purchasers should satisfy themselves before committing to purchase. Intending purchasers must satisfy themselves by inspection or otherwise to the correctness of the statements contained in these particulars. Knightsbridge Estate Agents (nor any person in their employment) has any authority to make any representation or warranty in relation to the property. The floor plans are not to scale, and are intended for use as a guide to the layout of the property only. They should not be used for any other purpose. We are required by law to conduct anti-money laundering checks on all those selling or buying a property. Whilst we retain responsibility for ensuring checks and any ongoing monitoring are carried out correctly, the initial checks are carried out on our behalf by Lifetime Legal who will contact you once you have agreed to instruct us in your sale or had an offer accepted on a property you wish to buy. The cost of these checks is £60 (incl. VAT), which covers the cost of obtaining relevant data and any manual checks and monitoring which might be required. This fee will need to be paid by you in advance of us publishing your property (in the case of a vendor) or issuing a memorandum of sale (in the case of a buyer), directly to Lifetime Legal, and is non-refundable. We will receive some of the fee taken by Lifetime Legal to compensate for its role in the provision of these checks.