

Vernon Road, Aylestone

In Excess of £190,000

Well-presented period terrace on VERNON ROAD. Offers two reception rooms, a kitchen, two DOUBLE bedrooms, shower room, and patio garden. Contact our Wigston Office to view.

Council Tax band: A

Tenure: Freehold

EPC Energy Efficiency Rating: D





Reception Room One

11' 3" x 10' 11" (3.42m x 3.34m)

With a double-glazed window to the front elevation, a double-glazed door to the front elevation, wooden flooring, chimney breast, coving to the ceiling, a picture rail and a radiator.

Reception Room Two

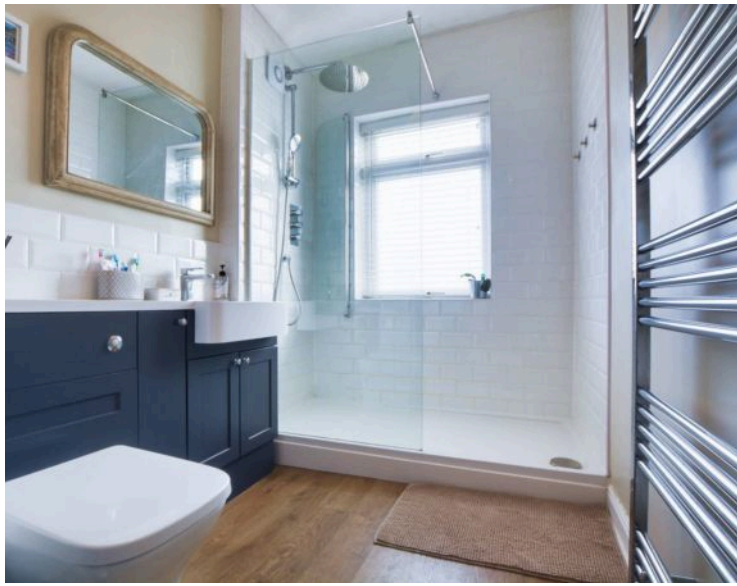
11' 8" x 11' 1" (3.56m x 3.37m)

With a double-glazed window to the rear elevation, a chimney breast with an electric fire, fire surround and hearth, coving to the ceiling, a TV point and a radiator.

Kitchen

9' 6" x 5' 10" (2.89m x 1.79m)

With a double-glazed window to the side elevation, double-glazed door to the rear garden, a sink and drainer unit with a range of wall and base units with work surfaces over, space for a freestanding gas hob and double oven, space for a fridge freezer, space for a washing machine and a radiator.



First Floor Landing

Bedroom One

12' 6" x 11' 3" (3.82m x 3.44m)

With a double-glazed window to the front elevation, wood effect flooring, chimney breast, picture rail, TV point and a radiator.

Bedroom Two

11' 9" x 9' 9" (3.58m x 2.98m)

With a double-glazed window to the rear elevation, wood effect flooring, chimney breast, picture rail, over-stairs cupboard and a radiator.

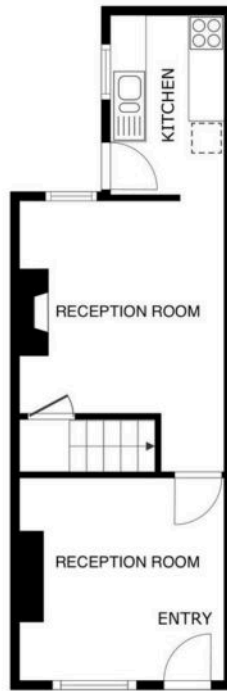
Shower Room

9' 2" x 5' 10" (2.80m x 1.79m)

With a double-glazed window to the rear elevation, a double-shower cubicle with shower head over, shower screen, WC, wash hand basin, a cupboard and a wall-mounted heated towel rail.

Rear Garden

A rear patio garden with a range of plant and shrub borders and well maintained fenced perimeters.



FLOOR 1

SIZES AND DIMENSIONS ARE APPROXIMATE, ACTUAL MAY VARY.



FLOOR 2

SIZES AND DIMENSIONS ARE APPROXIMATE, ACTUAL MAY VARY.



We'll keep you moving...



We must inform all prospective purchasers that the measurements are taken by an electronic take and are provided as a guide only and they should not be used as accurate measurements. We have not tested any mains services, gas or electric appliances, or fixtures and fittings mentioned in these details, therefore, prospective purchasers should satisfy themselves before committing to purchase. Intending purchasers must satisfy themselves by inspection or otherwise to the correctness of the statements contained in these particulars. Knightsbridge Estate Agents (nor any person in their employment) has any authority to make any representation or warranty in relation to the property. The floor plans are not to scale, and are intended for use as a guide to the layout of the property only. They should not be used for any other purpose. We are required by law to conduct anti-money laundering checks on all those selling or buying a property. Whilst we retain responsibility for ensuring checks and any ongoing monitoring are carried out correctly, the initial checks are carried out on our behalf by Lifetime Legal who will contact you once you have agreed to instruct us in your sale or had an offer accepted on a property you wish to buy. The cost of these checks is £60 (incl. VAT), which covers the cost of obtaining relevant data and any manual checks and monitoring which might be required. This fee will need to be paid by you in advance of us publishing your property (in the case of a vendor) or issuing a memorandum of sale (in the case of a buyer), directly to Lifetime Legal, and is non-refundable. We will receive some of the fee taken by Lifetime Legal to compensate for its role in the provision of these checks.