



Maris Lane, Aylestone

£290,000

With accommodation spread over THREE FLOORS, this MODERN-BUILT townhouse is approximately 6 years old located in the residential suburb of Aylestone.

Council Tax band: B

Tenure: Freehold

EPC Energy Efficiency Rating: B





Entrance Hall

With stairs to first floor, radiator.

Sitting Room

12' 4" x 11' 2" (3.76m x 3.40m)

With double glazed window to the front elevation, radiator.

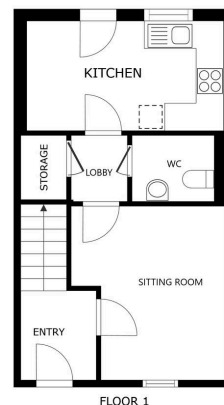
Lobby

With storage cupboard.

Ground Floor WC

5' 8" x 4' 8" (1.73m x 1.42m)

With low-level WC, pedestal wash hand basin, radiator.



SIZES AND DIMENSIONS ARE APPROXIMATE, ACTUAL MAY VARY

Matterport

Kitchen Dining Room

With double glazed door and window to the rear elevation, stainless steel sink and drainer unit with a range of wall and base units with work surfaces over, built-in oven and gas hob with stainless steel chimney hood over, plumbing for washing machine, plumbing for dishwasher, cupboard housing boiler, vinyl floor, inset ceiling spotlights, radiator.

First Floor Landing

With access to the following rooms:

Bedroom One

14' 8" x 10' 0" (4.47m x 3.05m)

With two double glazed windows to the rear elevation, radiator.

Bedroom Two

14' 9" x 9' 0" (4.50m x 2.74m)

Measurement narrowing to 7'5". With two double glazed windows to the front elevation, radiator.

Bathroom

7' 4" x 6' 6" (2.24m x 1.98m)

Having bath with shower over, pedestal wash hand basin low-level WC, extractor fan, inset ceiling spotlights, radiator.

Second Floor Landing

With storage cupboard.

Bedroom Three

17' 10" x 10' 10" (5.44m x 3.30m)

With double glazed window to the front elevation, loft access, radiator.

En-Suite Shower Room

5' 7" x 5' 0" (1.70m x 1.52m)

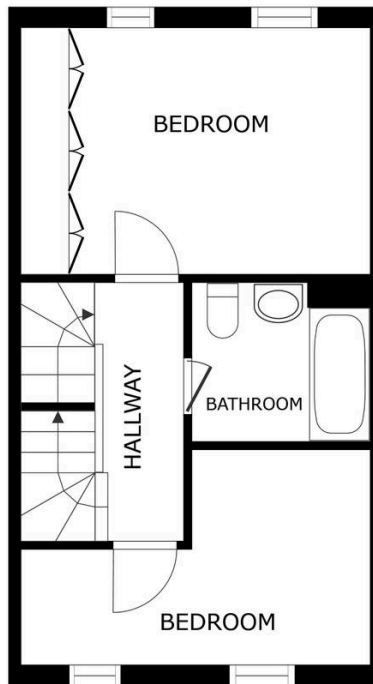
With tiled shower cubicle, pedestal wash hand basin, low-level WC, extractor fan, heated towel rail.

Rear Garden

With paved patio area, lawn, outside tap, outside lighting, fencing to perimeter.

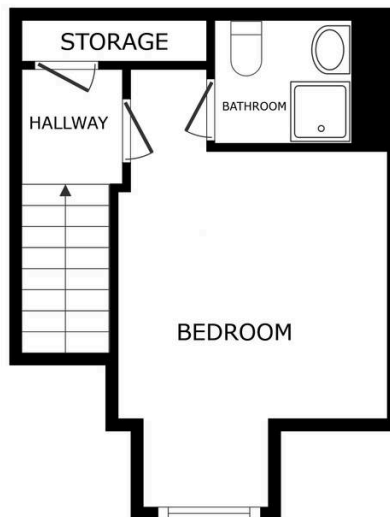
Driveway 2 vehicles

With electric vehicle charger.



FLOOR 2

SIZES AND DIMENSIONS ARE APPROXIMATE, ACTUAL MAY VARY.



FLOOR 3

SIZES AND DIMENSIONS ARE APPROXIMATE, ACTUAL MAY VARY.



We'll keep you moving...



We must inform all prospective purchasers that the measurements are taken by an electronic take and are provided as a guide only and they should not be used as accurate measurements. We have not tested any mains services, gas or electric appliances, or fixtures and fittings mentioned in these details, therefore, prospective purchasers should satisfy themselves before committing to purchase. Intending purchasers must satisfy themselves by inspection or otherwise to the correctness of the statements contained in these particulars. Knightsbridge Estate Agents (nor any person in their employment) has any authority to make any representation or warranty in relation to the property. The floor plans are not to scale, and are intended for use as a guide to the layout of the property only. They should not be used for any other purpose. We are required by law to conduct anti-money laundering checks on all those selling or buying a property. Whilst we retain responsibility for ensuring checks and any ongoing monitoring are carried out correctly, the initial checks are carried out on our behalf by Lifetime Legal who will contact you once you have agreed to instruct us in your sale or had an offer accepted on a property you wish to buy. The cost of these checks is £60 (incl. VAT), which covers the cost of obtaining relevant data and any manual checks and monitoring which might be required. This fee will need to be paid by you in advance of us publishing your property (in the case of a vendor) or issuing a memorandum of sale (in the case of a buyer), directly to Lifetime Legal, and is non-refundable. We will receive some of the fee taken by Lifetime Legal to compensate for its role in the provision of these checks.