

Coleman Road, Fleckney

Offers Over £350,000

Occupying a CORNER PLOT with ample SCOPE FOR AN EXTENSION to the side or rear (sub. to permissions) is this three bedroom detached property having a STYLISH THEME throughout.

Council Tax band: C

Tenure: Freehold

EPC Energy Efficiency Rating: C



0116 288 4888





Entrance Hall

With cloaks cupboard, stairs to first floor, laminate floor, radiator.

Ground Floor WC 7' 0" x 5' 9" (2.13m x 1.75m)

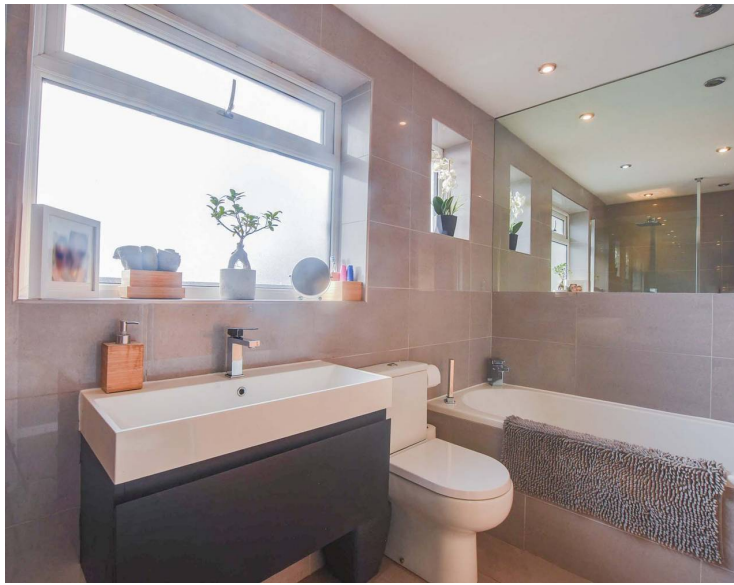
Measurement narrowing to 2'9". With low-level WC, wash hand basin, tiled floor, radiator.

Family Room 13' 5" x 8' 3" (4.09m x 2.51m)

With double glazed windows to the front and side elevations, laminate floor, radiator.

Open Plan Living Kitchen Dining Room 20' 5" x 11' 5" (6.22m x 3.48m)

Measurement also 18'4" x 10'10". With double glazed window and French doors to the rear elevation, living area with open aspect to dining area, kitchen area comprising a center island with breakfast bar, built-in oven and electric hob with extractor hood over, built-in dishwasher, one and a half bowl sink and drainer unit, base units with work surface over, sliding doors providing access to space for fridge freezer, shelving and drawers, cupboard housing boiler, inset ceiling spotlights, part laminate and part tiled floor, two radiators.



First Floor Landing

With double glazed window to the side elevation, loft access, radiator.

Bedroom One 13' 6" x 11' 6" (4.11m x 3.51m)

Measurement plus wardrobe space. With double glazed window to the rear elevation, built-in wardrobes with sliding doors, inset ceiling spotlights, TV point, radiator.

Bedroom Two 11' 6" x 8' 8" (3.51m x 2.64m)

With double glazed window to the front elevation, inset ceiling spotlights, radiator.

Bedroom Three 8' 8" x 7' 5" (2.64m x 2.26m)

With double glazed window to the rear elevation, radiator,

Bathroom 10' 6" x 5' 4" (3.20m x 1.63m)

With two double glazed windows to the side elevation, bath, separate walk-in tiled shower cubicle with overhead rain forest shower and hand held shower, wash hand basin, low-level WC, inset ceiling spotlights, mirror, tiled walls, tiled floor, under floor heating, heated chrome towel rail.

Front Garden

Gravelled frontage.

Rear Garden

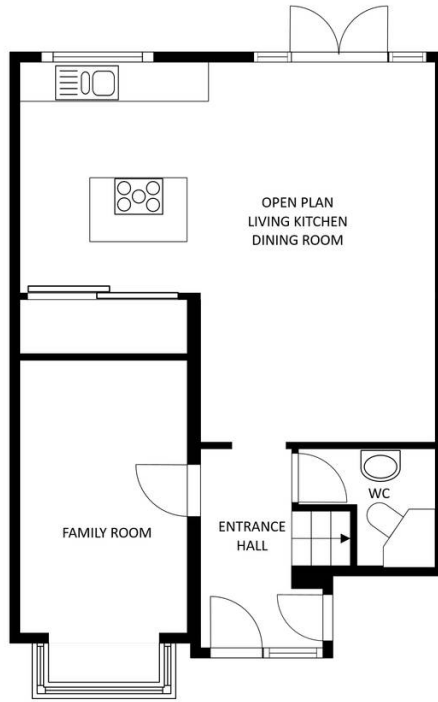
With decked area, lawn, further raised decked area providing space for hot tub, gravelled seating area, outside tap, flowerbeds with mature shrubs, mature trees, outside tap, rear door to garage, gate to side access.

Driveway 3 vehicles

Providing off road parking.

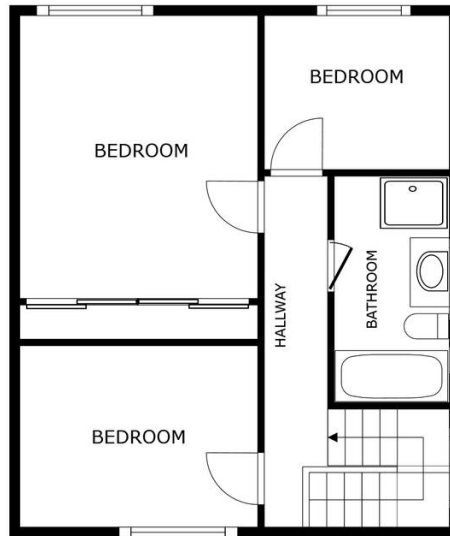
Garage 2 vehicles

Measuring 18' x 17'4". With up and over door to the front elevation, power and lighting.



FLOOR 1

SIZES AND DIMENSIONS ARE APPROXIMATE, ACTUAL MAY VARY.



FLOOR 2

SIZES AND DIMENSIONS ARE APPROXIMATE, ACTUAL MAY VARY.



We'll keep you moving...



We must inform all prospective purchasers that the measurements are taken by an electronic take and are provided as a guide only and they should not be used as accurate measurements. We have not tested any mains services, gas or electric appliances, or fixtures and fittings mentioned in these details, therefore, prospective purchasers should satisfy themselves before committing to purchase. Intending purchasers must satisfy themselves by inspection or otherwise to the correctness of the statements contained in these particulars. Knightsbridge Estate Agents (nor any person in their employment) has any authority to make any representation or warranty in relation to the property. The floor plans are not to scale, and are intended for use as a guide to the layout of the property only. They should not be used for any other purpose. We are required by law to conduct anti-money laundering checks on all those selling or buying a property. Whilst we retain responsibility for ensuring checks and any ongoing monitoring are carried out correctly, the initial checks are carried out on our behalf by Lifetime Legal who will contact you once you have agreed to instruct us in your sale or had an offer accepted on a property you wish to buy. The cost of these checks is £60 (incl. VAT), which covers the cost of obtaining relevant data and any manual checks and monitoring which might be required. This fee will need to be paid by you in advance of us publishing your property (in the case of a vendor) or issuing a memorandum of sale (in the case of a buyer), directly to Lifetime Legal, and is non-refundable. We will receive some of the fee taken by Lifetime Legal to compensate for its role in the provision of these checks.