



Chelsea Close, Glen Parva

In Excess of £265,000

Located within a cul-de-sac is this MODERN STYLE semi-detached property providing an IDEAL FIRST TIME PURCHASE or family home. The accommodation comprises of two reception rooms, modern style fitted kitchen, three first floor bedrooms and a modern style shower room.



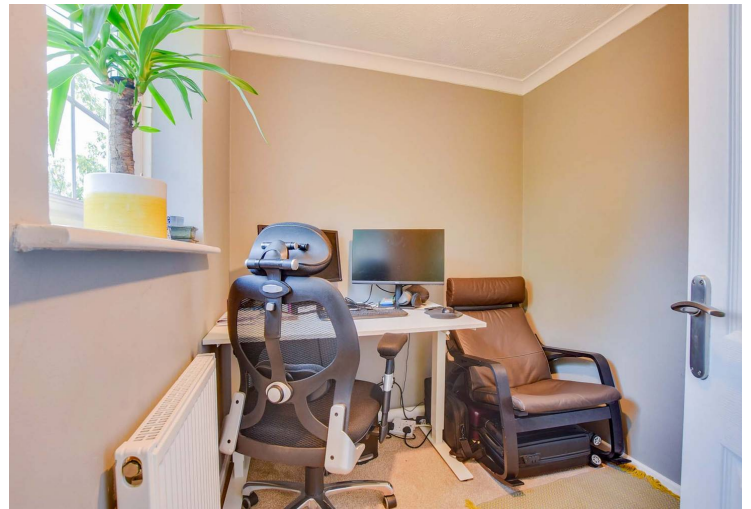
0116 288 4888

Council Tax band: B

Tenure: Freehold

EPC Energy Efficiency Rating: C





Entrance Lobby

With access to:

Sitting Room 15' 1" x 10' 2" (4.60m x 3.10m)

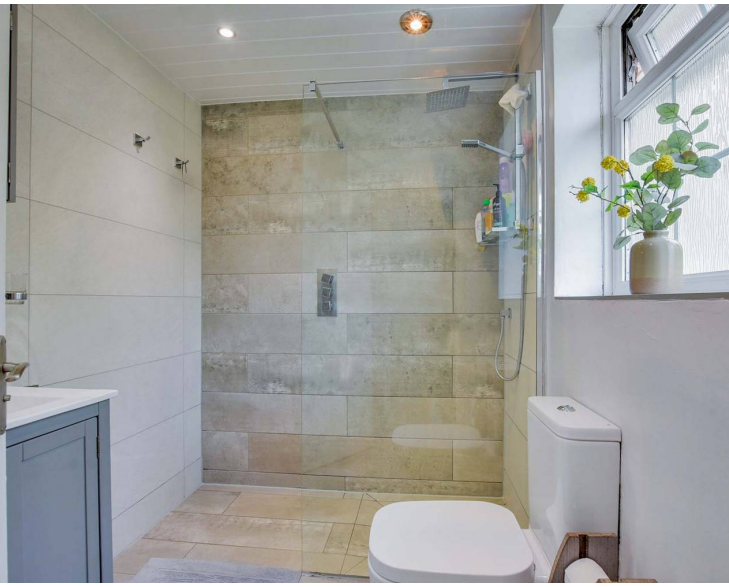
With double glazed windows to the front and rear elevations, door to the rear, fireplace with brick surround and hearth, laminate floor, radiator.

Dining Room 13' 0" x 7' 10" (3.96m x 2.39m)

With double glazed window to the front elevation, stairs to first floor, laminate floor, radiator.

Kitchen 13' 0" x 7' 2" (3.96m x 2.18m)

With double glazed window and door to the rear elevation, ceramic sink and drainer unit with a range of wall and base units with work surfaces over, built-in oven and hob with filter hood over, built-in dishwasher, plumbing for washing machine, wall mounted boiler, tiled floor, part tiled walls.



First Floor Landing

With double glazed window to the rear elevation.

Bedroom One 11' 3" x 11' 0" (3.43m x 3.35m)

With double glazed window to the front elevation, fitted wardrobes, loft access, radiator.

Bedroom Two 10' 3" x 8' 6" (3.12m x 2.59m)

With double glazed window to the front elevation, radiator.

Bedroom Three 7' 7" x 6' 6" (2.31m x 1.98m)

With double glazed window to the rear elevation, radiator.

Shower Room 7' 1" x 5' 10" (2.16m x 1.78m)

With double glazed window to the rear elevation, inset ceiling spotlights, walk-in tiled shower cubicle, pedestal wash hand basin, low-level WC, tiled floor, heated towel rail.

Front Garden

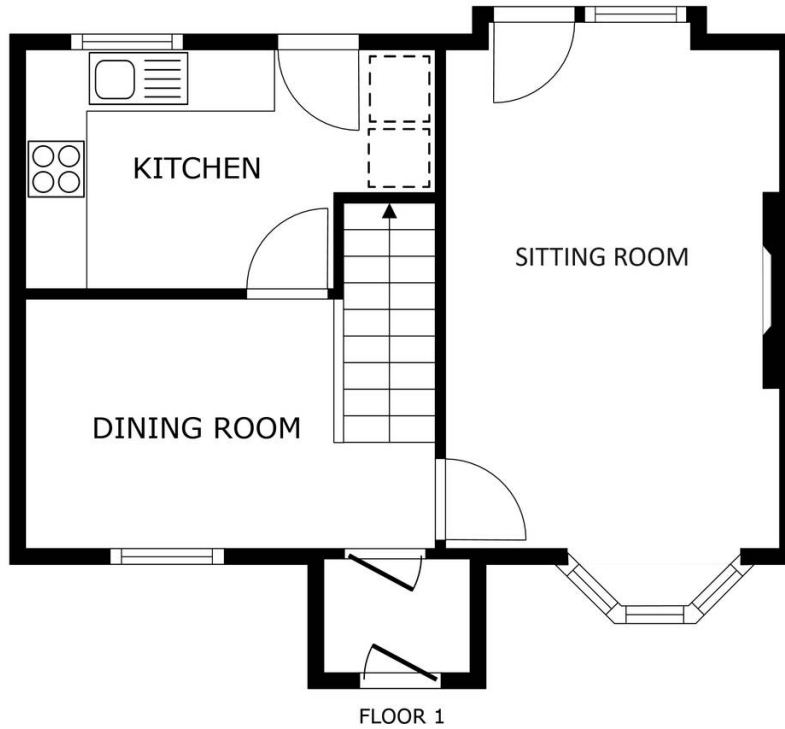
Lawn front garden with paved pathway.

Rear Garden

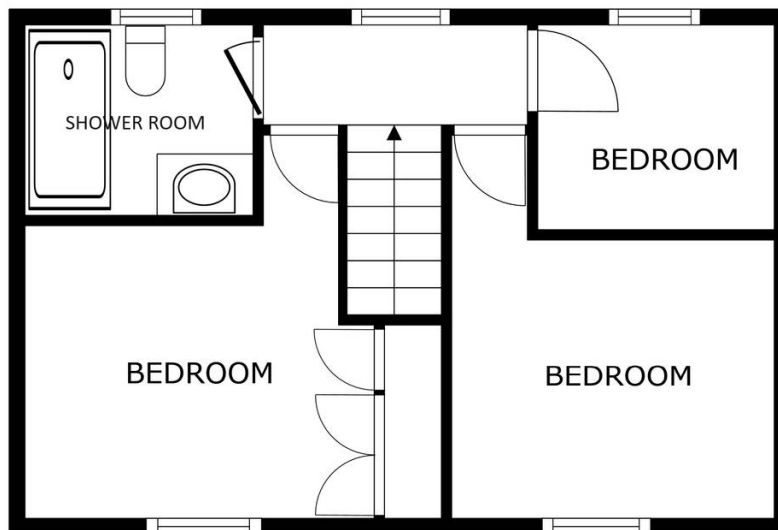
With paved patio seating area, lawn, flowerbeds and shrubs, fencing to perimeter, gate to side access.

Driveway

Providing off road parking.



SIZES AND DIMENSIONS ARE APPROXIMATE, ACTUAL MAY VARY.



SIZES AND DIMENSIONS ARE APPROXIMATE, ACTUAL MAY VARY.



We'll keep you moving...



We must inform all prospective purchasers that the measurements are taken by an electronic take and are provided as a guide only and they should not be used as accurate measurements. We have not tested any mains services, gas or electric appliances, or fixtures and fittings mentioned in these details, therefore, prospective purchasers should satisfy themselves before committing to purchase. Intending purchasers must satisfy themselves by inspection or otherwise to the correctness of the statements contained in these particulars. Knightsbridge Estate Agents (nor any person in their employment) has any authority to make any representation or warranty in relation to the property. The floor plans are not to scale, and are intended for use as a guide to the layout of the property only. They should not be used for any other purpose. We are required by law to conduct anti-money laundering checks on all those selling or buying a property. Whilst we retain responsibility for ensuring checks and any ongoing monitoring are carried out correctly, the initial checks are carried out on our behalf by Lifetime Legal who will contact you once you have agreed to instruct us in your sale or had an offer accepted on a property you wish to buy. The cost of these checks is £60 (incl. VAT), which covers the cost of obtaining relevant data and any manual checks and monitoring which might be required. This fee will need to be paid by you in advance of us publishing your property (in the case of a vendor) or issuing a memorandum of sale (in the case of a buyer), directly to Lifetime Legal, and is non-refundable. We will receive some of the fee taken by Lifetime Legal to compensate for its role in the provision of these checks.