

Edward Road, Fleckney

Offers Over £250,000

A charming THREE-BEDROOM semi-detached family home in FLECKNEY, featuring a stylish dining kitchen, a driveway, a garage, and a lovely rear garden.

Council Tax band: B

Tenure: Freehold

EPC Energy Efficiency Rating: C





Porch

With a wooden door, an obscured window to the front elevation and a dado rail.

Living Room

15' 4" x 14' 1" (4.67m x 4.29m)

(Irregular shape) With a double-glazed window to the front elevation, chimney breast, shelving, Tv point and a radiator.

Dining Kitchen

15' 4" x 10' 6" (4.67m x 3.20m)

With a double-glazed window to the rear elevation, double-glazed French doors to the rear elevation, double-glazed door to the rear elevation, wood effect flooring, a sink and drainer unit with a range of wall and base units with work surfaces over, an oven, four-ring gas hob, extractor, plumbing for a dishwasher, a space for a tall freestanding fridge freezer and a radiator.



Utility Area

With plumbing for a washing machine, space for a tumble dryer and power points.

First Floor Landing

Bedroom One

12' 4" x 8' 10" (3.76m x 2.69m)

With a double-glazed window to the front elevation, TV point and a radiator.

Bedroom Two

10' 5" x 8' 10" (3.18m x 2.69m)

With a double-glazed window to the rear elevation and a radiator.

Bedroom Three

6' 6" x 6' 4" (1.98m x 1.93m)

With a double-glazed window to the front elevation, a built-in over-stairs cupboard and a radiator.

Bathroom

7' 3" x 6' 4" (2.21m x 1.93m)

With a double-glazed window to the rear elevation, bath with shower over, WC, wash hand basin with storage, tiled walls and a heated towel rail.

Front Garden

A front garden with a pathway and steps leading to the front door.

Rear Garden

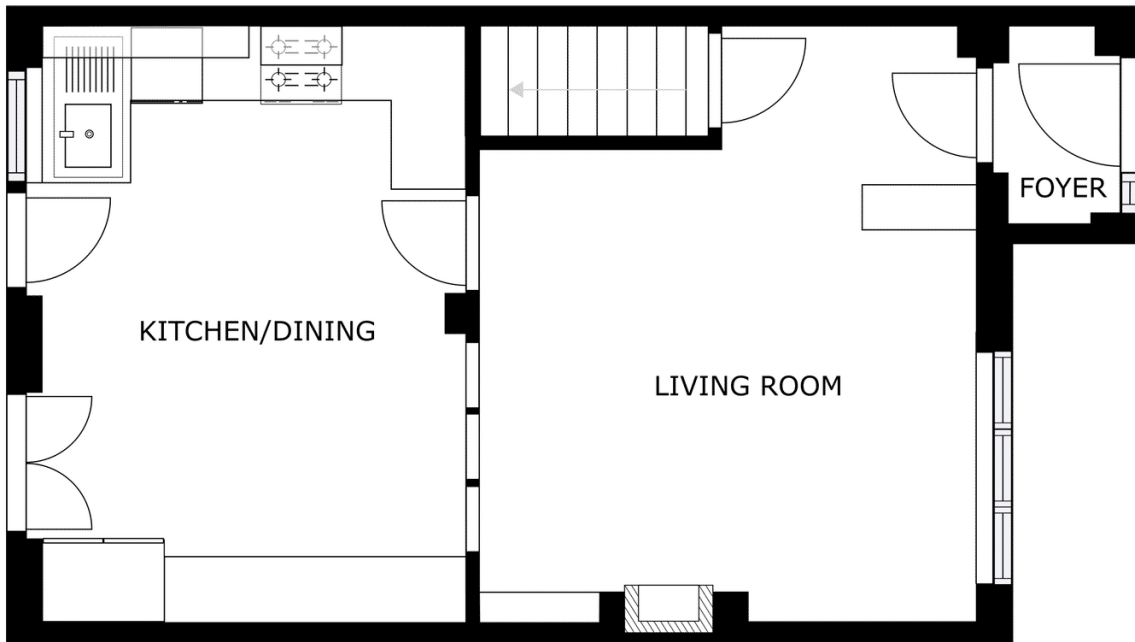
A well-maintained garden with a slabbed patio seating area, lawn, mature and established flower beds and well maintained fenced borders.

Driveway

With parking for two cars

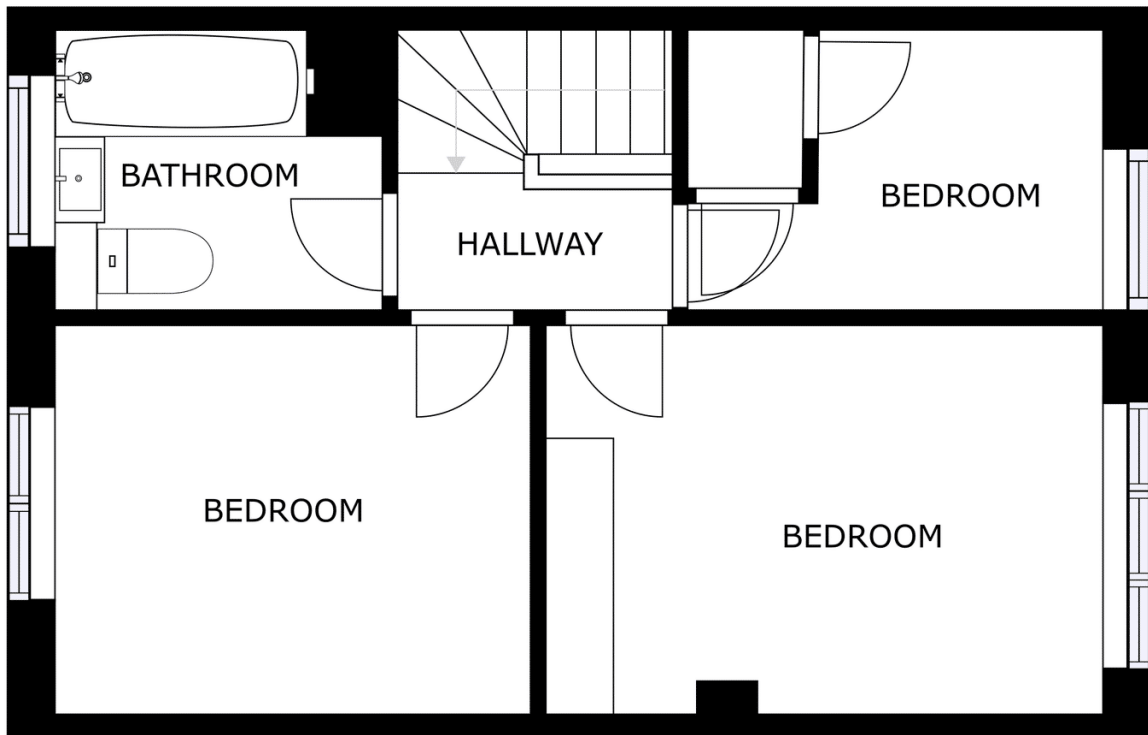
Garage

With up and over door.



FLOOR 1

GROSS INTERNAL AREA
 FLOOR 1: 38.37 m²; FLOOR 2: 35.25 m²
 TOTAL: 73.62 m²
 SIZES AND DIMENSIONS ARE APPROXIMATE, ACTUAL MAY VARY.



FLOOR 2

GROSS INTERNAL AREA
 FLOOR 1: 38.37 m²; FLOOR 2: 35.25 m²
 TOTAL: 73.62 m²
 SIZES AND DIMENSIONS ARE APPROXIMATE, ACTUAL MAY VARY.



We'll keep you moving...



We must inform all prospective purchasers that the measurements are taken by an electronic take and are provided as a guide only and they should not be used as accurate measurements. We have not tested any mains services, gas or electric appliances, or fixtures and fittings mentioned in these details, therefore, prospective purchasers should satisfy themselves before committing to purchase. Intending purchasers must satisfy themselves by inspection or otherwise to the correctness of the statements contained in these particulars. Knightsbridge Estate Agents (nor any person in their employment) has any authority to make any representation or warranty in relation to the property. The floor plans are not to scale, and are intended for use as a guide to the layout of the property only. They should not be used for any other purpose. We are required by law to conduct anti-money laundering checks on all those selling or buying a property. Whilst we retain responsibility for ensuring checks and any ongoing monitoring are carried out correctly, the initial checks are carried out on our behalf by Lifetime Legal who will contact you once you have agreed to instruct us in your sale or had an offer accepted on a property you wish to buy. The cost of these checks is £60 (incl. VAT), which covers the cost of obtaining relevant data and any manual checks and monitoring which might be required. This fee will need to be paid by you in advance of us publishing your property (in the case of a vendor) or issuing a memorandum of sale (in the case of a buyer), directly to Lifetime Legal, and is non-refundable. We will receive some of the fee taken by Lifetime Legal to compensate for its role in the provision of these checks.