

Herrick Way, Wigston

£235,000

A TWO BEDROOM end town-house in the residential suburb of Wigston with TWO RECEPTION ROOMS, driveway and a GARAGE.

Council Tax band: C

Tenure: Freehold

EPC Energy Efficiency Rating: D





Entrance Lobby

With cloaks cupboard.

Kitchen

9' 9" x 6' 7" (2.97m x 2.01m)

With a double-glazed window to the front elevation, a sink and drainer unit with a range of wall and base units with work surfaces over, a gas cooker point with filter hood over, plumbing for a washing machine and a radiator.

Reception Room One

14' 8" x 12' 5" (4.47m x 3.78m)

With a TV point, stairs to the first-floor landing, radiator and open aspect to:

Reception Room Two

11' 0" x 8' 8" (3.35m x 2.64m)

With double-glazed French doors to the rear elevation, skylight window to the rear elevation and a radiator.



First Floor Landing

Bedroom One

12' 4" x 11' 3" (3.76m x 3.43m)

With a double-glazed window to the rear elevation, fitted wardrobes, a TV point and a radiator.

Bedroom Two

11' 0" x 6' 0" (3.35m x 1.83m)

With a double-glazed window to the front elevation, built-in cupboard and a radiator.

Shower Room

6' 1" x 5' 9" (1.85m x 1.75m)

With a double-glazed window to the front elevation, a tiled shower cubicle with an electric shower over, wash hand basin, WC and a radiator.

Rear Garden

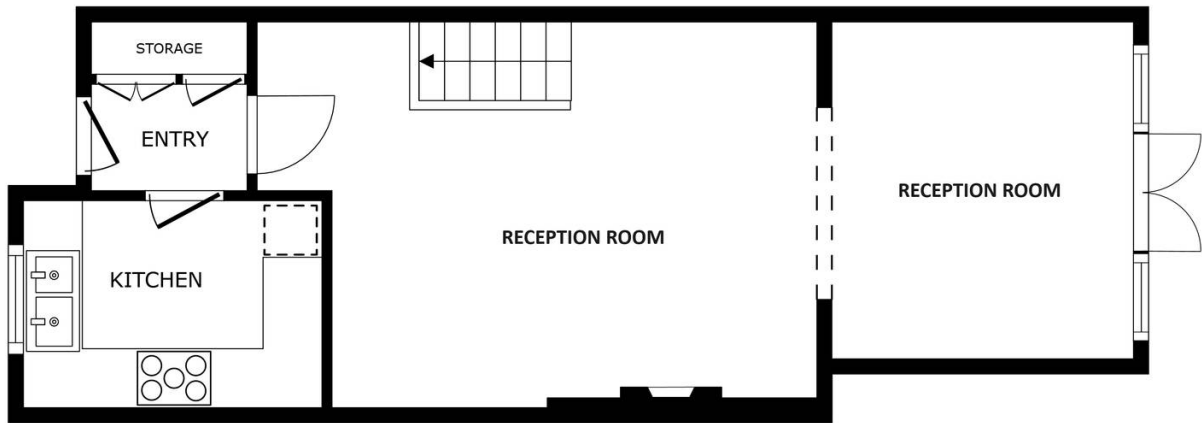
An established and well-stocked rear garden with mainly paved and gravelled areas with a range of well-stocked flower beds with mature shrubs and trees and a side door to the garage.

Driveway

Block paved driveway to the side elevation leading to the:

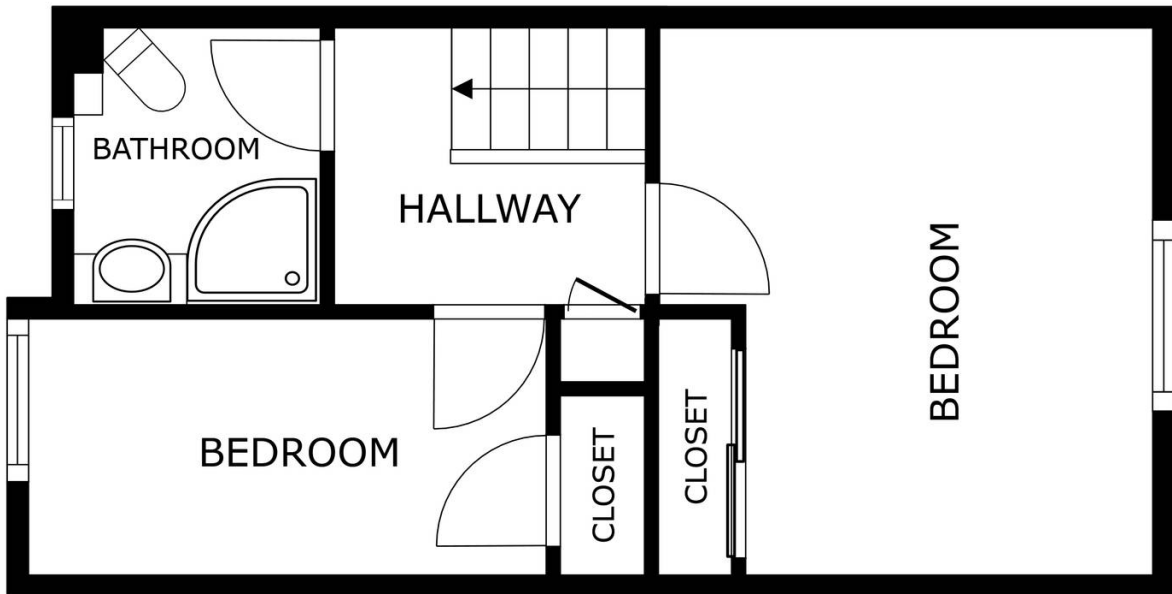
Garage

15'7" x 8'2" With an up-and-over door to the front elevation.



FLOOR 1

GROSS INTERNAL AREA
 FLOOR 1 41.5 m² FLOOR 2 31.0 m²
 TOTAL : 72.5 m²
SIZES AND DIMENSIONS ARE APPROXIMATE, ACTUAL MAY VARY.



FLOOR 2

GROSS INTERNAL AREA
 FLOOR 1 41.5 m² FLOOR 2 31.0 m²
 TOTAL : 72.5 m²
SIZES AND DIMENSIONS ARE APPROXIMATE, ACTUAL MAY VARY.



We'll keep you moving...



We must inform all prospective purchasers that the measurements are taken by an electronic take and are provided as a guide only and they should not be used as accurate measurements. We have not tested any mains services, gas or electric appliances, or fixtures and fittings mentioned in these details, therefore, prospective purchasers should satisfy themselves before committing to purchase. Intending purchasers must satisfy themselves by inspection or otherwise to the correctness of the statements contained in these particulars. Knightsbridge Estate Agents (nor any person in their employment) has any authority to make any representation or warranty in relation to the property. The floor plans are not to scale, and are intended for use as a guide to the layout of the property only. They should not be used for any other purpose. We are required by law to conduct anti-money laundering checks on all those selling or buying a property. Whilst we retain responsibility for ensuring checks and any ongoing monitoring are carried out correctly, the initial checks are carried out on our behalf by Lifetime Legal who will contact you once you have agreed to instruct us in your sale or had an offer accepted on a property you wish to buy. The cost of these checks is £60 (incl. VAT), which covers the cost of obtaining relevant data and any manual checks and monitoring which might be required. This fee will need to be paid by you in advance of us publishing your property (in the case of a vendor) or issuing a memorandum of sale (in the case of a buyer), directly to Lifetime Legal, and is non-refundable. We will receive some of the fee taken by Lifetime Legal to compensate for its role in the provision of these checks.