

Peakdale, Wigston

Offers Over £465,000

We as an agent feel that this is a SPACIOUS and WELL MAINTAINED detached bungalow situated within Wigston along the cul-de-sac of Peakdale. The property provides accommodation over one floor to include fitted dining kitchen and snug area FOUR BEDROOMS.





Entrance Hall

With two double glazed windows to the front elevation, tiled floor, radiator.

Lounge

18' 5" x 13' 5" (5.61m x 4.09m)

With double glazed window to the side elevation, double glazed patio doors to the rear elevation, tiled floor, chimney breast with coal effect gas fire, surround and hearth, TV point, radiator, doors leading to:

Formal Dining Room

15' 7" x 13' 2" (4.75m x 4.01m)

With double glazed window to the rear elevation, living flame gas fire with brick surround and hearth, two radiators.

Fitted Dining Kitchen

14' 10" x 12' 10" (4.52m x 3.91m)

With double glazed window to the side elevation, tile floor, part tiled walls, a range of wall and base units with work surfaces over, sink and drainer unit, inset four ring electric ceramic hob and double oven, chimney hood, space for freestanding fridge freezer, built-in appliances including washing machine and dishwasher, spotlights, door to courtyard area, archway leading to:



Snug

13' 0" x 8' 0" (3.96m x 2.44m)

With double glazed window to the side elevation, tiled floor, TV point, radiator.

Conservatory

9' 4" x 10' 8" (2.84m x 3.25m)

Double glazed conservatory with French doors to the rear garden, tiled floor, radiator.

Bedroom One

15' 5" x 10' 2" (4.70m x 3.10m)

With double glazed window to the front elevation, built-in wardrobes, dresser and drawers, radiator.

Bedroom Two

11' 2" x 9' 10" (3.40m x 3.00m)

With double glazed window to the rear elevation, radiator.

Bedroom Three

10' 7" x 10' 0" (3.23m x 3.05m)

With double glazed window to the front elevation, built-in wardrobe, drawers and box cupboards, radiator.

Bedroom Four

11' 0" x 7' 0" (3.35m x 2.13m)

With double glazed window to the front elevation, built-in cupboard, radiator.









Bathroom

11' 2" x 7' 10" (3.40m x 2.39m)

With double glazed window to the rear elevation, corner spa bath, shower cubicle, low-level WC, wash hand basin with storage below, wall mounted storage, tiled walls, two chrome ladder style radiators.

Separate WC

With double glazed window to the front elevation, low-level WC, wash hand basin, tiled floor.

Front Garden

Gravel frontage with borders of shrubs

Rear Garden

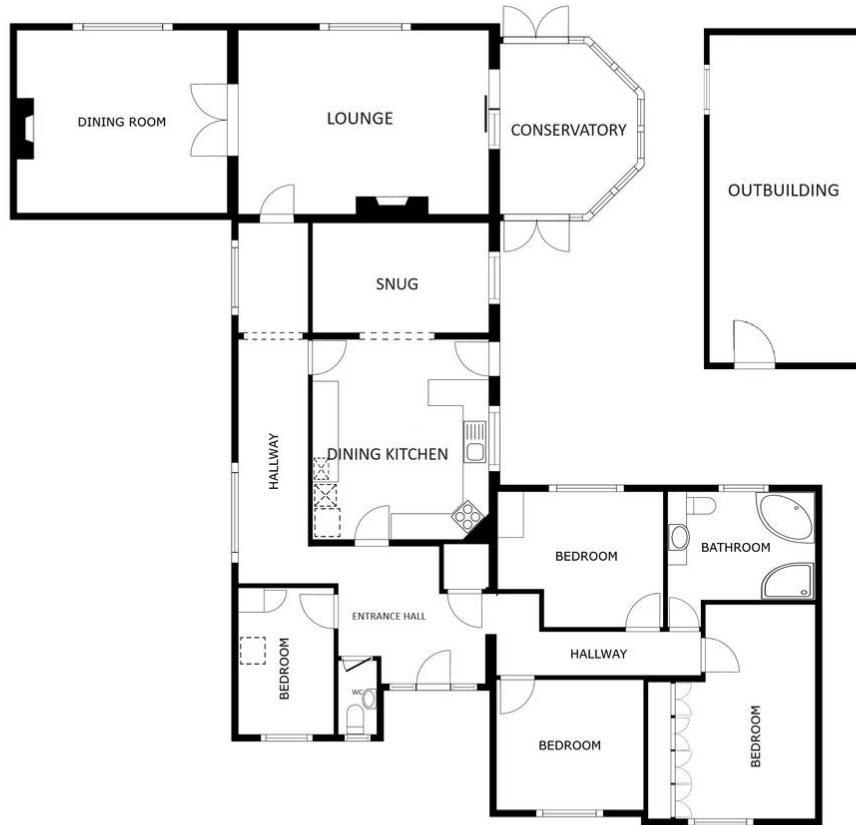
With a courtyard style patio seating area, additional raised seating area, lawn, established flowerbeds and shrubs, fencing to perimeter and backs onto open fields, the outbuilding has water supply, power and lighting.

Driveway 3 vehicles

Providing off road parking for several cars.

Garage

Double garage with electric up and over door to the front elevation.



FLOOR PLAN

SIZES AND DIMENSIONS ARE APPROXIMATE, ACTUAL MAY VARY.



You can include any text here. The text can be modified upon generating your brochure.





The property is perfectly situated for everyday amenities within Wigston Magna, including Sainsburys and Aldi supermarkets and local schooling. Regular bus routes running to and from Leicester City Centre and Knighton Park are also within reach.

Council Tax band: E

Tenure: Freehold

EPC Energy Efficiency Rating: E

We'll keep you moving...



We must inform all prospective purchasers that the measurements are taken by an electronic take and are provided as a guide only and they should not be used as accurate measurements. We have not tested any mains services, gas or electric appliances, or fixtures and fittings mentioned in these details, therefore, prospective purchasers should satisfy themselves before committing to purchase. Intending purchasers must satisfy themselves by inspection or otherwise to the correctness of the statements contained in these particulars. Knightsbridge Estate Agents (nor any person in their employment) has any authority to make any representation or warranty in relation to the property. The floor plans are not to scale, and are intended for use as a guide to the layout of the property only. They should not be used for any other purpose. We are required by law to conduct anti-money laundering checks on all those selling or buying a property. Whilst we retain responsibility for ensuring checks and any ongoing monitoring are carried out correctly, the initial checks are carried out on our behalf by Lifetime Legal who will contact you once you have agreed to instruct us in your sale or had an offer accepted on a property you wish to buy. The cost of these checks is £60 (incl. VAT), which covers the cost of obtaining relevant data and any manual checks and monitoring which might be required. This fee will need to be paid by you in advance of us publishing your property (in the case of a vendor) or issuing a memorandum of sale (in the case of a buyer), directly to Lifetime Legal, and is non-refundable. We will receive some of the fee taken by Lifetime Legal to compensate for its role in the provision of these checks.