



Asquith Boulevard, West Knighton

Offers in Excess of £240,000

SEMI-DETACHED bungalow in West Knighton with TWO DOUBLE BEDROOMS.

Council Tax band: C

Tenure: Freehold

EPC Energy Efficiency Rating: D



0116 288 4888





Porch

With a double-glazed window to the front elevation.

Entrance Hall

With a double-glazed window to the front elevation, storage cupboard, loft hatch and a radiator.

Lounge

14' 6" x 10' 10" (4.42m x 3.30m)

With a double-glazed window to the front elevation and a radiator.

Bathroom

6' 4" x 5' 5" (1.93m x 1.65m)

With a double-glazed window to the side elevation, wet room area, shower, WC, wash hand basin and a radiator.



Kitchen

10' 11" x 8' 8" (3.33m x 2.64m)

With a double-glazed window and timber door to the drive and garage on the side elevation, a sink and drainer unit with a range of wall and base units with work surfaces over, space for a cooker, a washing machine, tumble drier/dishwasher and space for a fridge freezer.

Bedroom One

12' 6" x 10' 10" (3.81m x 3.30m)

With a double-glazed window to the rear elevation and a radiator.

Bedroom Two

11' 11" x 9' 5" (3.63m x 2.87m)

With a double-glazed window to the rear elevation, sliding door to the rear elevation and a radiator.

Front Garden

With a lawn and flower beds.

Rear Garden

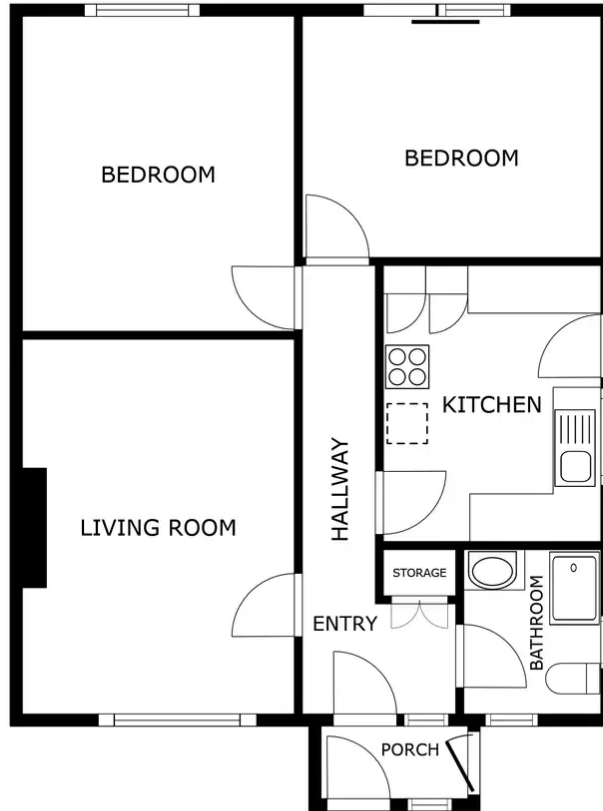
With a patio seating area, lawn area, greenhouse and gated side access to additional driveway and garage.

Driveway

Off-road parking for at least three vehicles.

Garage

Single garage with electricity and lighting.



FLOOR PLAN

SIZES AND DIMENSIONS ARE APPROXIMATE, ACTUAL MAY VARY.



We'll keep you moving...



We must inform all prospective purchasers that the measurements are taken by an electronic tape and are provided as a guide only and they should not be used as accurate measurements. We have not tested any mains services, gas or electric appliances, or fixtures and fittings mentioned in these details, therefore, prospective purchasers should satisfy themselves before committing to purchase. Intending purchasers must satisfy themselves by inspection or otherwise to the correctness of the statements contained in these particulars. Knightsbridge Estate Agents & valuers (nor any person in their employment) has any authority to make any representation or warranty in relation to the property. The floor plans are not to scale, and are intended for use as a guide to the layout of the property only. They should not be used for any other purpose. Similarly, the plans are not designed to represent the actual décor found at the property in respect of flooring, wall coverings or fixtures and fittings.