



Bassett Street, Wigston

Offers Over £180,000

IDEAL FIRST TIME PURCHASE OR BUY TO LET INVESTMENT - Three-bedroom mid-terrace home in WIGSTON.

Council Tax band: A

Tenure: Freehold

EPC Energy Efficiency Rating: D



Knightsbridge
Estate Agents

0116 288 4888





Living Room

13' 7" x 11' 6" (4.14m x 3.51m)

With a bay window to the front elevation, meter cupboard and radiator.

Dining Room

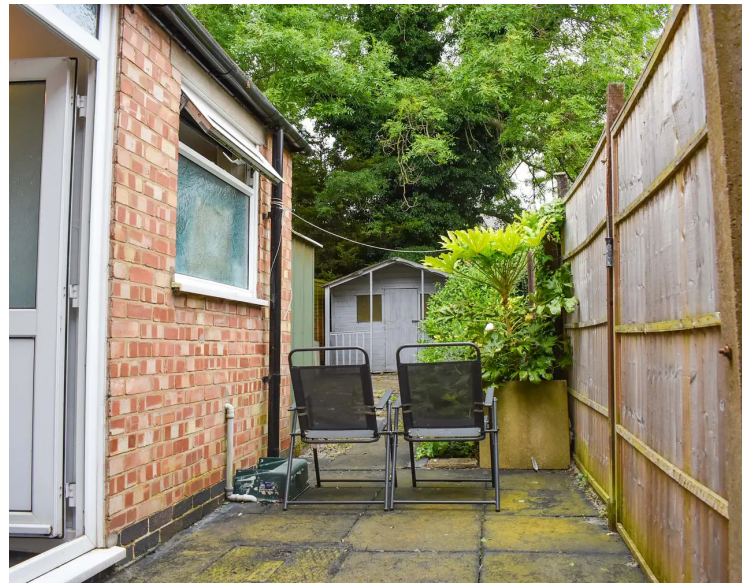
11' 7" x 11' 5" (3.53m x 3.48m)

With a window to the rear elevation, door to the rear elevation, storage cupboard and a radiator.

Kitchen

12' 9" x 6' 0" (3.89m x 1.83m)

With a window to the side elevation, a sink and drainer unit with a range of wall and base units with work surfaces over, hob, an oven, space for a washing machine, space for a tumble dryer and space for a fridge freezer.



Bathroom

6' 8" x 5' 8" (2.03m x 1.73m)

With a window to the side elevation, WC, wash hand basin, bath with shower over and a radiator.

First Floor Landing

Bedroom One

13' 0" x 11' 8" (3.96m x 3.56m)

With a window to the front elevation, built-in wardrobes and a radiator.

Bedroom Two

9' 10" x 8' 3" (3.00m x 2.51m)

With a window to the rear elevation and a radiator.

Bedroom Three

12' 4" x 6' 0" (3.76m x 1.83m)

With a window to the rear elevation and a radiator.

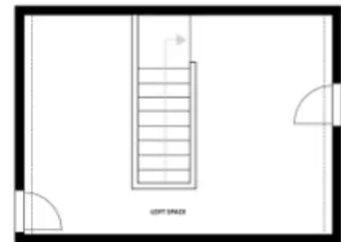
Loft Space

16' 2" x 11' 4" (4.93m x 3.45m)

With two Velux skylights, storage in the eaves and a radiator.

Rear Garden

A low-maintenance rear garden with two patio seating areas, two sheds, flower beds and shared access to the front elevation.



00000000000000000000000000000000
 00000000000000000000000000000000
 00000000000000000000000000000000
 00000000000000000000000000000000
 00000000000000000000000000000000
 00000000000000000000000000000000



We'll keep you moving...



We must inform all prospective purchasers that the measurements are taken by an electronic tape and are provided as a guide only and they should not be used as accurate measurements. We have not tested any mains services, gas or electric appliances, or fixtures and fittings mentioned in these details, therefore, prospective purchasers should satisfy themselves before committing to purchase. Intending purchasers must satisfy themselves by inspection or otherwise to the correctness of the statements contained in these particulars. Knightsbridge Estate Agents & valuers (nor any person in their employment) has any authority to make any representation or warranty in relation to the property.' The floor plans are not to scale, and are intended for use as a guide to the layout of the property only. They should not be used for any other purpose. Similarly, the plans are not designed to represent the actual décor found at the property in respect of flooring, wall coverings or fixtures and fittings.