



Old Saffron Lane, Aylestone

£270,000

Charming modern two-bedroom home with impressive kitchen diner leading to a lovely rear garden, perfect for first-time buyers. Situated near a park. Upstairs offers two bedrooms and family bathroom. View to appreciate!

Council Tax band: B

Tenure: Freehold

EPC Energy Efficiency Rating: B



0116 288 4888





- Lounge**
16' 2" x 12' 3" (4.92m x 3.74m)
With a window to the front elevation, parquet chevron flooring, modern wood panelled feature wall, and a radiator.
- Hallway**
With storage cupboard.
- WC**
5' 2" x 4' 1" (1.57m x 1.24m)
With wash hand basin, WC, sink and panel radiator.
- Kitchen Diner**
16' 5" x 8' 4" (5.00m x 2.54m)
Window overlooking the rear garden, wall and base kitchen units with a wood effect worktop, sink and drainer, single oven with gas hob and extractor hood over, integrated dishwasher, integrated fridge freezer, radiator and wall mounted air conditioning unit.



Landing

With loft hatch to fully boarded loft space and airing cupboard.

Bedroom 1

16' 5" x 10' 4" (5.00m x 3.15m)

Window to rear, radiator, fitted wardrobe and wall-mounted air conditioning unit.

Bedroom 2

15' 3" x 8' 6" (4.66m x 2.59m)

window to front and radiator.

Bathroom

7' 9" x 5' 9" (2.36m x 1.76m)

3-piece suite, bath with shower over, hand wash basin, WC, radiator and window to front.

Garden

Rear low maintenance garden with patio and pagoda, artificial lawn with wildflower borders and garden shed with electric and lighting.

Front Garden

Off-road parking for 1 car, low maintenance plum slate borders with grasses and trees

Driveway

For one vehicle.



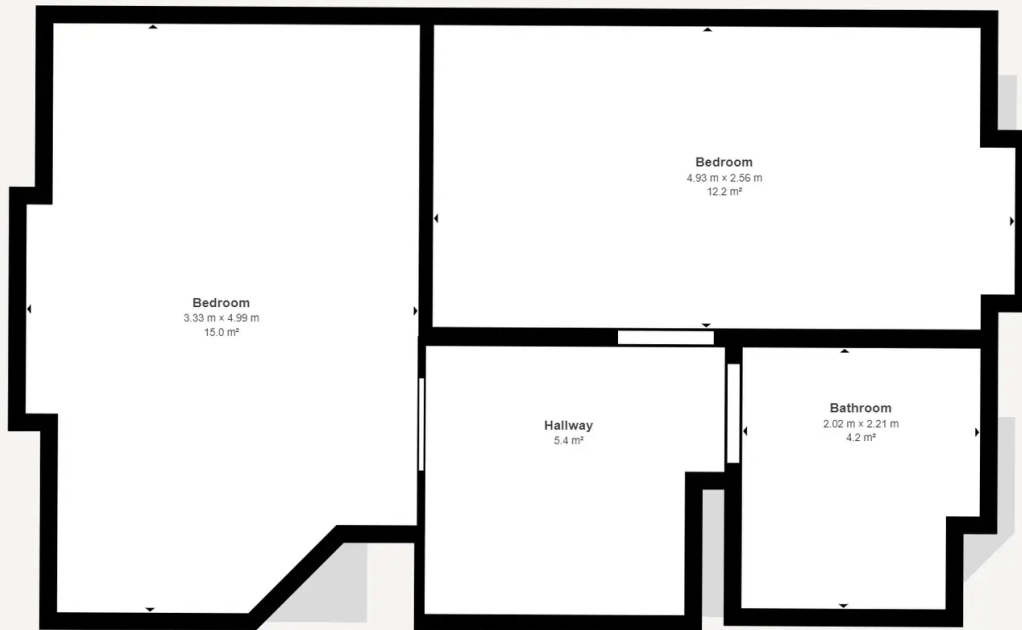
Matterport Property Report:

Old Saffron Lane

Indoor Scanned Area - Full Property 73.2 m² | Floor 1 36.4 m²

Sizes and dimensions are approximate, actual may vary

Visit 3D space on
Matterport



Matterport Property Report:

Old Saffron Lane

Indoor Scanned Area - Full Property 73.2 m² | Floor 2 36.8 m²

Sizes and dimensions are approximate, actual may vary

Visit 3D space on
Matterport



We'll keep you moving...



We must inform all prospective purchasers that the measurements are taken by an electronic take and are provided as a guide only and they should not be used as accurate measurements. We have not tested any mains services, gas or electric appliances, or fixtures and fittings mentioned in these details, therefore, prospective purchasers should satisfy themselves before committing to purchase. Intending purchasers must satisfy themselves by inspection or otherwise to the correctness of the statements contained in these particulars. Knightsbridge Estate Agents (nor any person in their employment) has any authority to make any representation or warranty in relation to the property. The floor plans are not to scale, and are intended for use as a guide to the layout of the property only. They should not be used for any other purpose. We are required by law to conduct anti-money laundering checks on all those selling or buying a property. Whilst we retain responsibility for ensuring checks and any ongoing monitoring are carried out correctly, the initial checks are carried out on our behalf by Lifetime Legal who will contact you once you have agreed to instruct us in your sale or had an offer accepted on a property you wish to buy. The cost of these checks is £60 (incl. VAT), which covers the cost of obtaining relevant data and any manual checks and monitoring which might be required. This fee will need to be paid by you in advance of us publishing your property (in the case of a vendor) or issuing a memorandum of sale (in the case of a buyer), directly to Lifetime Legal, and is non-refundable. We will receive some of the fee taken by Lifetime Legal to compensate for its role in the provision of these checks.