



Netton Close, Wigston

£325,000

Knightsbridge are EXTREMELY DELIGHTED to present this THREE BEDROOM detached house situated in Wigston. Outside you are greeted by a large maintained rear garden with paved patio and flowerbeds, a TRUE GEM in the agents opinion.

Council Tax band: C

Tenure: Freehold

EPC Energy Efficiency Rating: D



0116 288 4888





Entrance Hall

With window and door to the front elevation, meter cupboard, radiator.

Cloaks/WC

With window to the side elevation, low-level WC, wash hand basin, part tiled walls.

Lounge/Diner

23' 4" x 15' 9" (7.11m x 4.80m)

With window to the side elevation, window and sliding patio doors to the rear elevation, gas fire with brick surround, under stairs storage, two radiators.

Kitchen

10' 7" x 8' 11" (3.23m x 2.72m)

With window to the front elevation, door to the side elevation, wall and base units with work surface over, sink and drainer, inset oven and hob, extractor fan, integrated dishwasher, integrated fridge, room for fridge freezer, space for washing machine part tiled walls, tiled floor, radiator.



First Floor Landing

With window to the front elevation, airing cupboard, loft access.

Bedroom One

12' 2" x 12' 1" (3.71m x 3.68m)

With window to the rear elevation, fitted wardrobe and dresser, built-in bedside tables, radiator.

Bedroom Two

11' 3" x 8' 6" (3.43m x 2.59m)

With window to the rear elevation, built-in wardrobe and drawers, built-in cupboard, radiator.

Bedroom Three

7' 11" x 6' 11" (2.41m x 2.11m)

With window to the front elevation, built-in wardrobe and drawers, radiator.

Bathroom

7' 6" x 5' 6" (2.29m x 1.68m)

With windows to the front and side elevations, low-level WC, wash hand basin, bath with shower over, medicine cabinet, tiled walls, radiator.

Front Garden

With lawn, Cherry Blossom tree.

Rear Garden

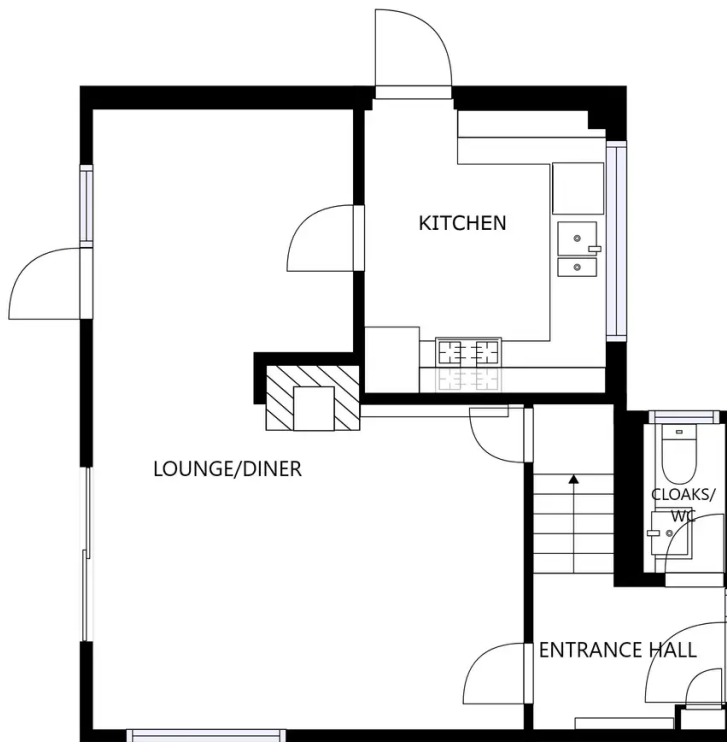
A tiered rear garden with paved patio area, shaped lawn, flowerbeds and shrubs, access to the front, paved pathway, shed, greenhouse.

Driveway

Providing off road parking.

Garage

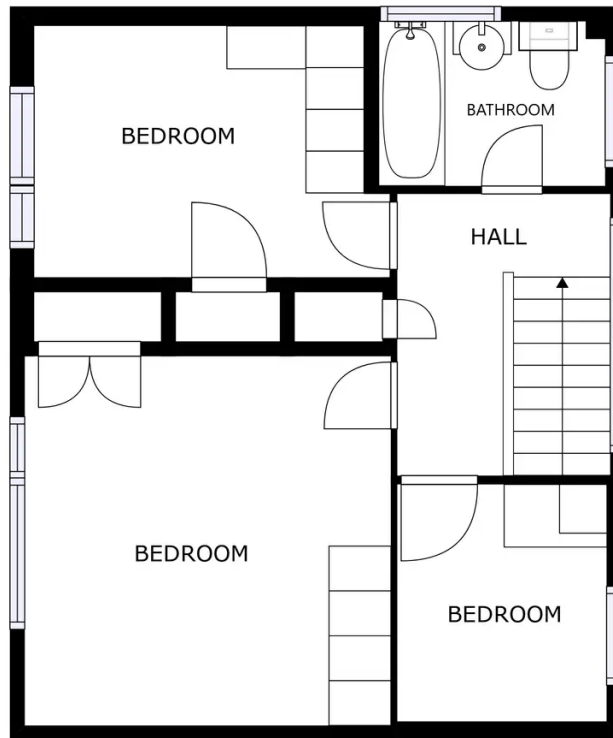
1 vehicles



TOTAL: 92 m²
 FLOOR 1: 49 m², FLOOR 2: 43 m²

SIZES AND DIMENSIONS ARE APPROXIMATE, ACTUAL MAY VARY.

FLOOR 1



TOTAL: 92 m²
 FLOOR 1: 49 m², FLOOR 2: 43 m²

SIZES AND DIMENSIONS ARE APPROXIMATE, ACTUAL MAY VARY.

FLOOR 2



We'll keep you moving...



We must inform all prospective purchasers that the measurements are taken by an electronic tape and are provided as a guide only and they should not be used as accurate measurements. We have not tested any mains services, gas or electric appliances, or fixtures and fittings mentioned in these details, therefore, prospective purchasers should satisfy themselves before committing to purchase. Intending purchasers must satisfy themselves by inspection or otherwise to the correctness of the statements contained in these particulars. Knightsbridge Estate Agents & valuers (nor any person in their employment) has any authority to make any representation or warranty in relation to the property. The floor plans are not to scale, and are intended for use as a guide to the layout of the property only. They should not be used for any other purpose. Similarly, the plans are not designed to represent the actual décor found at the property in respect of flooring, wall coverings or fixtures and fittings.