



The Tofts, Wigston, Leicester

Offers in Excess of £350,000

Three bedroom DETACHED bungalow in a cul-de-sac position in WIGSTON.

Council Tax band: D

Tenure: Freehold

EPC Energy Efficiency Rating: C



Knightsbridge
Estate Agents

0116 288 4888





Entrance Hall

Entered via a front door, the entrance hall has a storage cupboard and a radiator.

Living Room

17' 0" x 13' 0" (5.18m x 3.96m)

With a window to the side elevation, French doors to the rear elevation, gas fire with surround and hearth, TV point and radiator.

Dining Kitchen

15' 2" x 10' 0" (4.62m x 3.05m)

With windows to front and side elevations, wood effect flooring, a range of wall and base units with work surfaces over, sink and drainer unit, electric hob, oven, extractor hood over, plumbing for two appliances, space for a fridge/freezer, spotlights and a radiator.



Bedroom One

14' 10" x 8' 0" (4.52m x 2.44m)

With a window to the rear elevation, built-in wardrobes, spotlights and a radiator.

En-Suite

9' 4" x 3' 1" (2.84m x 0.94m)

With a window to the side elevation, a large shower cubicle with shower, WC, wash hand basin, and tiled splashbacks.

Bedroom Two

11' 1" x 8' 0" (3.38m x 2.44m)

With a window to the rear elevation and a radiator.

Bedroom Three

10' 0" x 8' 10" (3.05m x 2.69m)

With a window to the front elevation and a radiator.

Bathroom

8' 1" x 5' 7" (2.46m x 1.70m)

With a window to the front elevation, bath with mixer tap and shower attachment, WC, wash hand basin, tiled splashbacks and radiator.

Garden

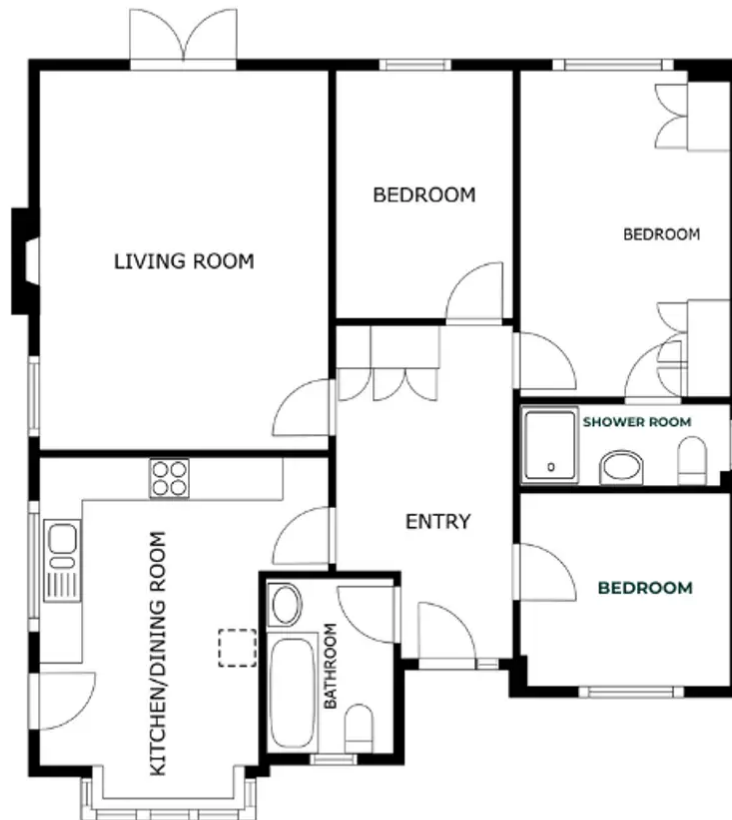
With a seating area, lawn and fenced perimeters.

Driveway

For two vehicles.

Garage

A detached garage with an electric remote controlled up and over door.



FLOOR PLAN

SIZES AND DIMENSIONS ARE APPROXIMATE, ACTUAL MAY VARY



We'll keep you moving...



We must inform all prospective purchasers that the measurements are taken by an electronic tape and are provided as a guide only and they should not be used as accurate measurements. We have not tested any mains services, gas or electric appliances, or fixtures and fittings mentioned in these details, therefore, prospective purchasers should satisfy themselves before committing to purchase. Intending purchasers must satisfy themselves by inspection or otherwise to the correctness of the statements contained in these particulars. Knightsbridge Estate Agents & valuers (nor any person in their employment) has any authority to make any representation or warranty in relation to the property. The floor plans are not to scale, and are intended for use as a guide to the layout of the property only. They should not be used for any other purpose. Similarly, the plans are not designed to represent the actual décor found at the property in respect of flooring, wall coverings or fixtures and fittings.