



Grasmere Road, Wigston, Leicester, LE18 4RF

£375,000

A BEAUTIFULLY PRESENTED bay fronted detached bungalow enjoying a PERFECT SIZE PLOT with SCOPE FOR EXTENSION, subj. to consent.

Council Tax band: C

Tenure: Freehold

EPC Energy Efficiency Rating: F



KNIGHTSBRIDGE-ESTATES.CO.UK



SCAN ME!
TO BOOK A VIEWING



Entrance Porch

Leading to:

Entrance Hall

With fitted storage cupboards, loft access.

Lounge

16' 0" x 11' 5" (4.88m x 3.48m)

With double glazed windows to the rear and side elevations, fireplace (capped off) with surround and hearth, radiator.

Modern Fitted Kitchen

11' 4" x 9' 9" (3.45m x 2.97m)

With double glazed window to the rear elevation, sink and drainer, wall and base units, integrated microwave, integrated oven and grill with extractor hood over, splash back, integrated dishwasher, space for a fridge freezer, plinth heater, tiled floor.



Utility Room/Outhouse

Plumbing for washing machine and tumble dryer, power and lighting.

Bedroom One

14' 0" x 11' 6" (4.27m x 3.51m)

Measurement into bay window. With double glazed bay window to the front elevation, radiator.

Bedroom Two

12' 0" x 11' 5" (3.66m x 3.48m)

Measurement into bay window. With double glazed bay window to the front elevation, radiator.

Nursery/Study

8' 0" x 4' 0" (2.44m x 1.22m)

With double glazed window to the rear elevation, radiator.

Shower Room

7' 11" x 5' 8" (2.41m x 1.73m)

With double glazed windows to the rear elevation, shower cubicle, wash hand basin, part tiled walls, tiled floor, radiator.

Front Garden

Attractive front garden with gravelled area, stepping stones, paved pathway.

Rear Garden

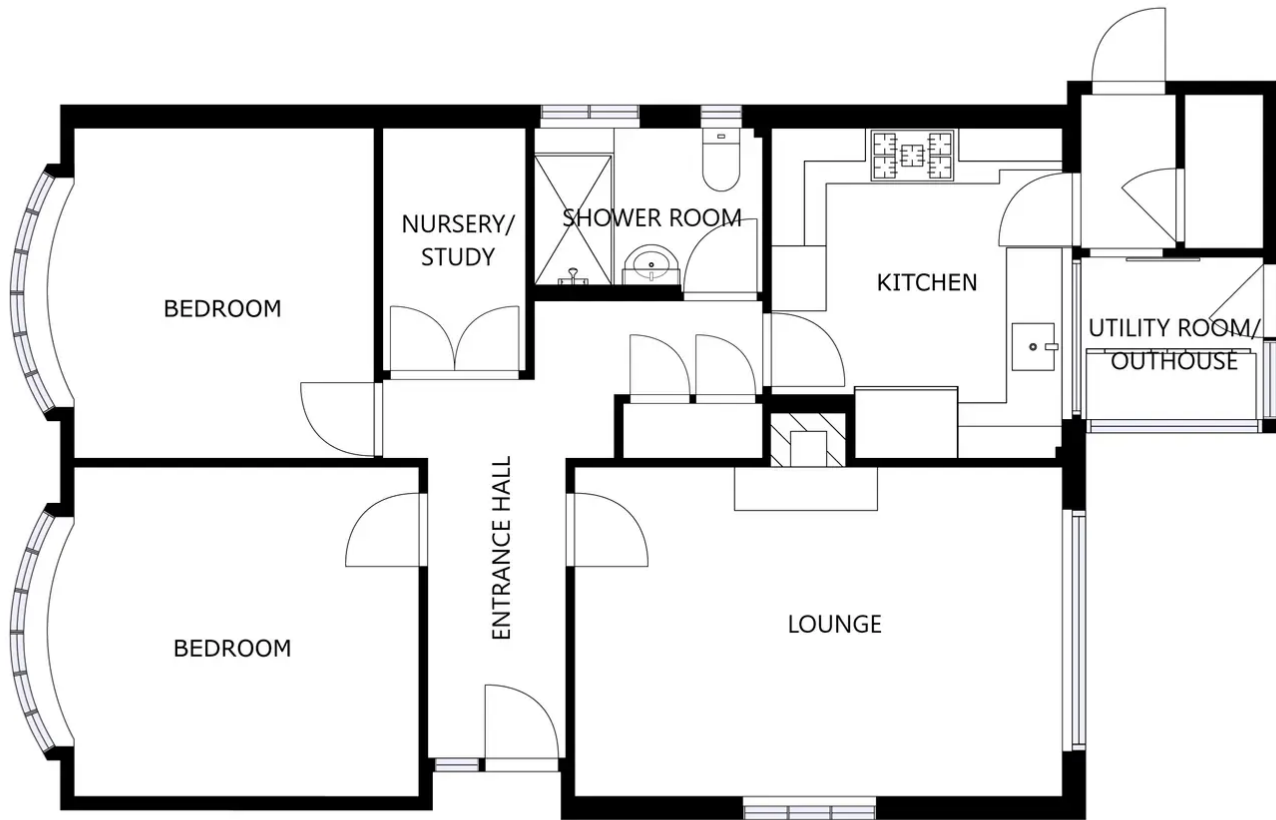
A large low maintenance rear garden with paved patio seating area, gravelled areas, paved pathways, flowerbeds, shed, greenhouse, plumbing for washer fountain, fencing to perimeter.

Parking

Paved driveway providing off road parking

Garage

With up and over door to the front elevation.



FLOOR 1

GROSS INTERNAL AREA
TOTAL: 82 m²
SIZES AND DIMENSIONS ARE APPROXIMATE, ACTUAL MAY VARY.



We'll keep you moving...



We must inform all prospective purchasers that the measurements are taken by an electronic tape and are provided as a guide only and they should not be used as accurate measurements. We have not tested any mains services, gas or electric appliances, or fixtures and fittings mentioned in these details, therefore, prospective purchasers should satisfy themselves before committing to purchase. Intending purchasers must satisfy themselves by inspection or otherwise to the correctness of the statements contained in these particulars. Knightsbridge Estate Agents & valuers (nor any person in their employment) has any authority to make any representation or warranty in relation to the property. The floor plans are not to scale, and are intended for use as a guide to the layout of the property only. They should not be used for any other purpose. Similarly, the plans are not designed to represent the actual décor found at the property in respect of flooring, wall coverings or fixtures and fittings.