



Cosby Road, Countesthorpe

In Excess of £560,000

A STUNNING NEW BUILD bungalow situated within a GENEROUS SIZE PLOT in a small secluded development with approximately 1,356 sq ft of accommodation.



0116 288 4888





Entrance Hall

With window and door to the front elevation, alarm panel, tiled floor, cloaks cupboard, double glazed door to rear garden, loft access.

Ground Floor WC

5' 5" x 2' 10" (1.65m x 0.86m)

With low-level WC, wash hand basin with storage below, tiled floor, oak door.

Sitting Room

16' 7" x 11' 10" (5.05m x 3.61m)

With double glazed French doors to the side elevation, double glazed window to the front elevation, TV point, oak door, sitting room provides the possibility to be used as a further bedroom).

Open Plan Living Fitted Kitchen Dining Room

With double glazed bi-fold doors to the rear elevation, two double glazed windows to the side elevation, built-in sink with a range of wall units with under unit lighting, base units with Quartz work surfaces over, centre island with base units and Quartz work surface over, built-in Bosche oven and microwave, induction hob with filter hood over, built-in fridge and freezer, built-in dishwasher, inset ceiling spotlights, tiled floor, splash back, TV point, oak door.





Utility Room

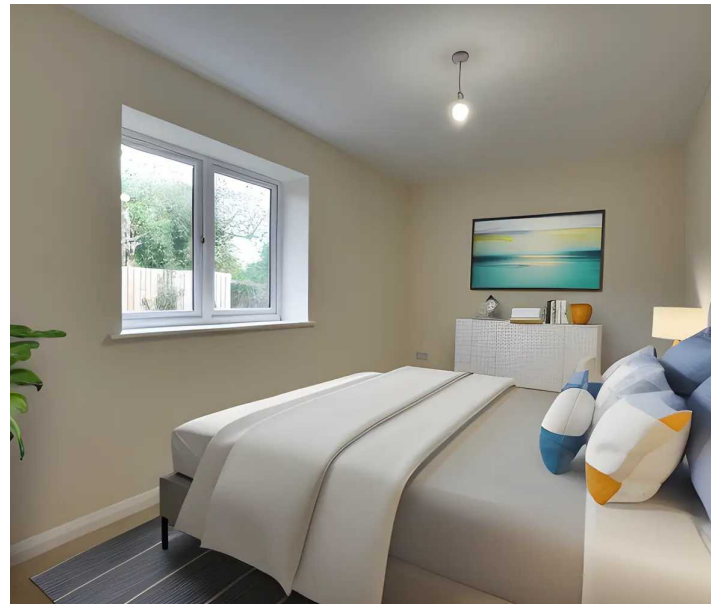
8' 3" x 6' 8" (2.51m x 2.03m)

With double glazed window to the rear elevation, stainless steel sink and drainer unit, base units with work surfaces over, plumbing for washing machine with freestanding washer dryer, extractor fan, wall mounted boiler, tiled floor, oak door.

Bedroom One

15' 1" x 10' 7" (4.60m x 3.23m)

With two double glazed windows to the side elevation, TV point, oak door.



En-Suite Shower Room

10' 6" x 5' 1" (3.20m x 1.55m)

With double glazed window to the rear elevation, walk-in double shower cubicle with overhead rain forest shower and handheld shower, low-level WC, wash hand basin with storage below, extractor fan, inset ceiling spotlights, heated chrome towel rail, tiled floor, part tiled walls, mirror, oak door.

Bedroom Two

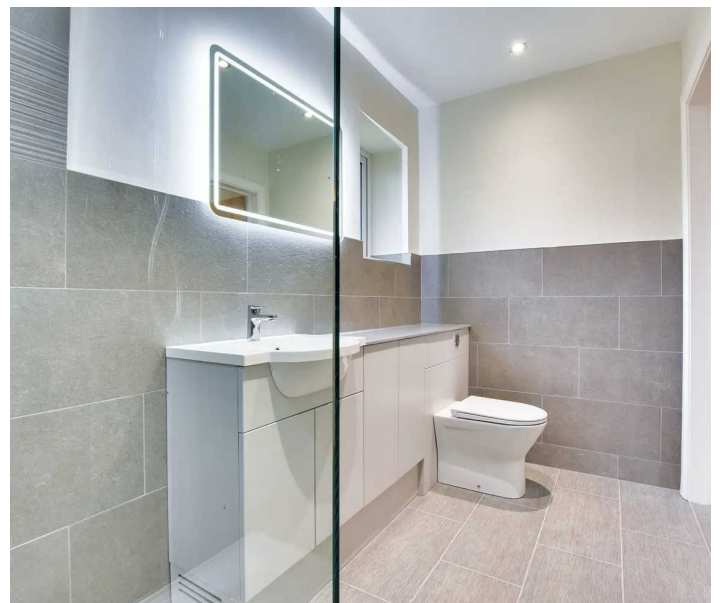
15' 3" x 8' 3" (4.65m x 2.51m)

With double glazed window to the rear elevation, TV point, oak door.

Bedroom Three

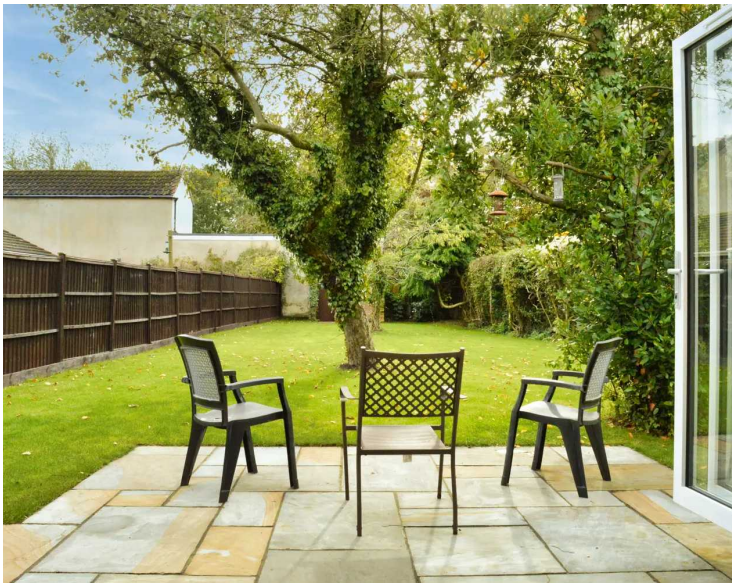
10' 3" x 8' 0" (3.12m x 2.44m)

With double glazed window to the front elevation, TV point, oak door.









Bathroom

8' 0" x 7' 1" (2.44m x 2.16m)

With double glazed window to the front elevation, bath with overhead rain forest shower and handheld shower, low-level WC, wash hand basin with storage below, inset ceiling spotlights, extractor fan, tiled floor, part tiled walls, heated chrome towel rail, mirror, oak door.

Rear Garden

The property benefits from front, side and rear gardens with lawn areas, mature trees, paved patio seating area, access to the kitchen diner and reception rooms, outside lighting, outside tap, brick store, fencing to perimeter.

Parking 2 vehicles

Tarmac driveway providing off road parking.

Garage 20' x 9'8"

With electric roll up door to the front elevation, power and lighting.



FLOOR 1

GROSS INTERNAL AREA
 FLOOR 1: 119 m²
 TOTAL: 125 m²
(DIMENSIONS AND VOLUMES ARE APPROXIMATE, ACTUAL MAY VARY)



You can include any text here. The text can be modified upon generating your brochure.

We'll keep you moving...





The property is ideally placed for popular local schooling including Greenfields Primary School and Countesthorpe Leysland Community College, and everyday amenities in Countesthorpe including Coop and Tesco Express. Regular bus routes are also available running to and from Leicester City Centre.

Council Tax band: E

Tenure: Freehold

EPC Energy Efficiency Rating: B

We'll keep you moving...



We must inform all prospective purchasers that the measurements are taken by an electronic take and are provided as a guide only and they should not be used as accurate measurements. We have not tested any mains services, gas or electric appliances, or fixtures and fittings mentioned in these details, therefore, prospective purchasers should satisfy themselves before committing to purchase. Intending purchasers must satisfy themselves by inspection or otherwise to the correctness of the statements contained in these particulars. Knightsbridge Estate Agents (nor any person in their employment) has any authority to make any representation or warranty in relation to the property. The floor plans are not to scale, and are intended for use as a guide to the layout of the property only. They should not be used for any other purpose. We are required by law to conduct anti-money laundering checks on all those selling or buying a property. Whilst we retain responsibility for ensuring checks and any ongoing monitoring are carried out correctly, the initial checks are carried out on our behalf by Lifetime Legal who will contact you once you have agreed to instruct us in your sale or had an offer accepted on a property you wish to buy. The cost of these checks is £60 (incl. VAT), which covers the cost of obtaining relevant data and any manual checks and monitoring which might be required. This fee will need to be paid by you in advance of us publishing your property (in the case of a vendor) or issuing a memorandum of sale (in the case of a buyer), directly to Lifetime Legal, and is non-refundable. We will receive some of the fee taken by Lifetime Legal to compensate for its role in the provision of these checks.