

Wheatsheaf Court, Knighton Fields

£230,000

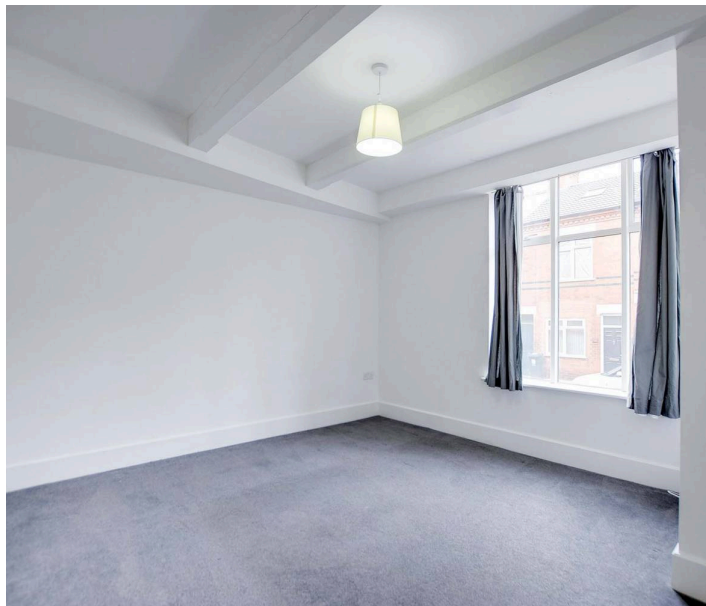
Spacious FOUR-BEDROOM townhouse in Wheatsheaf Works with character features, two bathrooms, parking, private garden, access to a communal decked area. No upward chain. Ideal family or investment home.



Knightsbridge
Estate Agents

0116 274 5544





Entrance Lobby

With radiator and internal door to the entrance hall.

Entrance Hall

With stairs to the first floor landing and a radiator.

Sitting Room

13' 3" x 11' 4" (4.04m x 3.45m)

With a double-glazed window to the front elevation and a radiator.

Bedroom

13' 0" x 9' 0" (3.96m x 2.74m)

With fitted sliding mirrored wardrobes and a radiator.

Shower Room

6' 8" x 7' 0" (2.03m x 2.13m)

With a tiled shower cubicle, wash hand basin, WC, spotlights, tiled flooring, airing cupboard, extractor fan and a heated chrome towel rail.



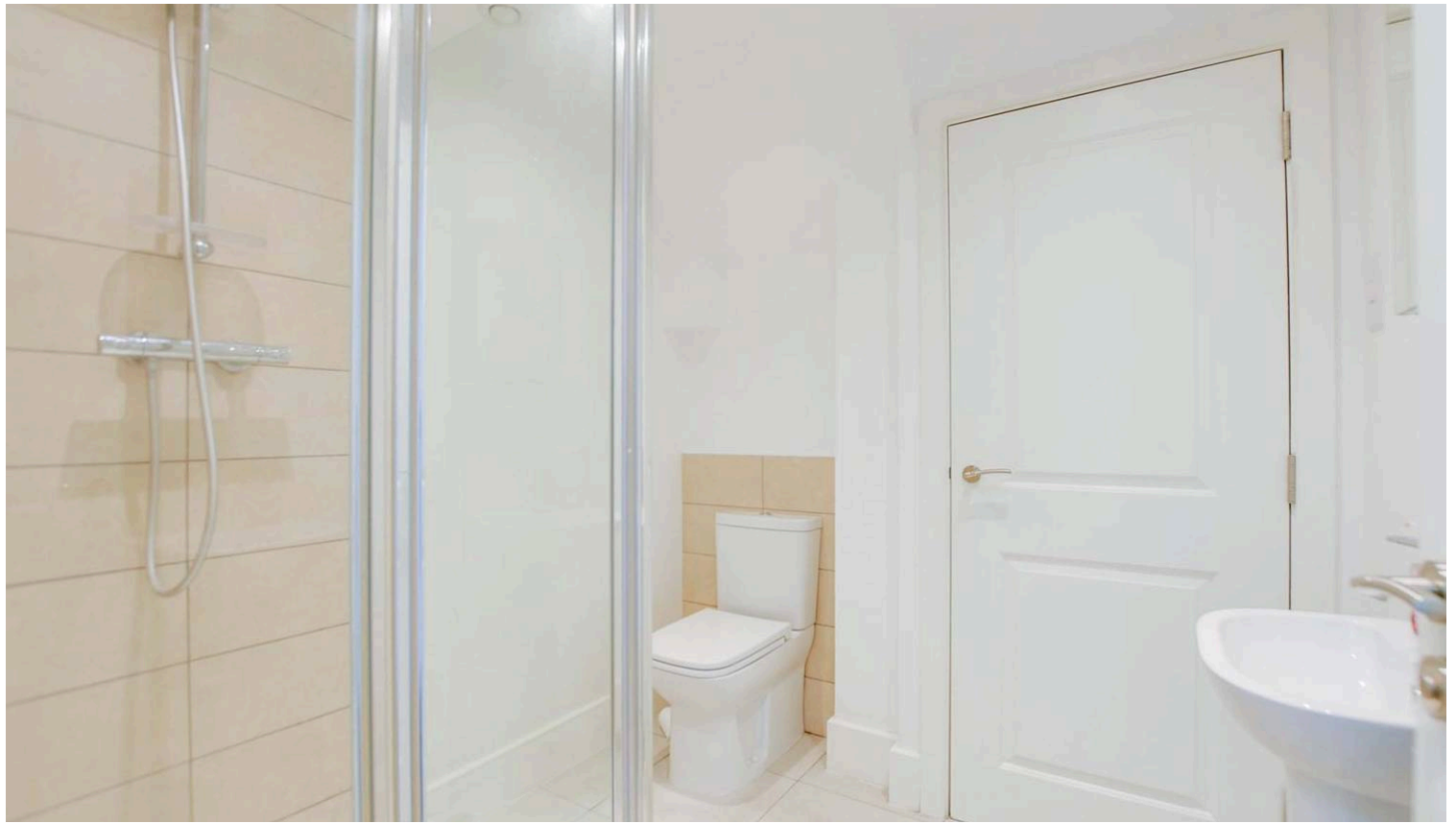
First Floor Landing

With a radiator and a door to the rear garden.

Open Plan Living Kitchen Dining Room

15' 10" x 13' 3" (4.83m x 4.04m)

With a feature tall double-glazed window to the front elevation, exposed brick surround, high ceilings, with original beams, a sink and drainer unit with a range of wall and base units with work surfaces over, fridge freezer, dishwasher, electric hob, chimney hood, and radiator.



Bedroom Four

9' 3" x 8' 10" (2.82m x 2.69m)

With a double-glazed window to the rear elevation, high ceiling with original beams and a radiator.

Second Floor Landing

With a radiator.

Bedroom One

13' 7" x 9' 4" (4.14m x 2.84m)

With a double-glazed window to the front elevation and a radiator.

Bedroom Two

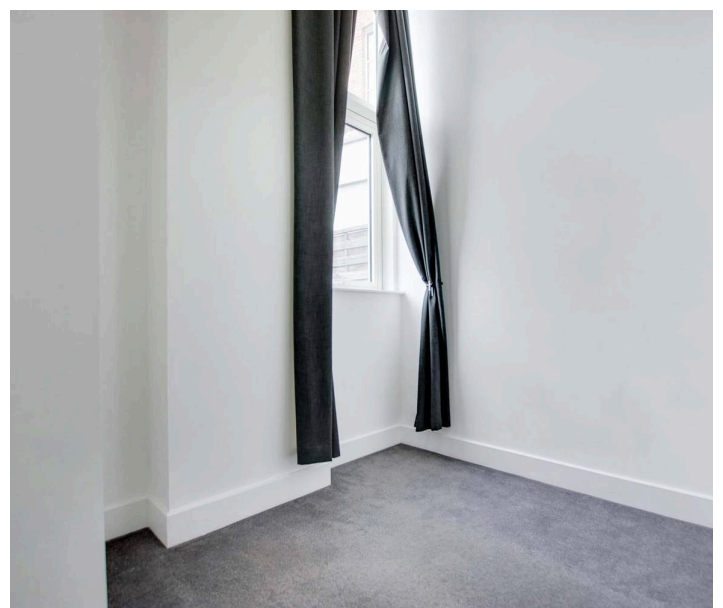
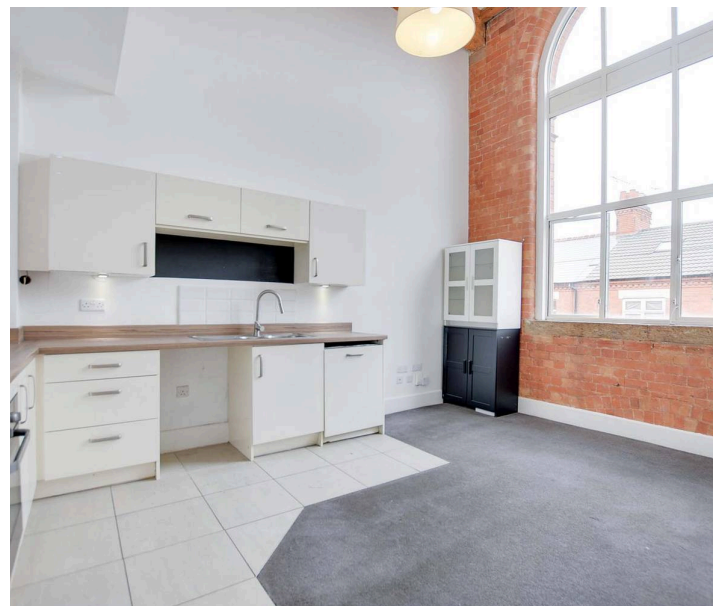
13' 8" x 8' 4" (4.17m x 2.54m)

With a double-glazed window to the rear elevation and a radiator.

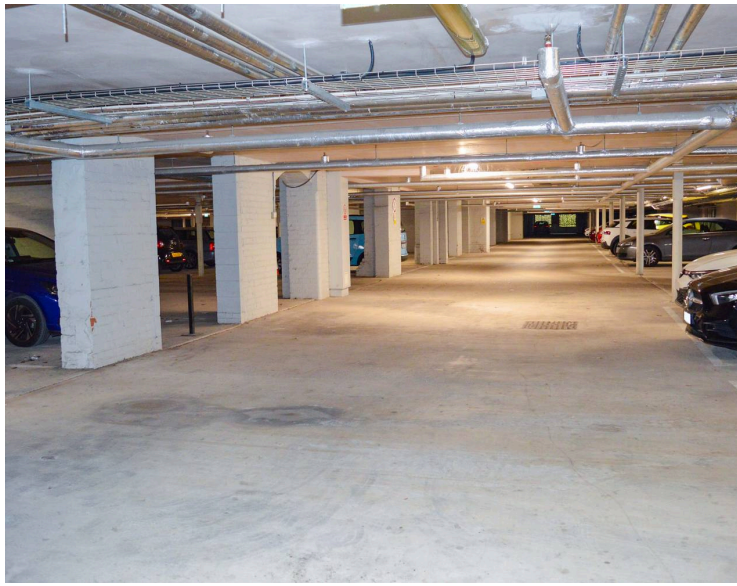
Family Bathroom

7' 10" x 5' 10" (2.39m x 1.78m)

With a bath with a shower over, WC, wash hand basin, ceiling spotlights, heated chrome towel rail and a tiled flooring.







Rear Garden

An astro-turfed rear garden with gated access leading to:

Communal Garden

A communal garden.

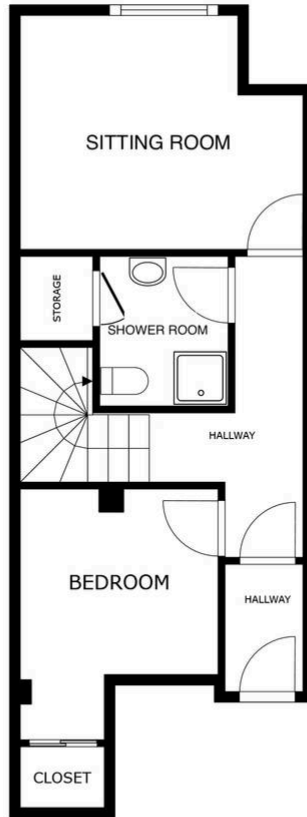
Parking - Allocated parking for two vehicles.

Lease Information:

Year Remaining on the Lease: 115 Years

Service Charge: £218.55 PCM

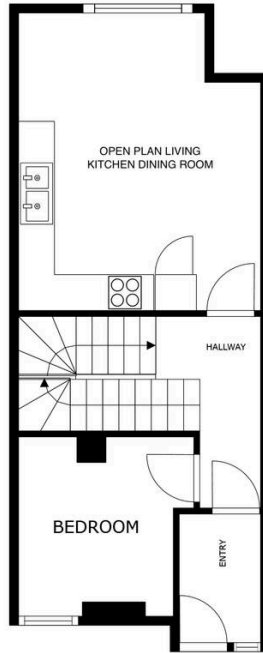
Ground Rent: £350 Per Year



FLOOR 1

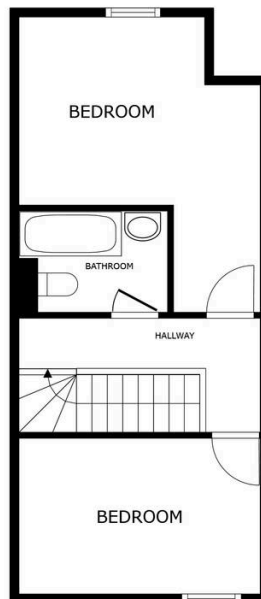
SIZES AND DIMENSIONS ARE APPROXIMATE, ACTUAL MAY VARY.





FLOOR 2

SIZES AND DIMENSIONS ARE APPROXIMATE, ACTUAL MAY VARY.



FLOOR 3

SIZES AND DIMENSIONS ARE APPROXIMATE, ACTUAL MAY VARY.





The property is well located for everyday amenities and services including renowned local, public and private schooling, nursery day-care, Leicester City Centre and the University of Leicester, Leicester Royal Infirmary and Leicester General Hospital. The property is also within easy reach of amenities along Welford Road and Queens Road shopping parade in neighbouring Clarendon Park, with its specialist shops, bars, boutiques and restaurants.

Council Tax band: B

Tenure: Leasehold

EPC Energy Efficiency Rating: D

EPC Environmental Impact Rating: D

We'll keep you moving...



We must inform all prospective purchasers that the measurements are taken by an electronic take and are provided as a guide only and they should not be used as accurate measurements. We have not tested any mains services, gas or electric appliances, or fixtures and fittings mentioned in these details, therefore, prospective purchasers should satisfy themselves before committing to purchase. Intending purchasers must satisfy themselves by inspection or otherwise to the correctness of the statements contained in these particulars. Knightsbridge Estate Agents (nor any person in their employment) has any authority to make any representation or warranty in relation to the property. The floor plans are not to scale, and are intended for use as a guide to the layout of the property only. They should not be used for any other purpose. We are required by law to conduct anti-money laundering checks on all those selling or buying a property. Whilst we retain responsibility for ensuring checks and any ongoing monitoring are carried out correctly, the initial checks are carried out on our behalf by Lifetime Legal who will contact you once you have agreed to instruct us in your sale or had an offer accepted on a property you wish to buy. The cost of these checks is £60 (incl. VAT), which covers the cost of obtaining relevant data and any manual checks and monitoring which might be required. This fee will need to be paid by you in advance of us publishing your property (in the case of a vendor) or issuing a memorandum of sale (in the case of a buyer), directly to Lifetime Legal, and is non-refundable. We will receive some of the fee taken by Lifetime Legal to compensate for its role in the provision of these checks.