

Victoria Flats Albert Road, Leicester

£120,000

Well-presented 2 bed first floor apartment with no upward chain, spacious lounge, fitted kitchen, parking, communal grounds, and great transport links. Ideal for first-time buyers or investors.

Council Tax band: A

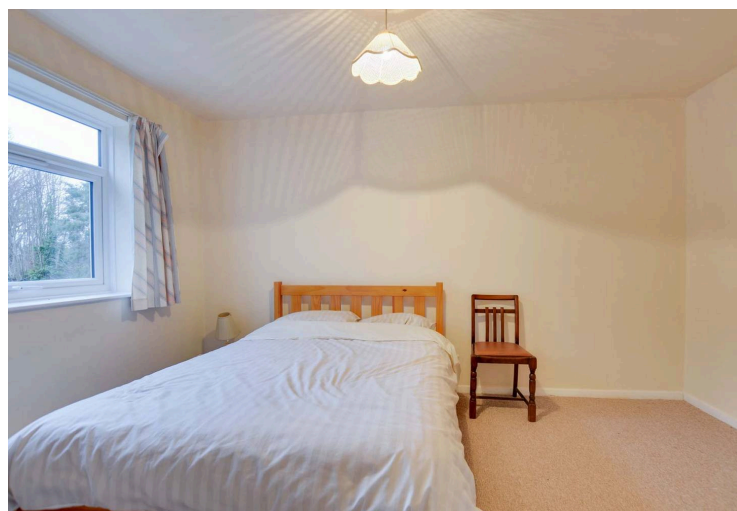
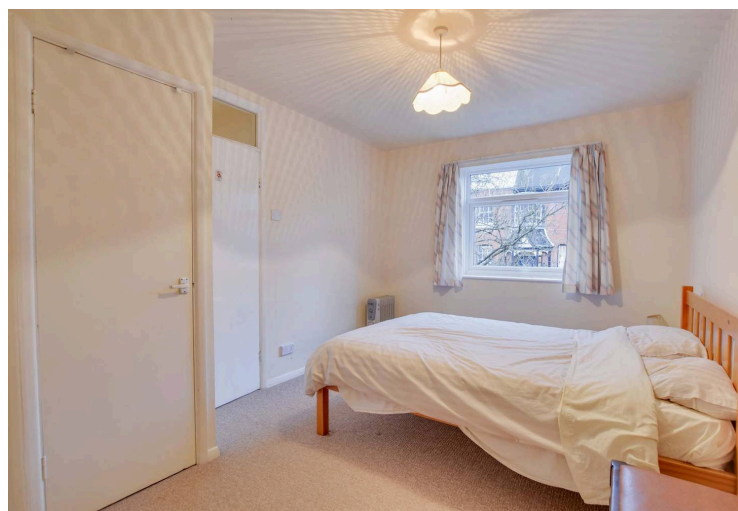
Tenure: Leasehold

EPC Energy Efficiency Rating: D



0116 274 5544





Lounge/Dining Room

14' 4" x 9' 9" (4.38m x 2.97m)

A bright and welcoming reception room, offering an excellent space for both relaxing and dining. It features a double-glazed window overlooking the front elevation, ensuring plenty of natural light.

Kitchen

9' 8" x 5' 10" (2.94m x 1.77m)

Equipped with a stainless steel sink and drainer unit, complemented by a range of wall and base units with work surfaces over. The kitchen includes an electric cooker point and a space for a fridge. A double-glazed window faces the front elevation. Please note: This room will require updating.



Bedroom One

13' 7" x 9' 6" (4.15m x 2.90m)

A generous double bedroom , boasting a built-in wardrobe and an airing cupboard for storage. The room benefits from a double-glazed window to the front elevation.

Bedroom Two

7' 10" x 5' 10" (2.40m x 1.79m)

A single bedroom with a double-glazed window overlooking the front elevation.

Bathroom

7' 10" x 4' 3" (2.40m x 1.30m)

Fitted with a bath and an electric shower over. It includes a wash hand basin, a low-level WC, and an extractor fan. An electric wall heater is also present.

Communal Garden

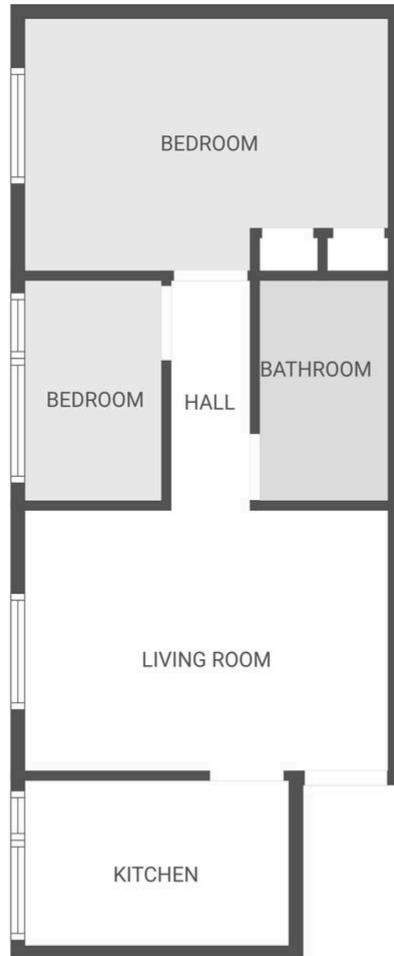
Communal gardens with flower beds and mature trees

Lease Information:

Lease Length Remaining: 78 Years

Service Charge: £600-£700 every 6 months

Ground Rent: £75 per year.



FLOOR PLAN CREATED BY CUBICASA APP. MEASUREMENTS DEEMED HIGHLY RELIABLE BUT NOT GUARANTEED.

We'll keep you moving...



We must inform all prospective purchasers that the measurements are taken by an electronic tape and are provided as a guide only and they should not be used as accurate measurements. We have not tested any mains services, gas or electric appliances, or fixtures and fittings mentioned in these details, therefore, prospective purchasers should satisfy themselves before committing to purchase. Intending purchasers must satisfy themselves by inspection or otherwise to the correctness of the statements contained in these particulars. Knightsbridge Estate Agents & valuers (nor any person in their employment) has any authority to make any representation or warranty in relation to the property.' The floor plans are not to scale, and are intended for use as a guide to the layout of the property only. They should not be used for any other purpose. Similarly, the plans are not designed to represent the actual décor found at the property in respect of flooring, wall coverings or fixtures and fittings.