

Knighton Court Knighton Park Road

£175,000 Leasehold

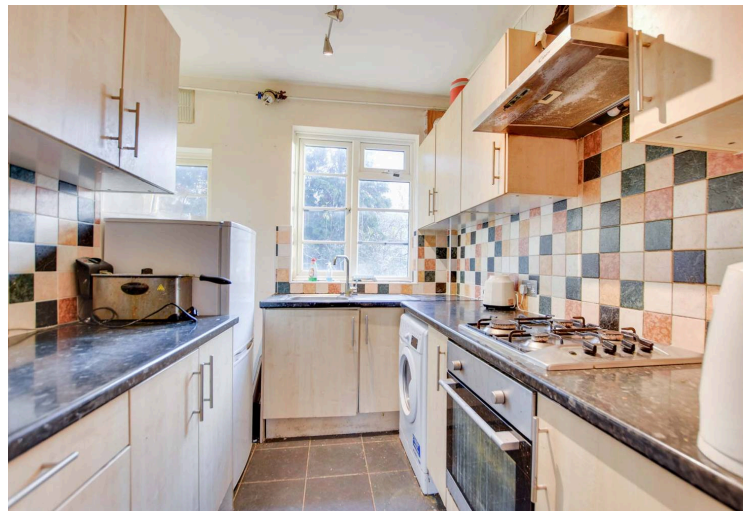
Located within a popular period development is this FIRST FLOOR flat requiring some updating. The property includes a generously sized sitting room with access to a balcony and TWO DOUBLE BEDROOMS.

Council Tax band: B

Tenure: Leasehold

EPC Energy Efficiency Rating: C





Communal Entrance

With stairs to first floor.

Private Entrance Hall

With storage cupboard, radiator.

Sitting Room

16' 9" x 12' 10" (5.10m x 3.90m)

With double glazed window to the front elevation, double glazed door to balcony, fireplace with surround, picture rail, wall lighting, radiator.



Kitchen

9' 2" x 8' 10" (2.80m x 2.70m)

Measurement narrowing to 2.65m. With two double glazed windows to the rear elevation, sink and drainer unit with a range of wall and base units with work surface over, built-in oven and gas hob with chimney hood over, plumbing for washing machine, space for fridge freezer, tiled floor, part tiled walls.

Bedroom One

12' 5" x 11' 4" (3.79m x 3.46m)

With double glazed window to the front elevation, fitted wardrobes, radiator.

Bedroom Two

11' 5" x 11' 3" (3.49m x 3.42m)

With double glazed window to the rear elevation, radiator.

Bathroom

8' 8" x 6' 6" (2.65m x 1.97m)

With double glazed window to the rear elevation, bath with mixer tap shower attachment, pedestal wash hand basin, low-level WC, part tiled walls, tiled floor, heated towel rail.

Communal Garden

Well maintained communal gardens.



FLOOR PLAN CREATED BY CUBICASA APP. MEASUREMENTS DEEMED HIGHLY RELIABLE BUT NOT GUARANTEED.

We'll keep you moving...



We must inform all prospective purchasers that the measurements are taken by an electronic tape and are provided as a guide only and they should not be used as accurate measurements. We have not tested any mains services, gas or electric appliances, or fixtures and fittings mentioned in these details, therefore, prospective purchasers should satisfy themselves before committing to purchase. Intending purchasers must satisfy themselves by inspection or otherwise to the correctness of the statements contained in these particulars. Knightsbridge Estate Agents & valuers (nor any person in their employment) has any authority to make any representation or warranty in relation to the property. The floor plans are not to scale, and are intended for use as a guide to the layout of the property only. They should not be used for any other purpose. Similarly, the plans are not designed to represent the actual décor found at the property in respect of flooring, wall coverings or fixtures and fittings.